

Floor Plans

These floor plans have been assembled as a resource for you. They may not be inclusive of every home in the community.

Please note that over time, owners may make modifications to spaces that may not be captured in these original floor plans.

Renderings are not a guarantee of space measurement. Interested parties should verify through their own secured services.

WELLINGTON PLACE II

NOTTINGHAM COVE

WESTCHESTER

KENSINGTON HIGH ST

WELLINGTON PLACE

SHEFFIELD VILLAS

LES HIGH INDEPENDENCE

GARDENS BLVD

KENSINGTON HIGH ST

CANTERBURY GREEN

HAMPTON ROW

CANTERBURY GREEN PARK

KENSINGTON GARDENS

ASHLEY GROVE TRACT

SHEFFIELD VILLAS

KNIGHTS BRIDGE

THE HAMLET
LANCASTER SQUARE II

KENSINGTON HIGH ST

KENSINGTON HIGH ST

LES HIGH INDEPENDENCE

KENSINGTON HIGH ST

KENSINGTON HIGH ST

LANCASTER SQUARE III

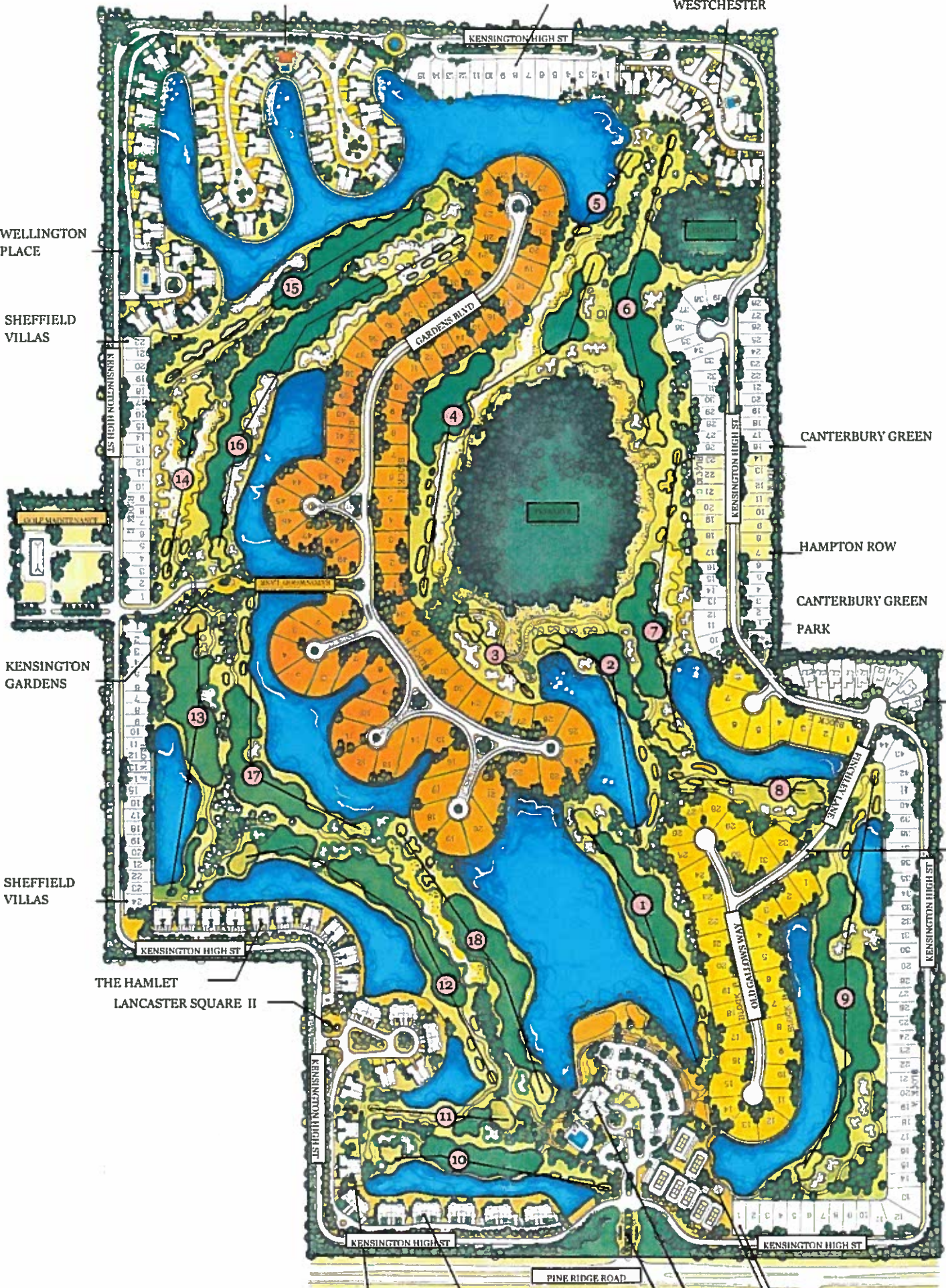
LANCASTER SQUARE I
GUARDHOUSE

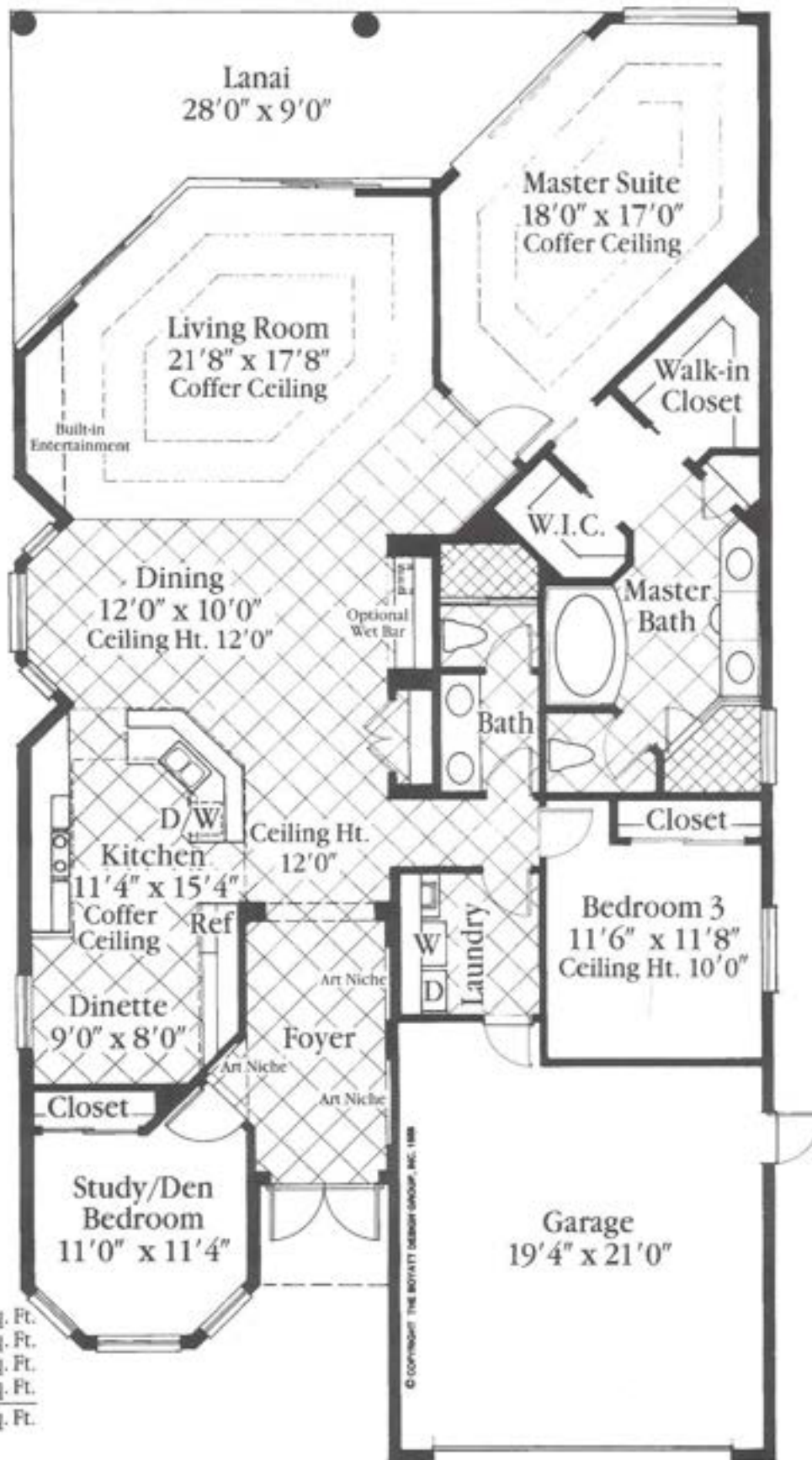
YORKTOWN

CLUBHOUSE

FITNESS CENTER

PINE RIDGE ROAD





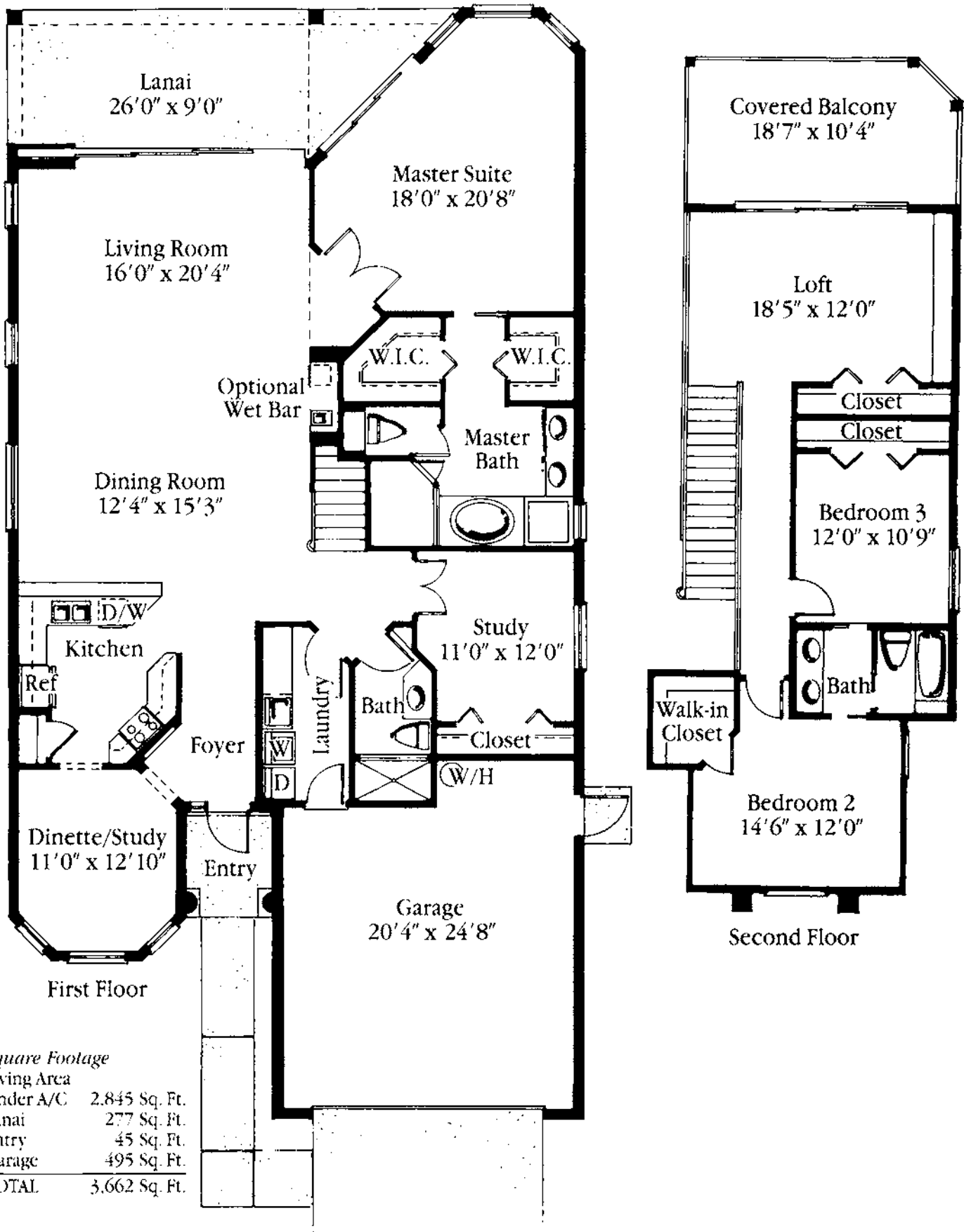
Square Footage

Living Area	
Under A/C	2,204 Sq. Ft.
Lanai	289 Sq. Ft.
Entry	35 Sq. Ft.
Garage	463 Sq. Ft.
TOTAL	2,991 Sq. Ft.

Kensington Golf & Country Club
 2700 Pine Ridge Road (one mile east of Airport Road), Naples, Florida 34109.
 Phone (941) 649-5699 or 1-800-216-1845.

All dimensions and specifications are approximate and subject to change without notice. Square footage is based on exterior wall dimensions. Seller reserves the right to make changes in the materials, appliances, or equipment. Any substituted materials, appliances, or equipment shall be of equivalent or better quality. Some restrictions on exterior color selections may apply. Illustrations are an artist's rendering.





Square Footage

Living Area	
Under A/C	2,845 Sq. Ft.
Lanai	277 Sq. Ft.
Entry	45 Sq. Ft.
Garage	495 Sq. Ft.
TOTAL	3,662 Sq. Ft.

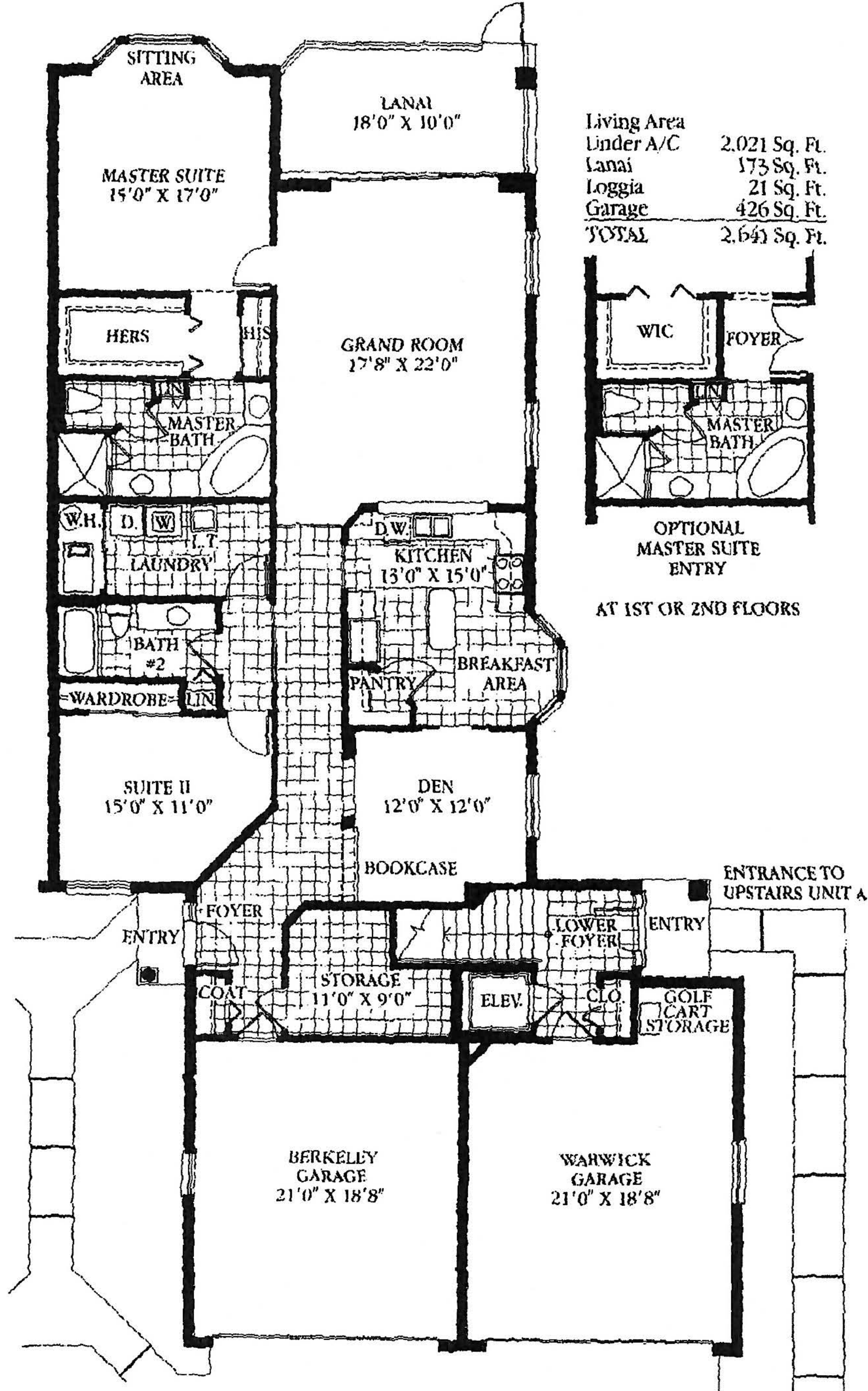
Kensington Golf & Country Club
 2700 Pine Ridge Road (one mile east of Airport Road), Naples, Florida 34109.
 Phone (941) 649-5699 or 1-800-216-1845.

All dimensions and specifications are approximate and subject to change without notice. Square footage is based on exterior wall dimensions. Seller reserves the right to make changes in the materials, appliances, or equipment. Any substituted materials, appliances, or equipment shall be of equivalent or better quality. Some restrictions on exterior color selections may apply. Illustrations are an artist's rendering.



The Berkeley

Two Bedrooms, Two Baths Plus Den



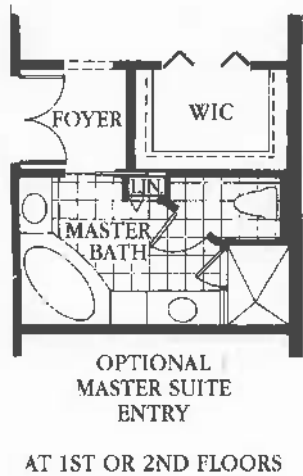
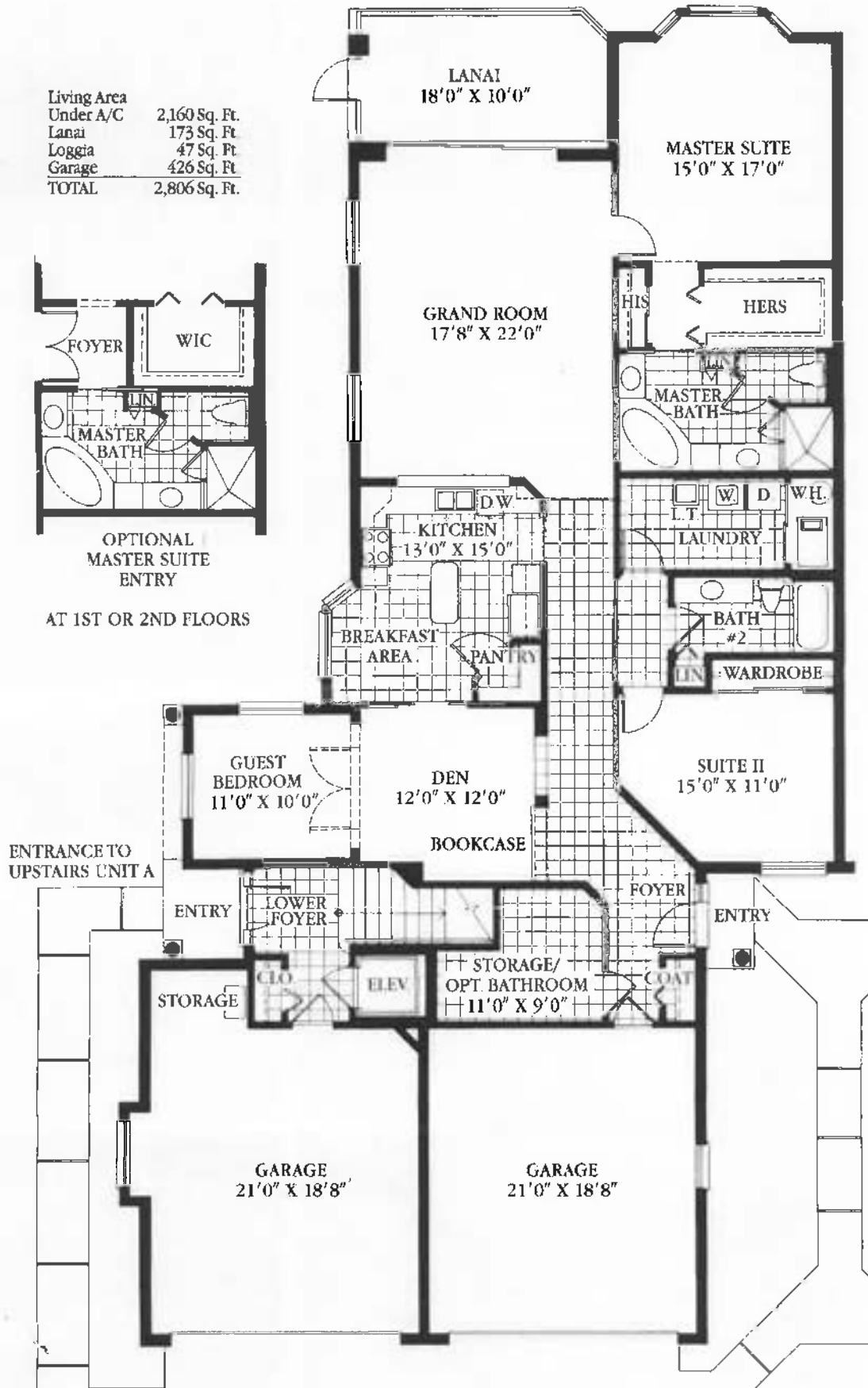
All dimensions and specifications are approximate, and are subject to change without notice. Final plans are subject to revisions as deemed advisable by the developer, architects and engineers, or as required by law.



Berkeley

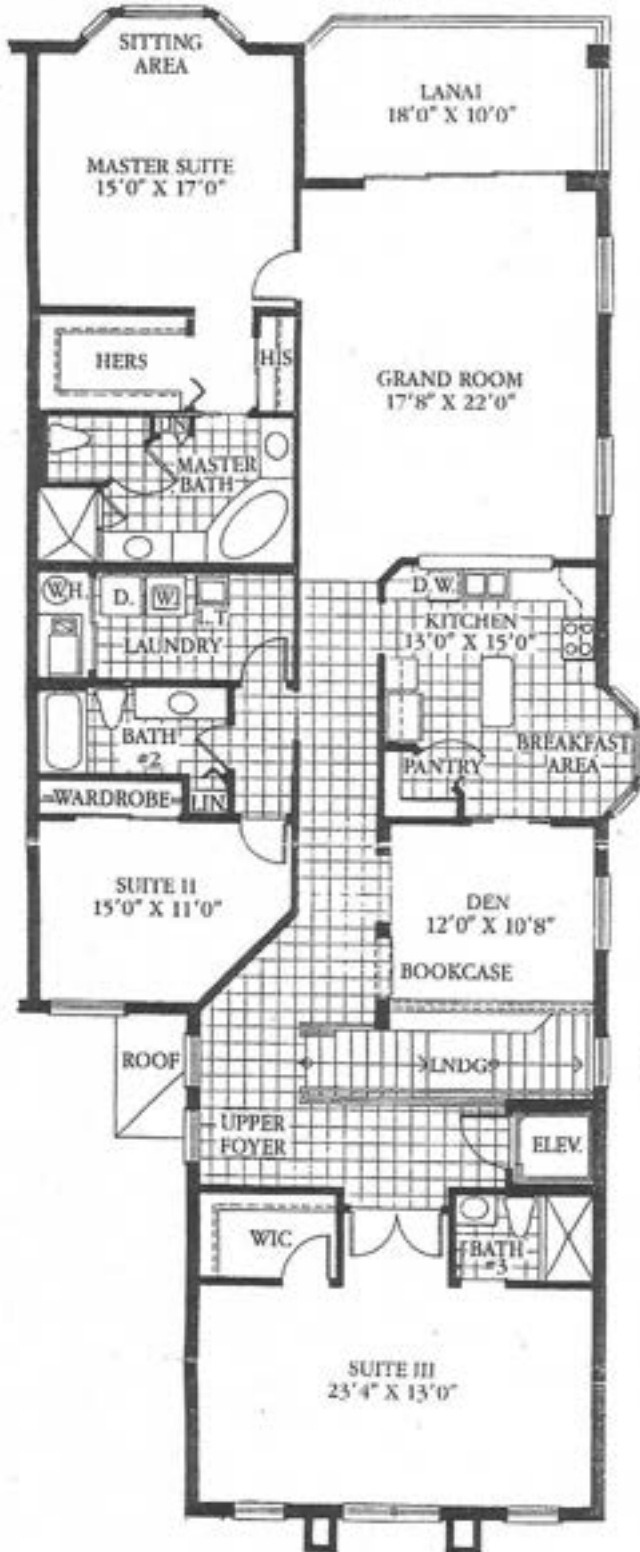
Two Bedrooms, Two Baths, Den Plus Bonus Room/Suite Three

Living Area	2,160 Sq. Ft.
Under A/C	173 Sq. Ft.
Lanai	47 Sq. Ft.
Garage	426 Sq. Ft.
TOTAL	2,806 Sq. Ft.

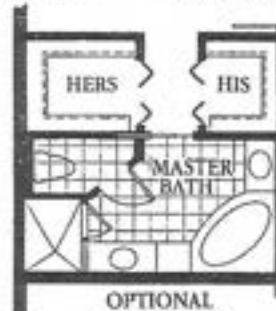


The Warwick

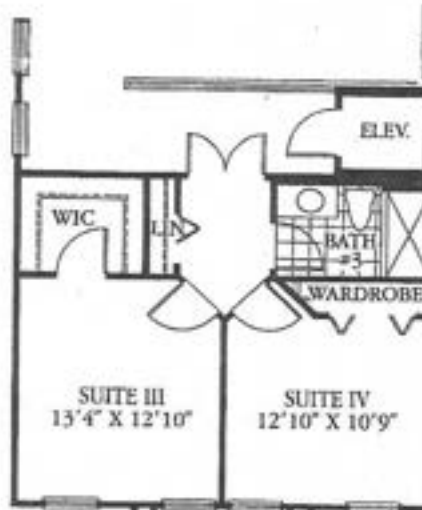
Three Bedrooms, Three Baths Plus Den



Living Area	
Under A/C	2,686 Sq. Ft.
Lanai	173 Sq. Ft.
Loggia	33 Sq. Ft.
Garage	463 Sq. Ft.
TOTAL	3,355 Sq. Ft.



OPTIONAL HIS/HERS WIC AT 1ST OR 2ND FLOORS

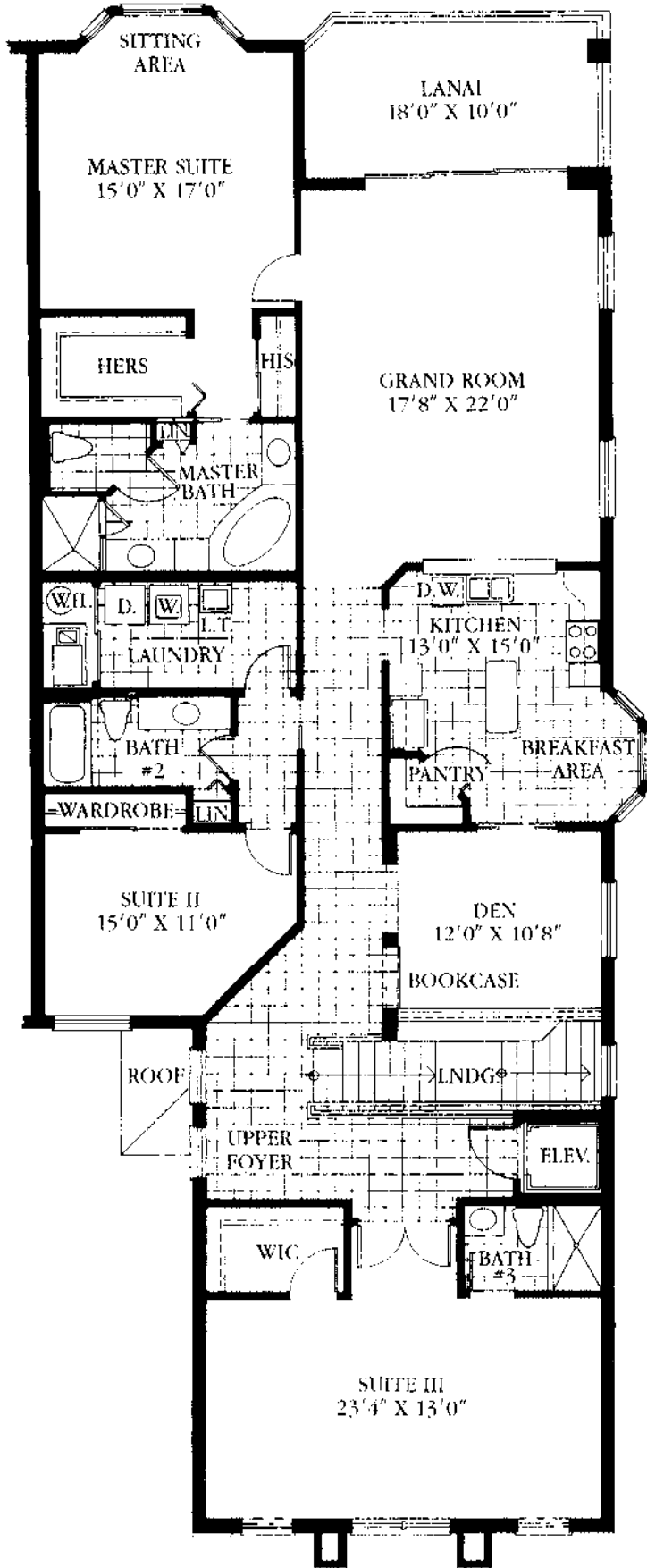


THE WARWICK IV (OPTION)
FOUR BEDROOMS, THREE BATHS PLUS DEN

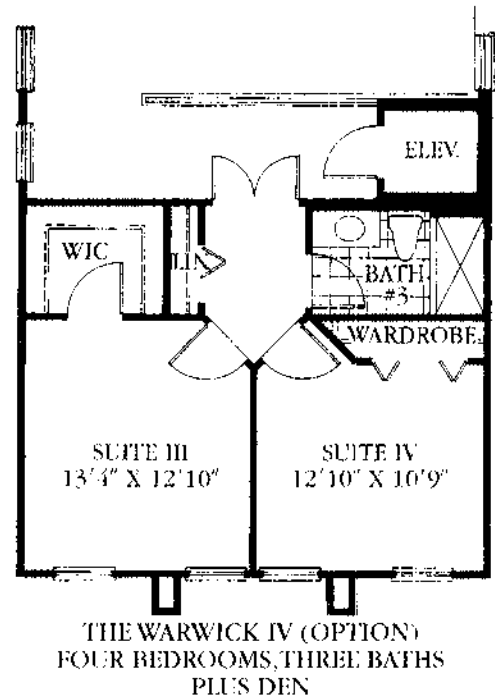
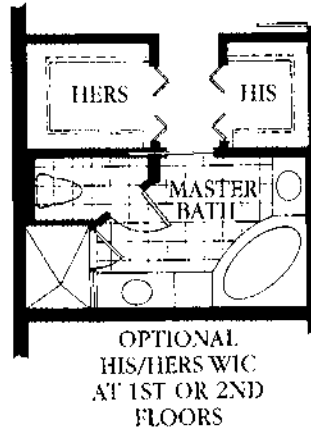
All dimensions and specifications are approximate, and are subject to change without notice. Final plans are subject to revisions as deemed advisable by the developer, architects and engineers, or as required by law.

The Warwick

Three Bedrooms, Three Baths Plus Den

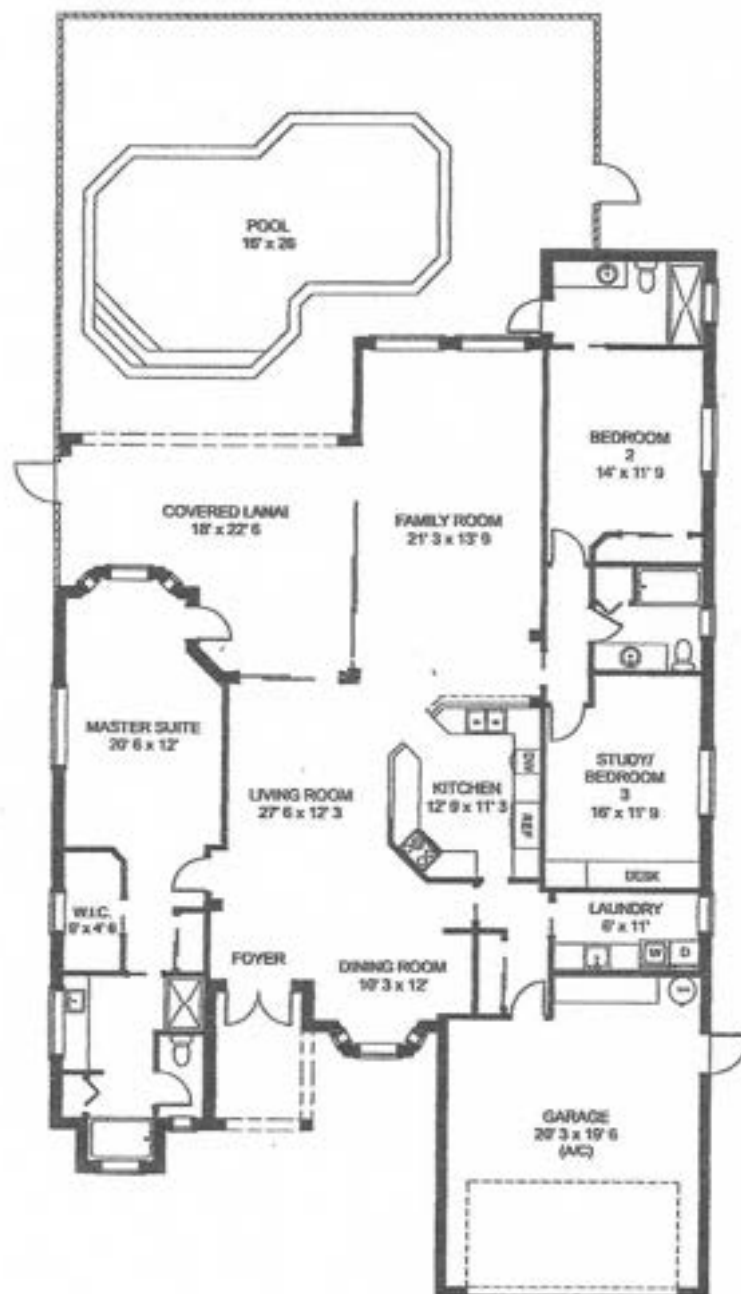


Living Area	
Under A/C	2,686 Sq. Ft.
Lanai	173 Sq. Ft.
Loggia	33 Sq. Ft.
Garage	463 Sq. Ft.
TOTAL	3,355 Sq. Ft.



All dimensions and specifications are approximate, and are subject to change without notice. Final plans are subject to revisions as deemed advisable by the developer, architects and engineers, or as required by law.

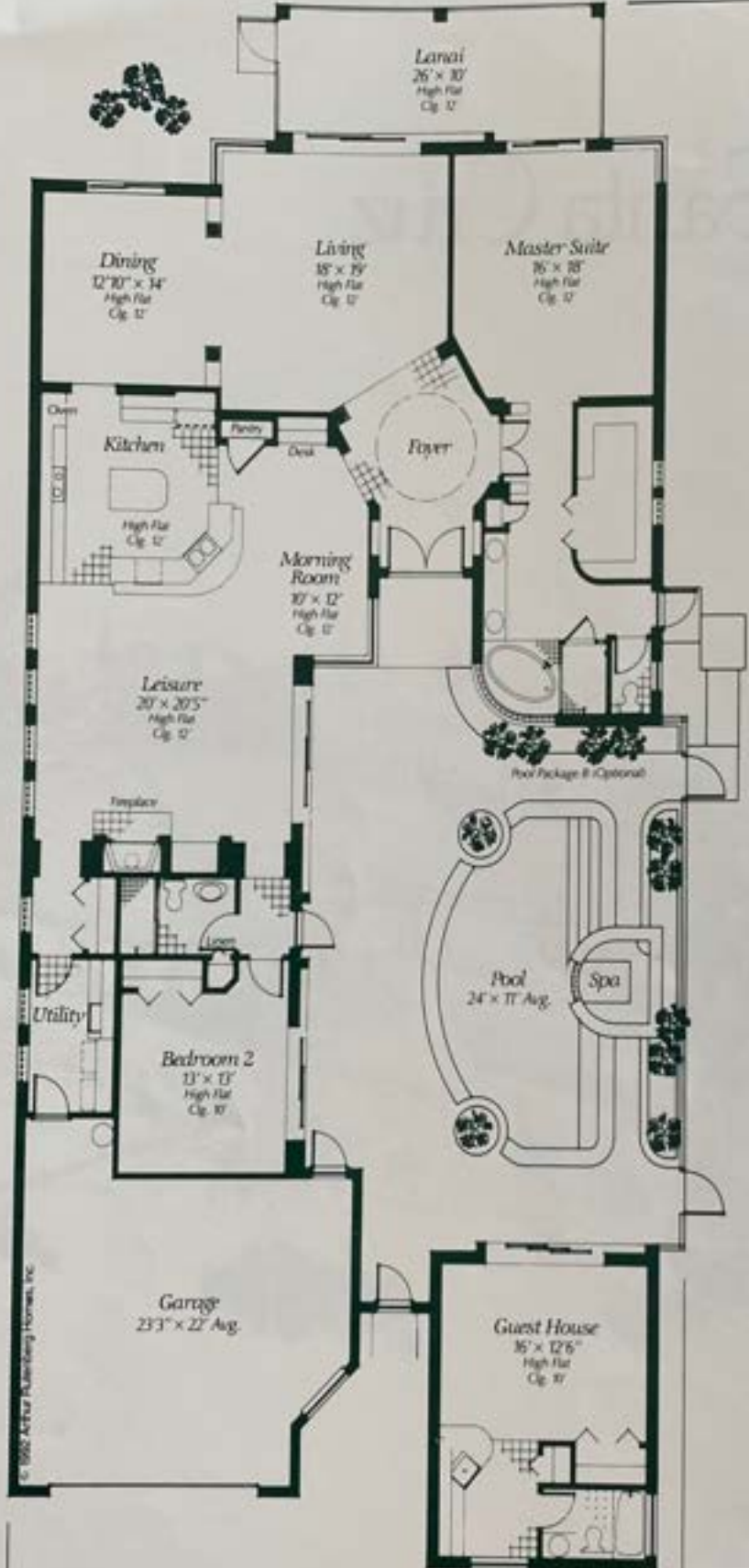




TOTAL UNDER AIR	2274 sq. ft.
Garage (A/C)	471 sq. ft.
Covered Entry	69 sq. ft.
Covered Lanai	1145 sq. ft.

TOTAL UNDER ROOF	3235 sq. ft.
Lanai/ Pool	1145 sq. ft.

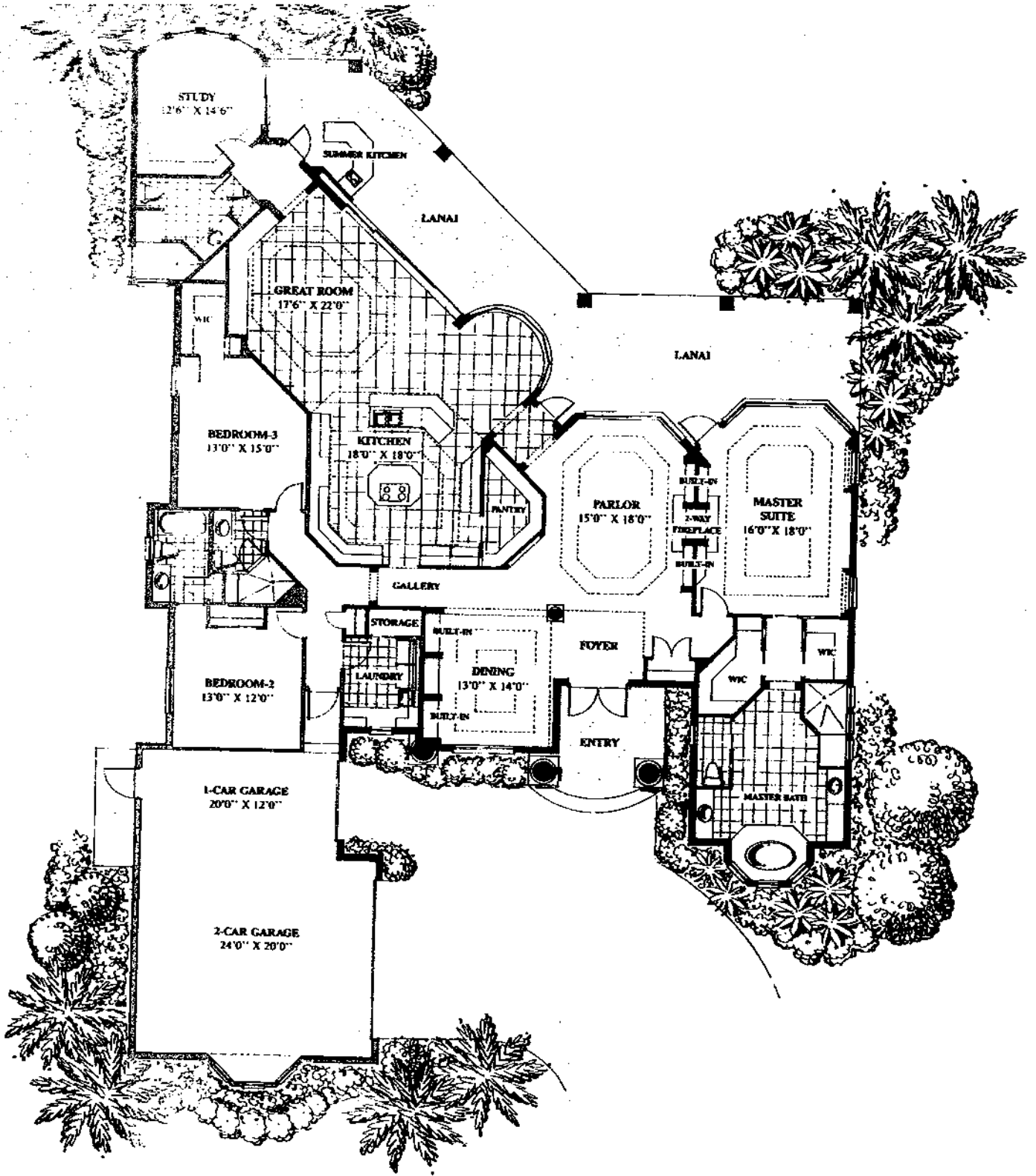
TOTAL AREA	4280 sq. ft.
------------	--------------

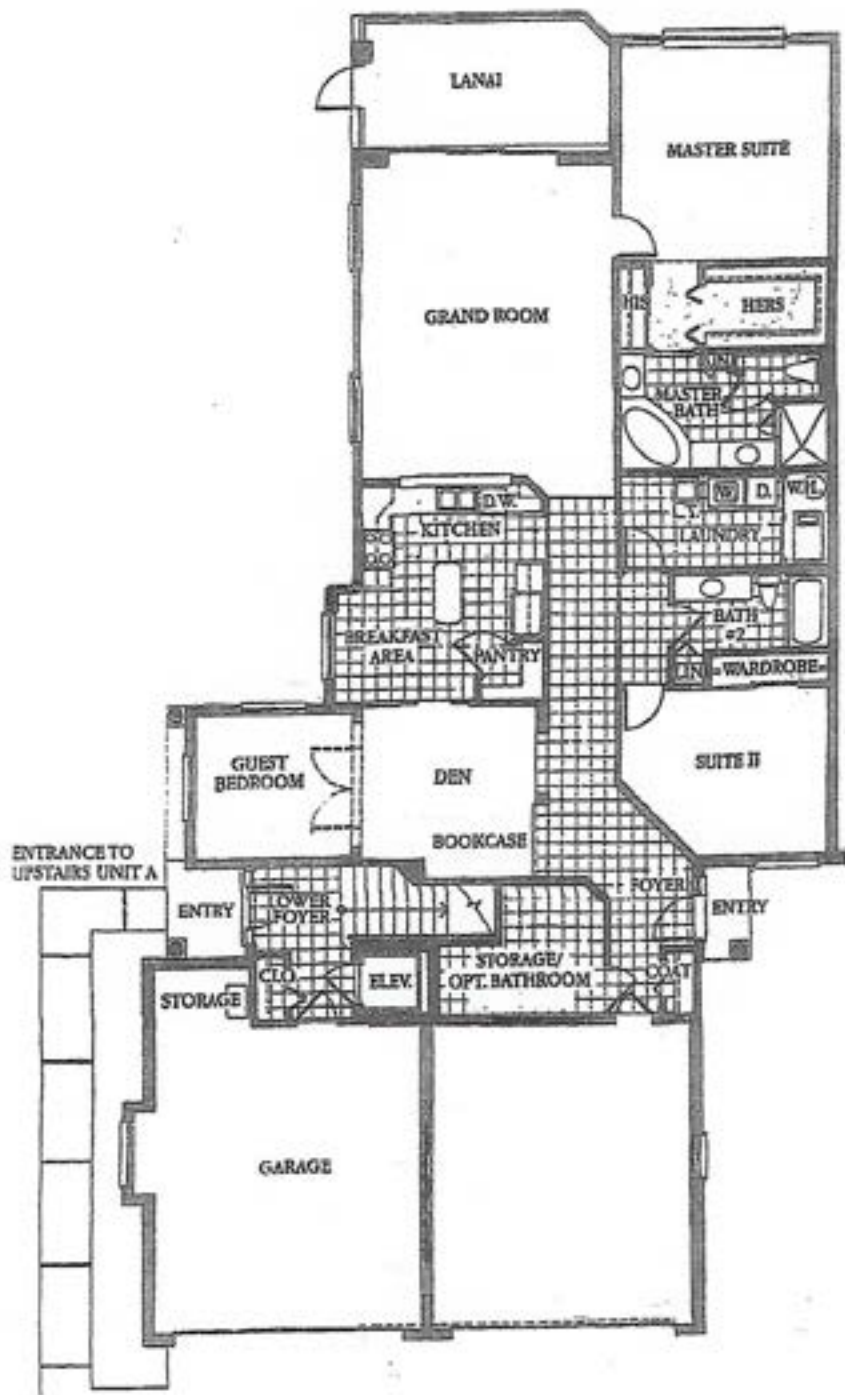


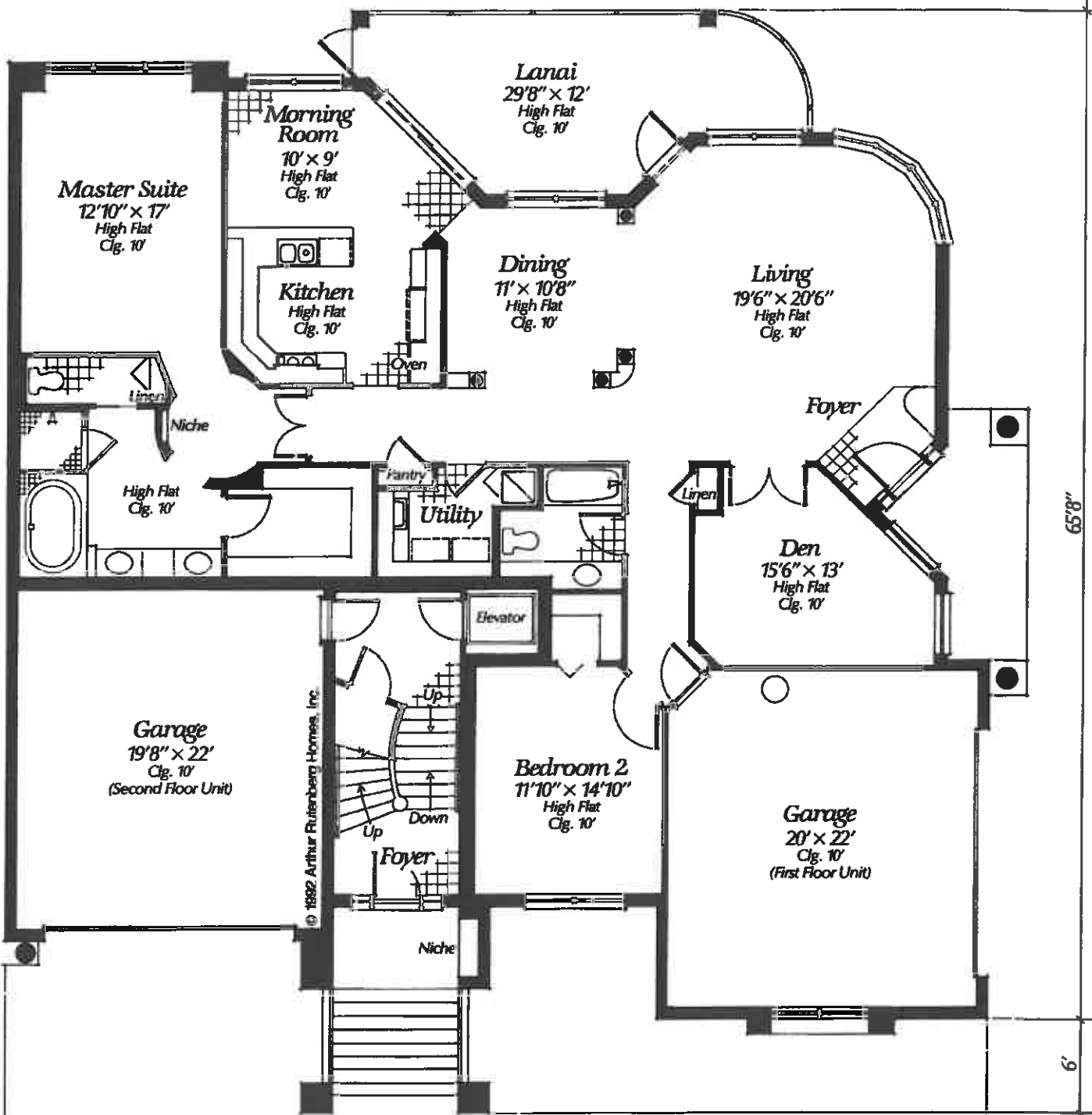
Plans and specifications subject to change without notice.

Santa Cruz
3,071 square feet

Arthur Rutenberg Homes reserves the right to make modifications to floor plans, materials and specifications without notice. The floorplans, illustrations and photography in this Design Collection are conceptual only. Dimensions are approximate. For a more accurate floor plan, reference should be made to the Product Manual.







© 1992 Arthur Rutenberg Homes, Inc.

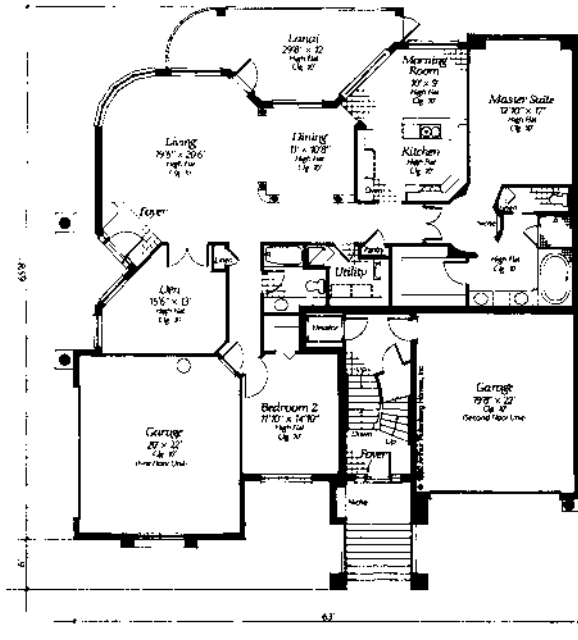
63'

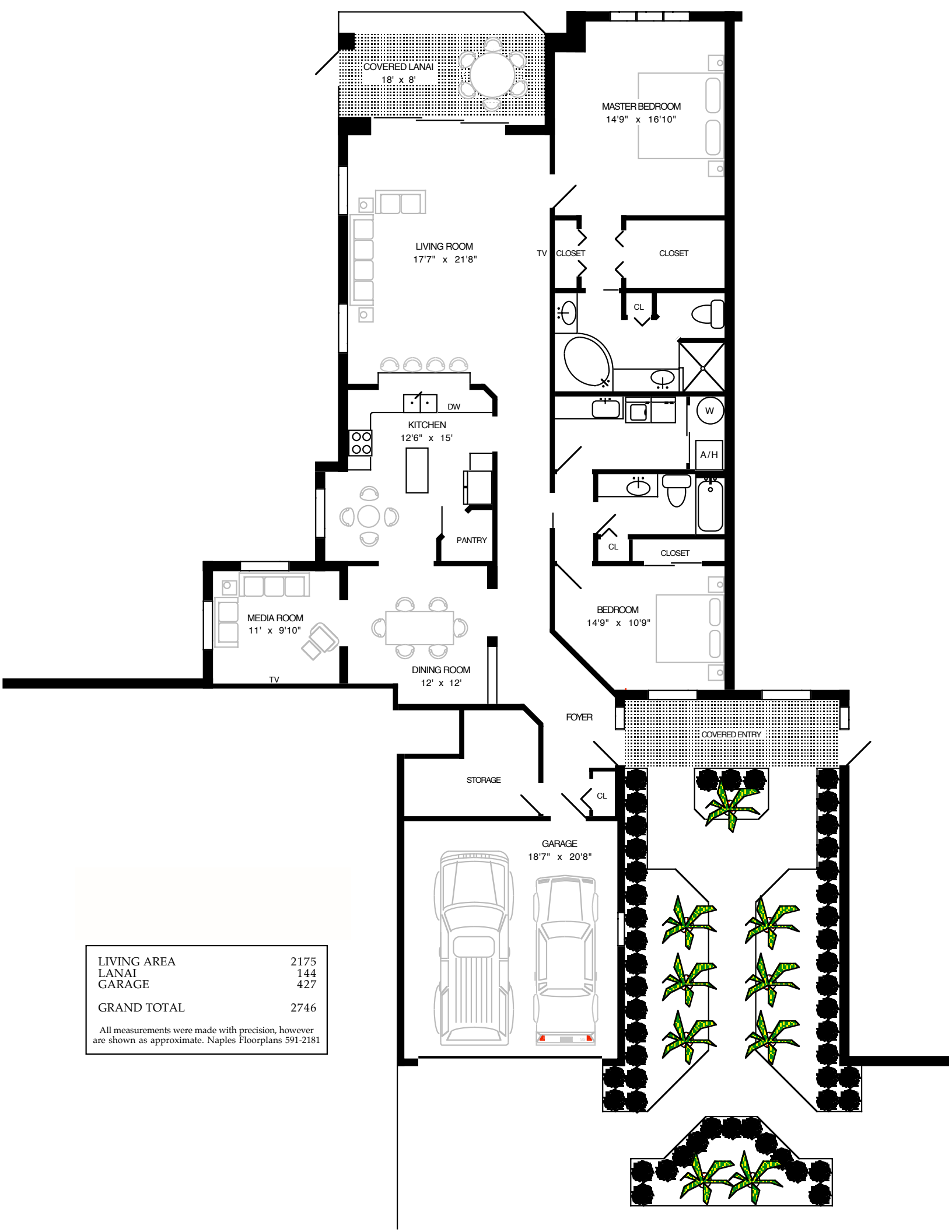
65'8"

6'

Antigua

LANCASTER SQUARE VILLA HOME
 2,126 SQUARE FEET UNDER AIR





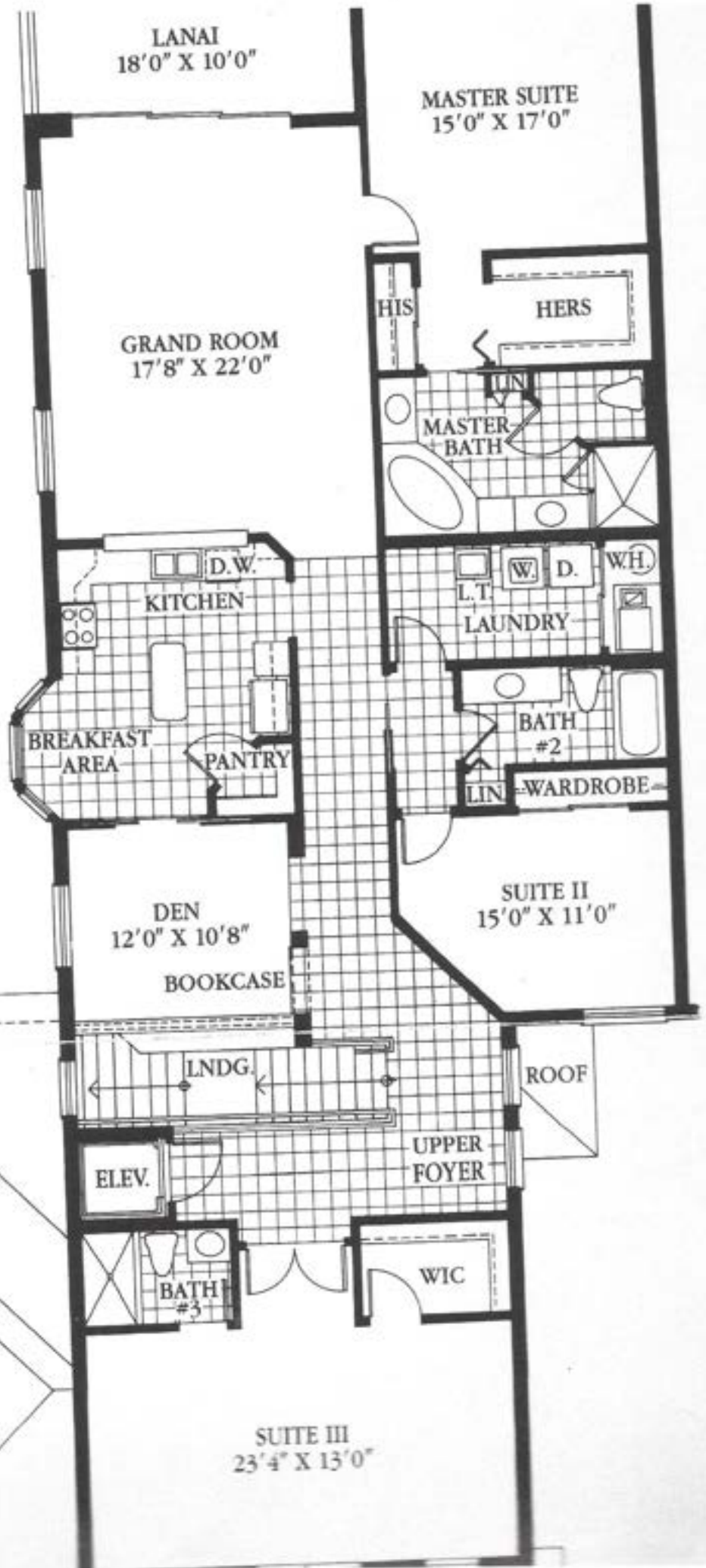
LIVING AREA	2175
LANAI	144
GARAGE	427
GRAND TOTAL	2746

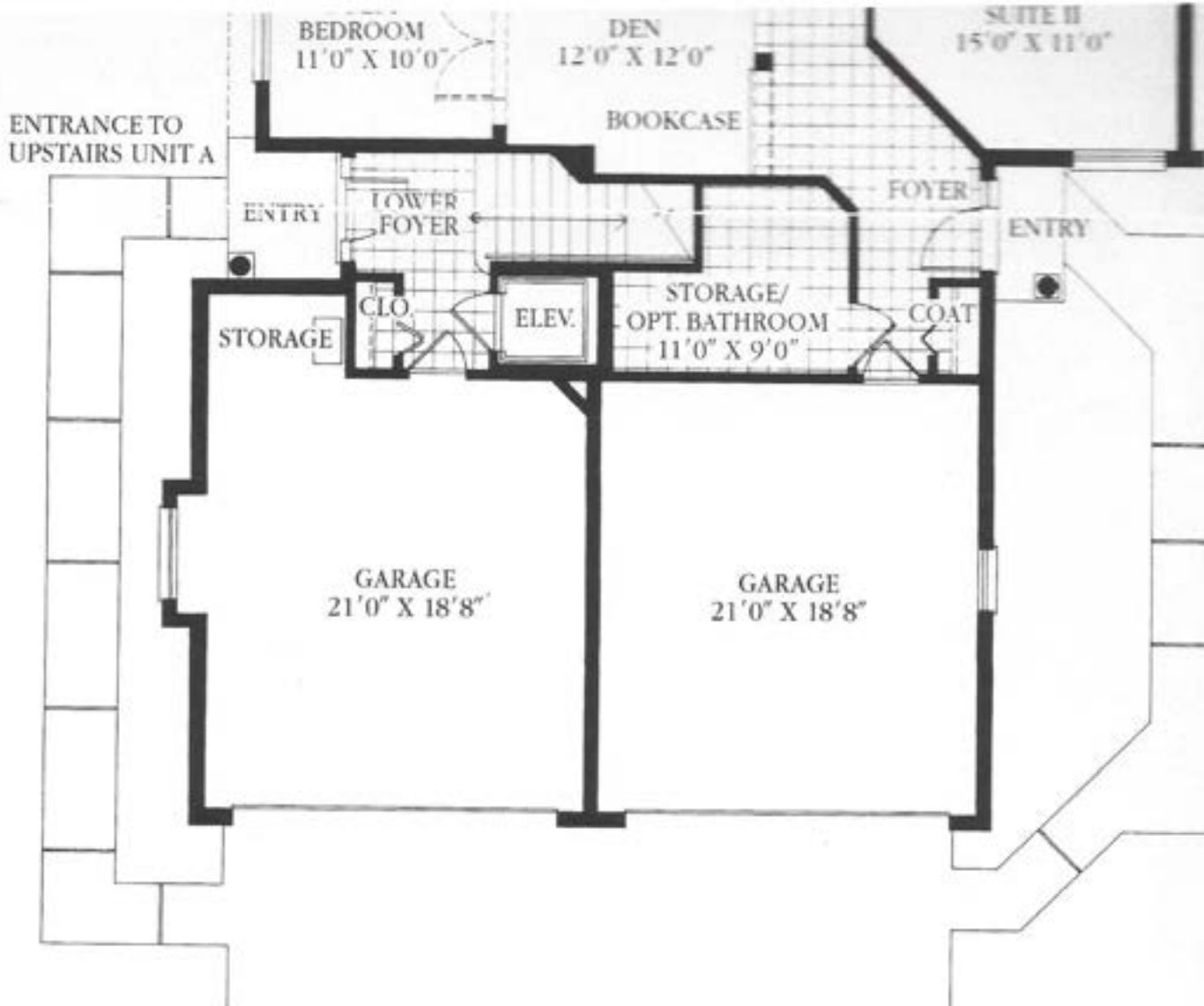
All measurements were made with precision, however are shown as approximate. Naples Floorplans 591-2181

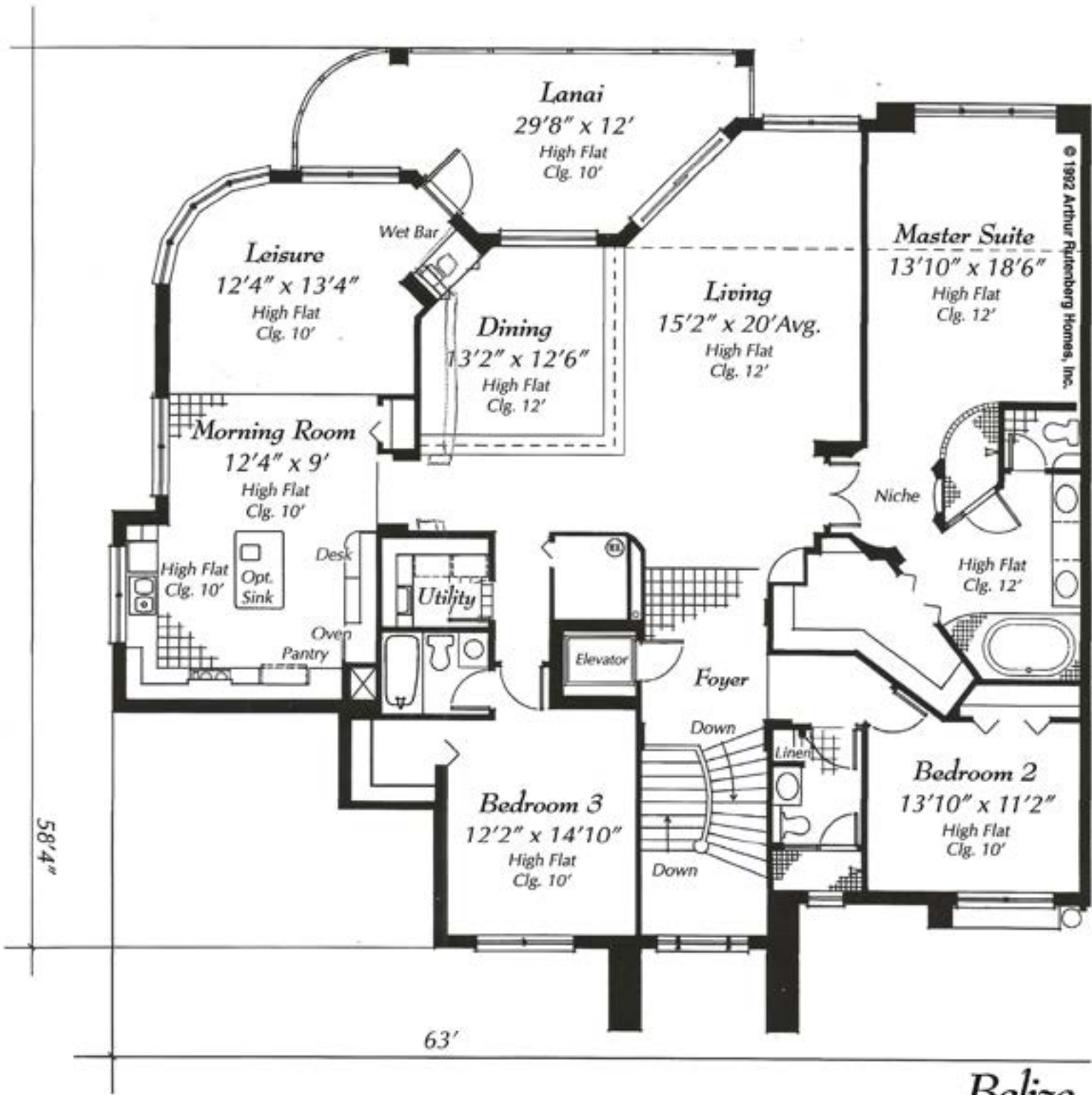
Living Area	2,686 Sq. Ft.
Under A/C	173 Sq. Ft.
Lanai	33 Sq. Ft.
Loggia	463 Sq. Ft.
Garage	
TOTAL	3,355 Sq. Ft.



OPTIONAL
HIS/HERS WIC
AT 1ST OR 2ND
FLOORS







© 1992 Arthur Rutenberg Homes, Inc.

Belize
2,866 square feet

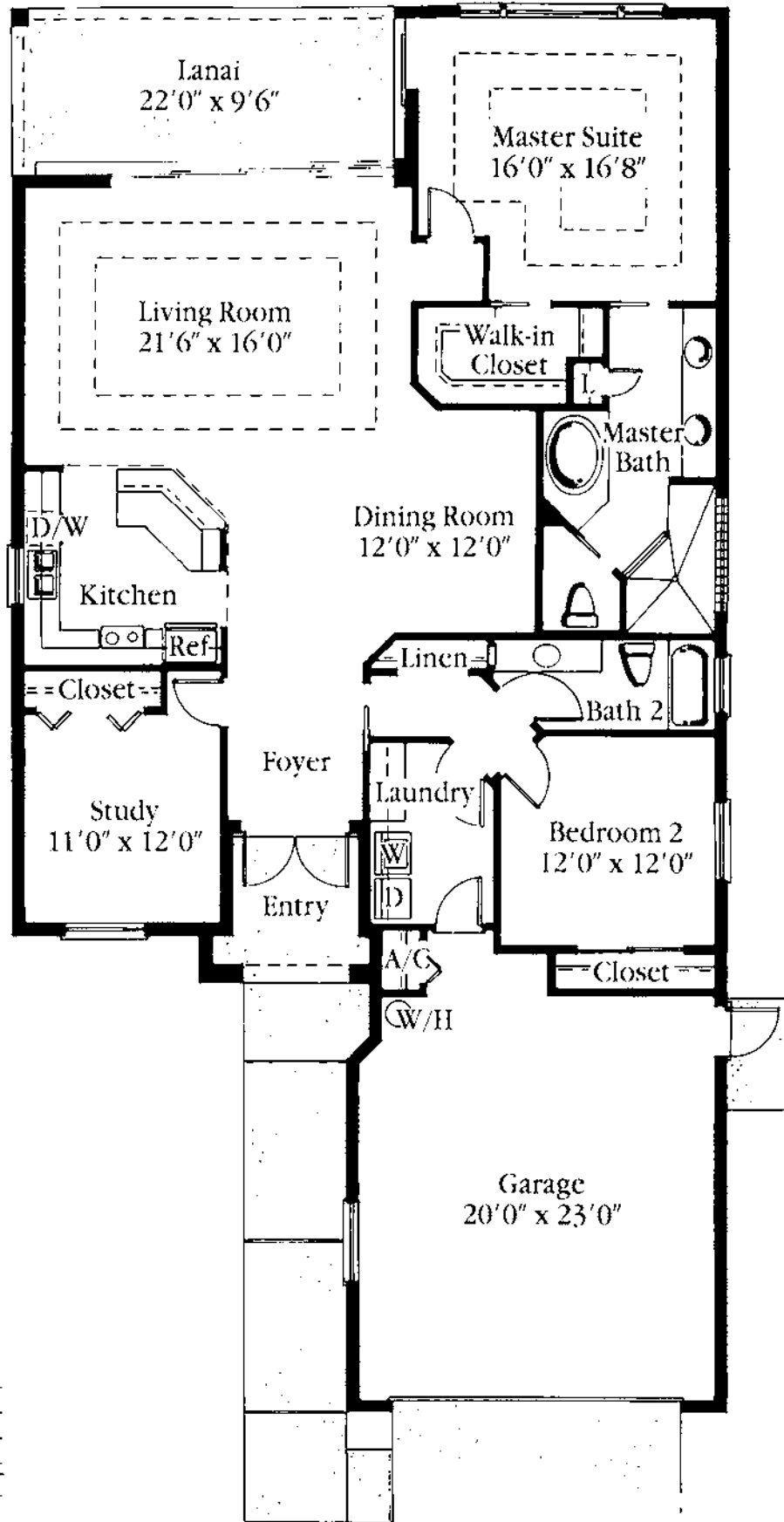
Because we are constantly improving our product, the floor plans and renderings shown in this publication are conceptual only. More detailed and reliable drawings will be furnished to each customer as part of their Building Agreement.



Kensington Golf & Country Club
 2700 Pine Ridge Road (one mile east of Airport Road), Naples, Florida 34109.
 Phone (941) 649-5699 or 1-800-216-1845.

All dimensions and specifications are approximate and subject to change without notice. Square footage is based on exterior wall dimensions. Seller reserves the right to make changes in the materials, appliances, or equipment. Any substituted materials, appliances, or equipment shall be of equivalent or better quality. Some restrictions on exterior color selections may apply. Illustrations are an artist's rendering.





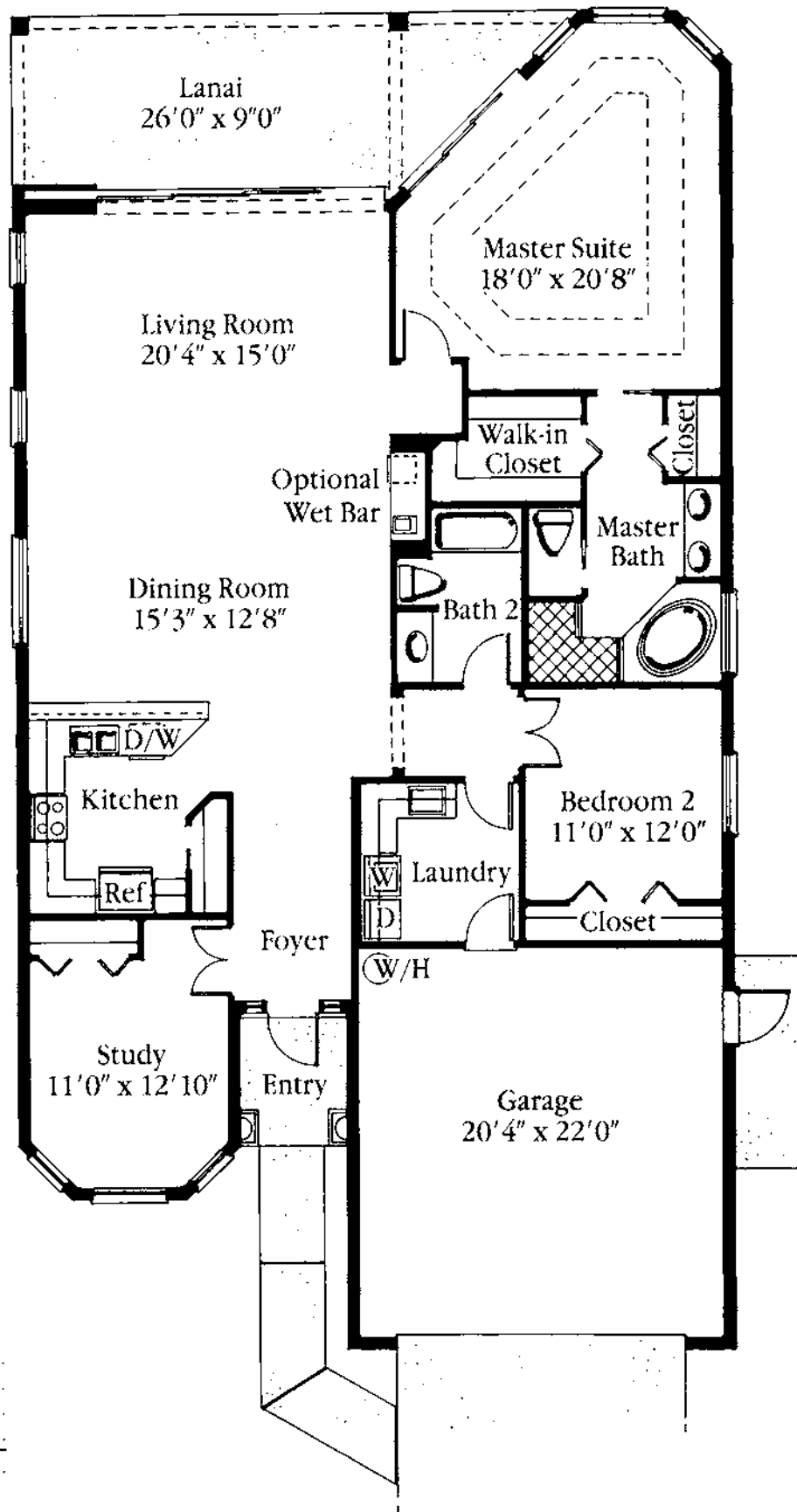
Square Footage

Living Area	
Under A/C	1,891 Sq. Ft.
Lanai	208 Sq. Ft.
Entry	66 Sq. Ft.
Garage	534 Sq. Ft.
TOTAL	2,699 Sq. Ft.

Kensington Golf & Country Club
 2700 Pine Ridge Road (one mile east of Airport Road), Naples, Florida 34109.
 Phone (941) 649-5699 or 1-800-216-1845.

All dimensions and specifications are approximate and subject to change without notice. Square footage is based on exterior wall dimensions. Seller reserves the right to make changes in the materials, appliances, or equipment. Any substituted materials, appliances, or equipment shall be of equivalent or better quality. Some restrictions on exterior color selections may apply. Illustrations are an artist's rendering.





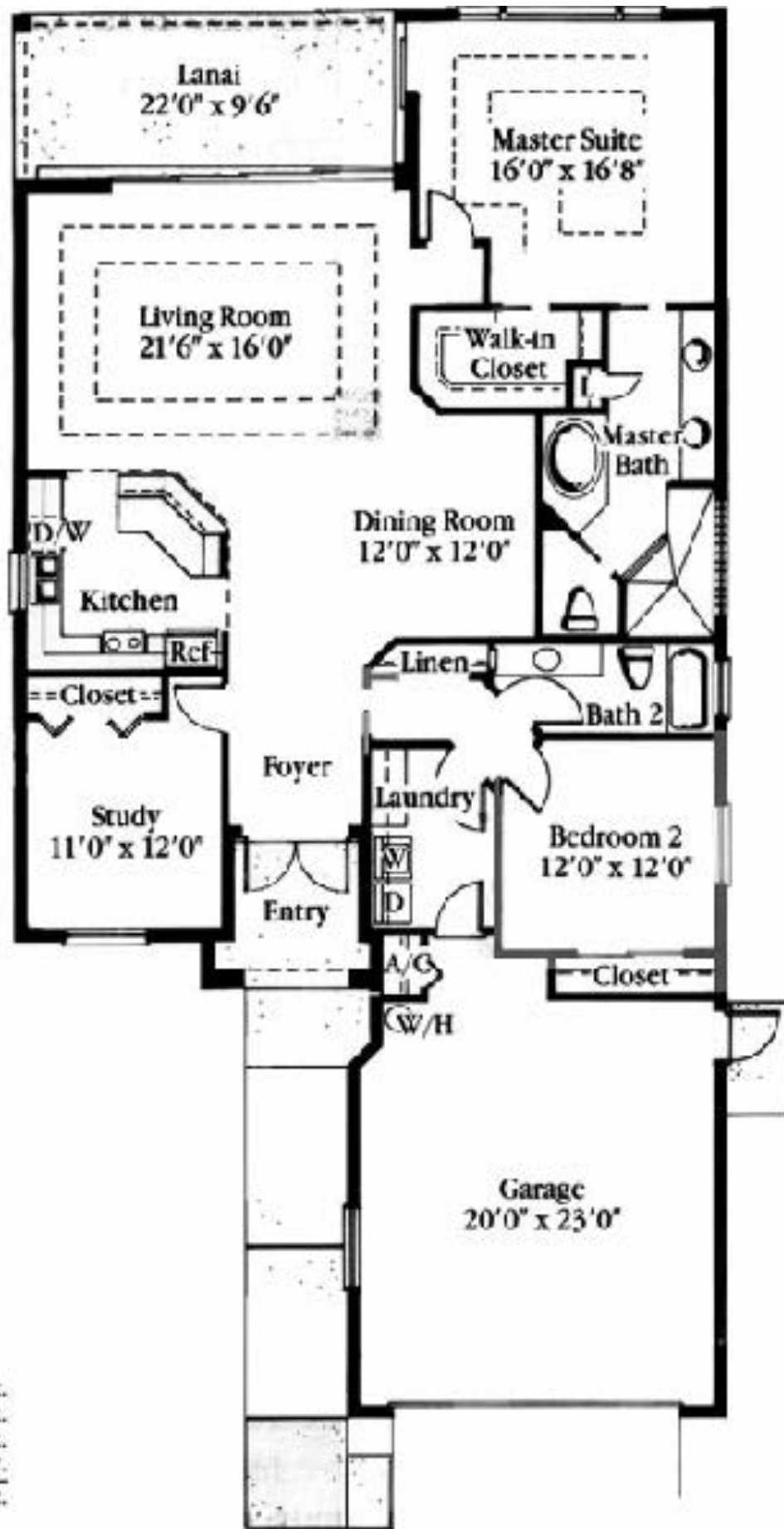
Square Footage

Living Area	
Under A/C	2,023 Sq. Ft.
Lanai	277 Sq. Ft.
Entry	45 Sq. Ft.
Garage	488 Sq. Ft.
TOTAL	2,833 Sq. Ft.

Kensington Golf & Country Club
 2700 Pine Ridge Road (one mile east of Airport Road), Naples, Florida 34109.
 Phone (941) 649-5699 or 1-800-216-1845.

All dimensions and specifications are approximate and subject to change without notice. Square footage is based on exterior wall dimensions. Seller reserves the right to make changes in the materials, appliances, or equipment. Any substituted materials, appliances, or equipment shall be of equivalent or better quality. Some restrictions on exterior color selections may apply. Illustrations are an artist's rendering.





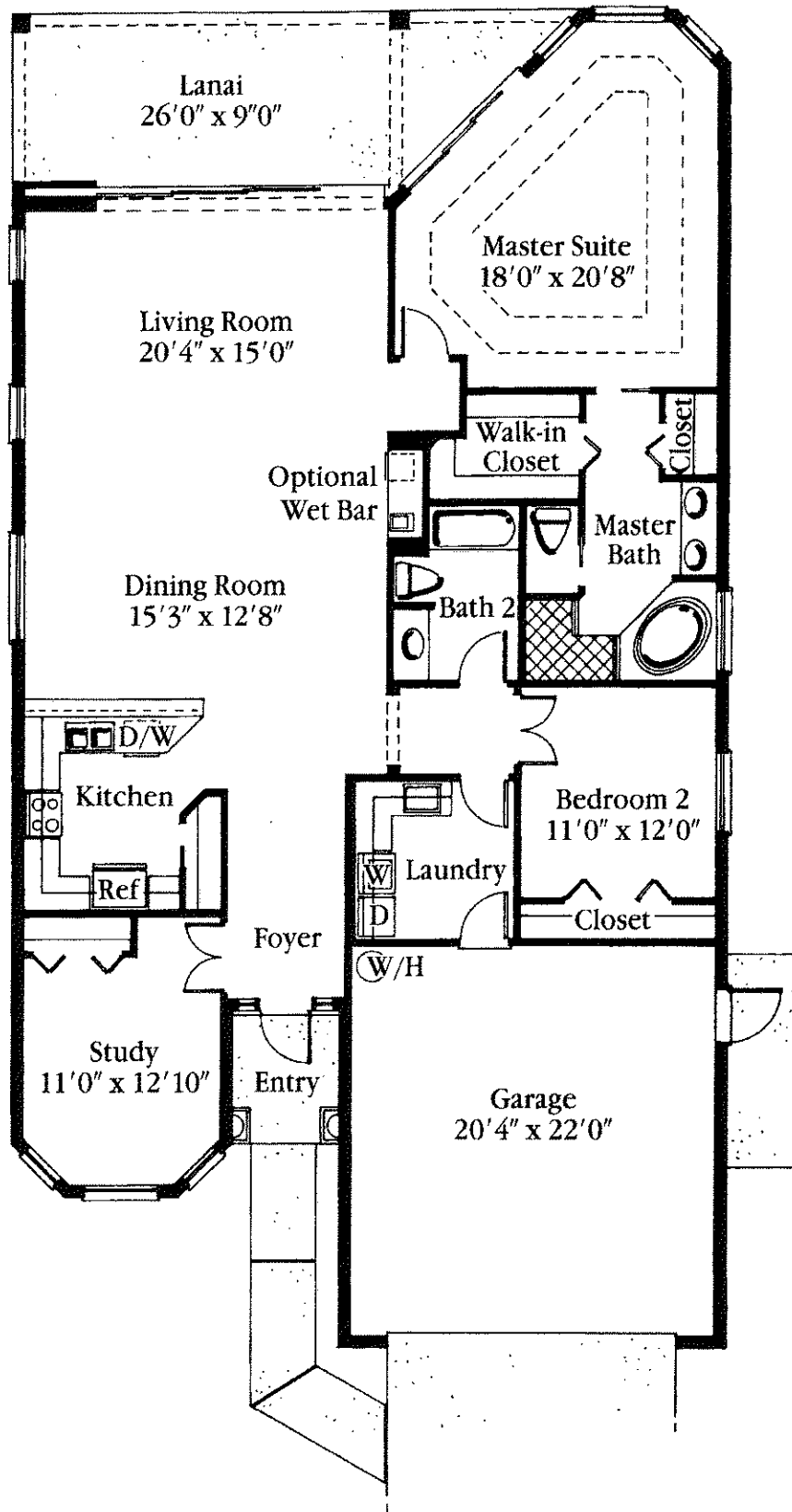
Square Footage

Living Area	
Under A/C	1,891 Sq. Ft.
Lanai	208 Sq. Ft.
Entry	66 Sq. Ft.
Garage	534 Sq. Ft.
TOTAL	2,699 Sq. Ft.

Kensington Golf & Country Club
 2700 Pine Ridge Road (one mile east of Airport Road), Naples, Florida 34109.
 Phone: (941) 649-5699 or 1-800-216-1845.

All dimensions and specifications are approximate and subject to change without notice. Square footage is based on exterior wall dimensions. Seller reserves the right to make changes in the materials, appliances, or equipment. Any substituted materials, appliances, or equipment shall be of equivalent or better quality. Some restrictions on exterior color selections may apply. Illustrations are an artist's rendering.





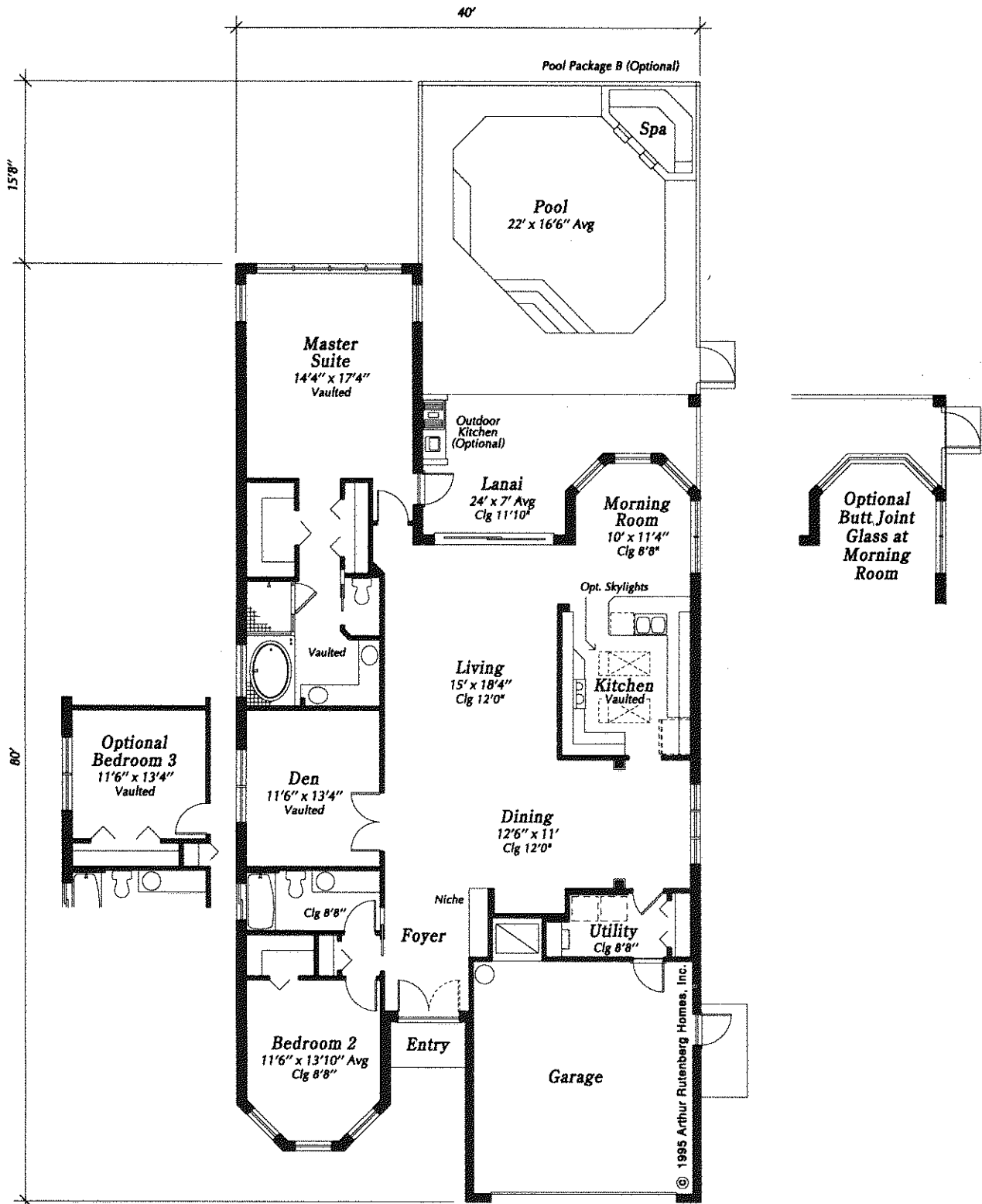
Square Footage

Living Area	
Under A/C	2,023 Sq. Ft.
Lanai	277 Sq. Ft.
Entry	45 Sq. Ft.
Garage	488 Sq. Ft.
TOTAL	2,833 Sq. Ft.

Kensington Golf & Country Club
 2700 Pine Ridge Road (one mile east of Airport Road), Naples, Florida 34109.
 Phone (941) 649-5699 or 1-800-216-1845.

All dimensions and specifications are approximate and subject to change without notice. Square footage is based on exterior wall dimensions. Seller reserves the right to make changes in the materials, appliances, or equipment. Any substituted materials, appliances, or equipment shall be of equivalent or better quality. Some restrictions on exterior color selections may apply. Illustrations are an artist's rendering.

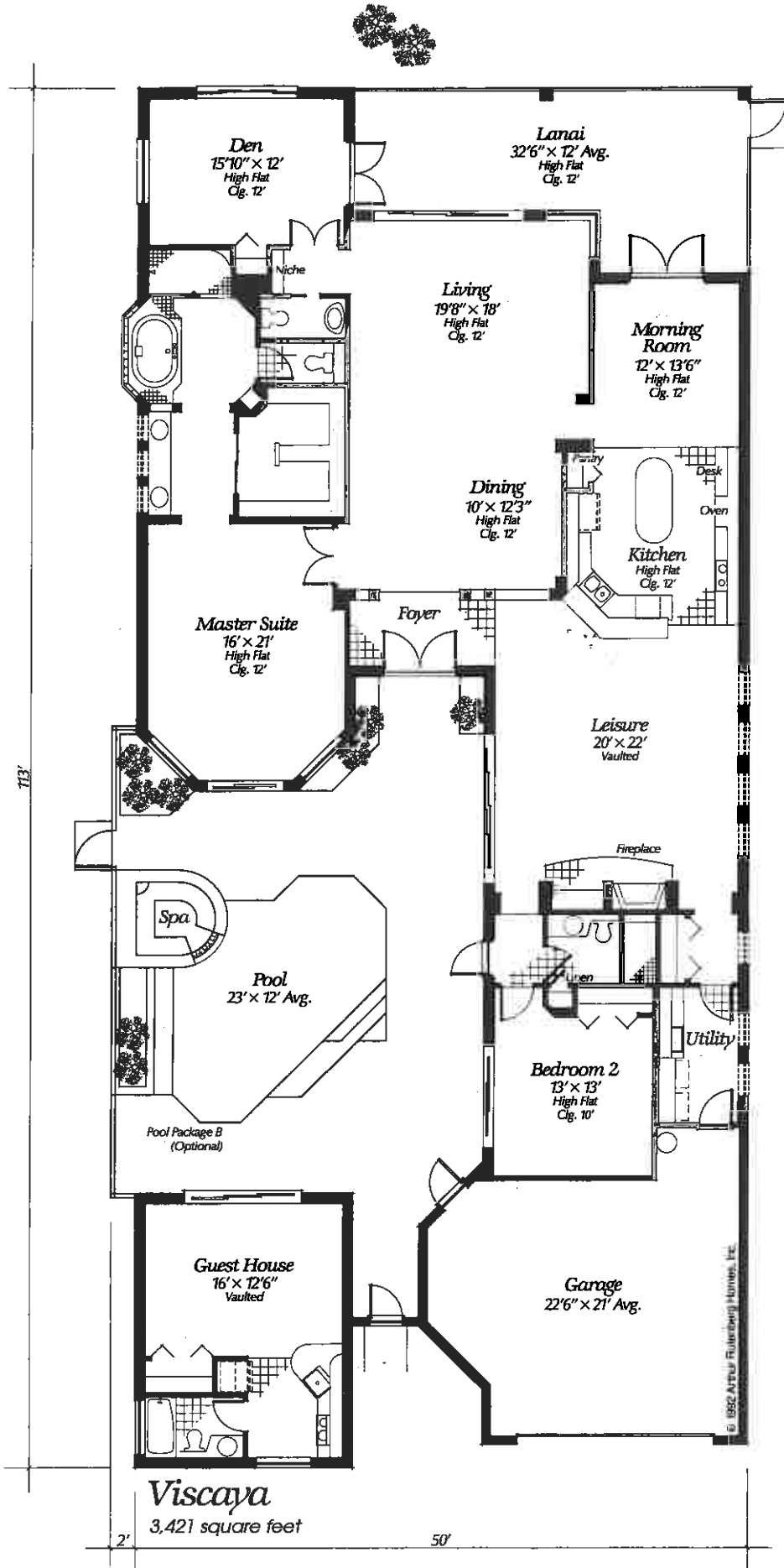




Montreux

2,112 square feet
Plan # 334-02

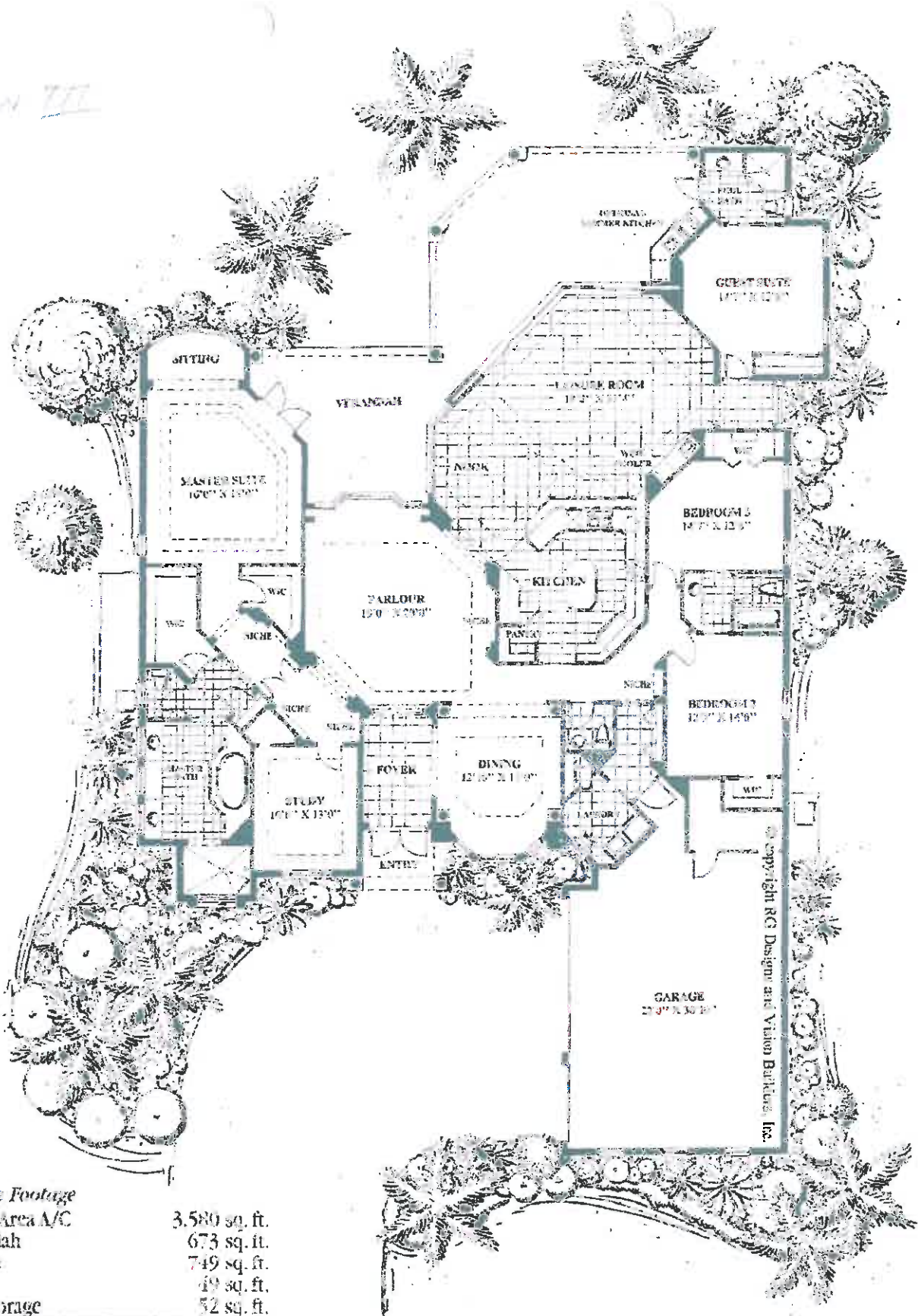
The floor plans and renderings shown in this publication are conceptual only, due to the continuous refinement of our product and specifications. Please refer to the Specifications to determine whether items such as the fireplace or tile are standard or optional. For a more detailed floor plan, reference should be made to the Working Drawing.



Viscaya
3,421 square feet

Plans and specifications subject to change without notice.

VISION III

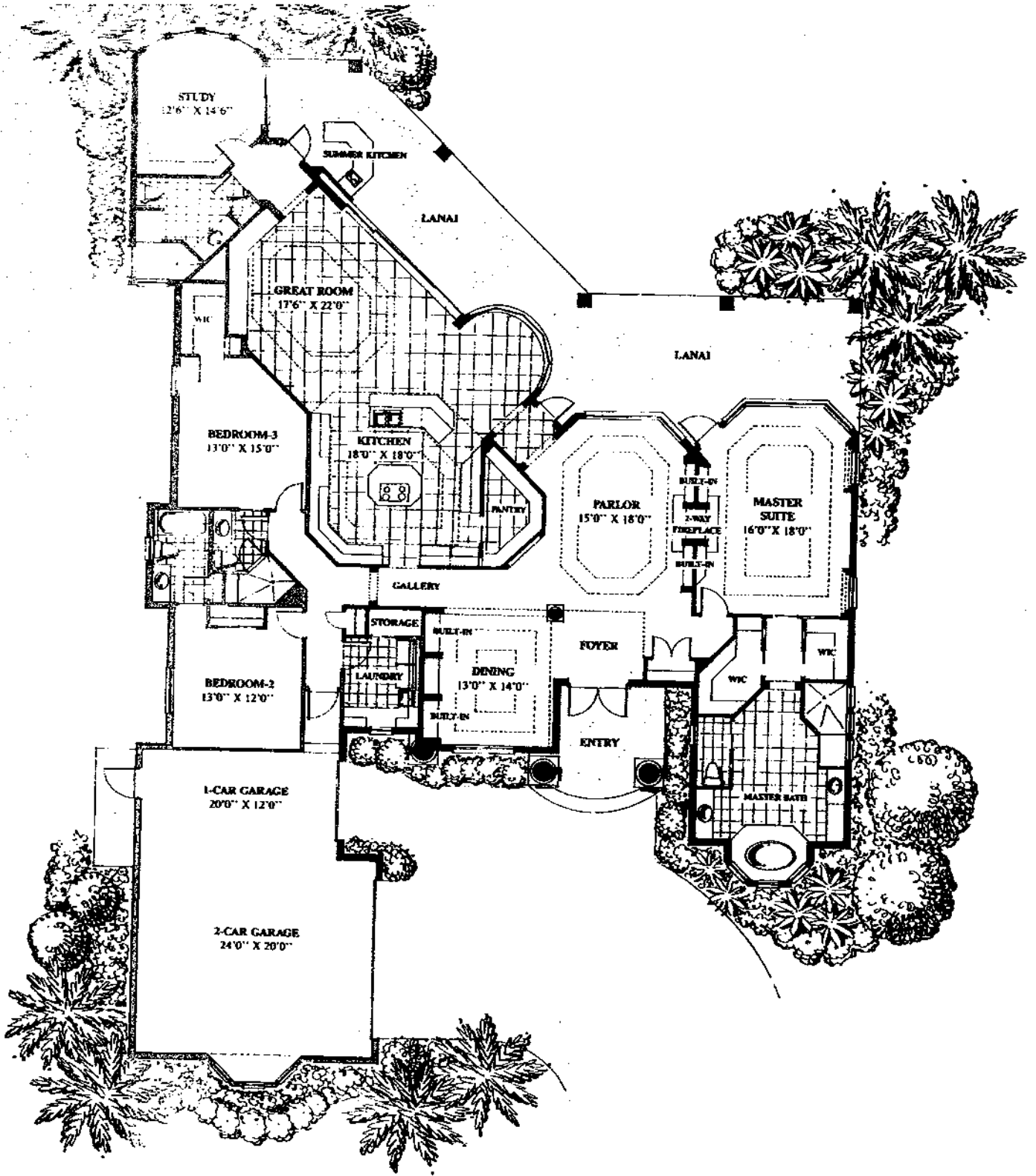


Square Footage	
Living Area A/C	3,580 sq. ft.
Verandah	673 sq. ft.
Garage	749 sq. ft.
Entry	49 sq. ft.
A/C Storage	52 sq. ft.
TOTAL	5,103 sq. ft.

Kensington Golf & Country Club
 2700 Pine Ridge Road (1/2 mile east of Airport Road), Naples, Florida 34109.
 Phone (941) 649-5699 or 1-800-216-1845.
www.kensington-naples.com
 email: sales@kensington-naples.com

All dimensions and specifications are approximate and subject to change without notice. Square footage is based on exterior wall dimensions. Seller reserves the right to make changes in the materials, appliances, or equipment. Any substituted materials, appliances, or equipment shall be of equivalent or better quality. Some restrictions on exterior color selections may apply. Illustrations are an artist's rendering.





Crown Royal

KITCHEN

- Corian Countertops
- KitchenAid Appliances
- Premium Cabinets
- Full Pantries
- Picture Phone to Front Entrance
- Ceramic Tile Floors

MASTER SUITE

- Arched Windows Overlooking Pool and Lake
- His & Her Bathrooms
- His & Her Walk-In Closets with Built-in Cabinets
- Tray Ceiling with Accent Lighting
- His and Her Vanities
- Roman Tub
- Two Head Shower
- Kohler Plumbing Fixtures
- One Piece Water Closet & Bidet
- Marble Floors in Bath

POOL & LANAI

- Heated Pool
- Heated Whirlpool Cascading Spa
- Tiled Summer Kitchen
- Jenn Air Gas Grill
- Interlocking Brick Paver Pool Deck

FAMILY ROOM

- Stone Gas Fireplace
- Built In Audio-Visual Center
- French Doors to Pool & Cabana

LIVING ROOM

- Gallery Framed by Architectural Wood Columns
- Marble Wet Bar with Custom Glass Shelves
- French Doors Overlooking Pool and Lake
- Fireplace
- Ceramic Tile Floors

SPECIAL FEATURES

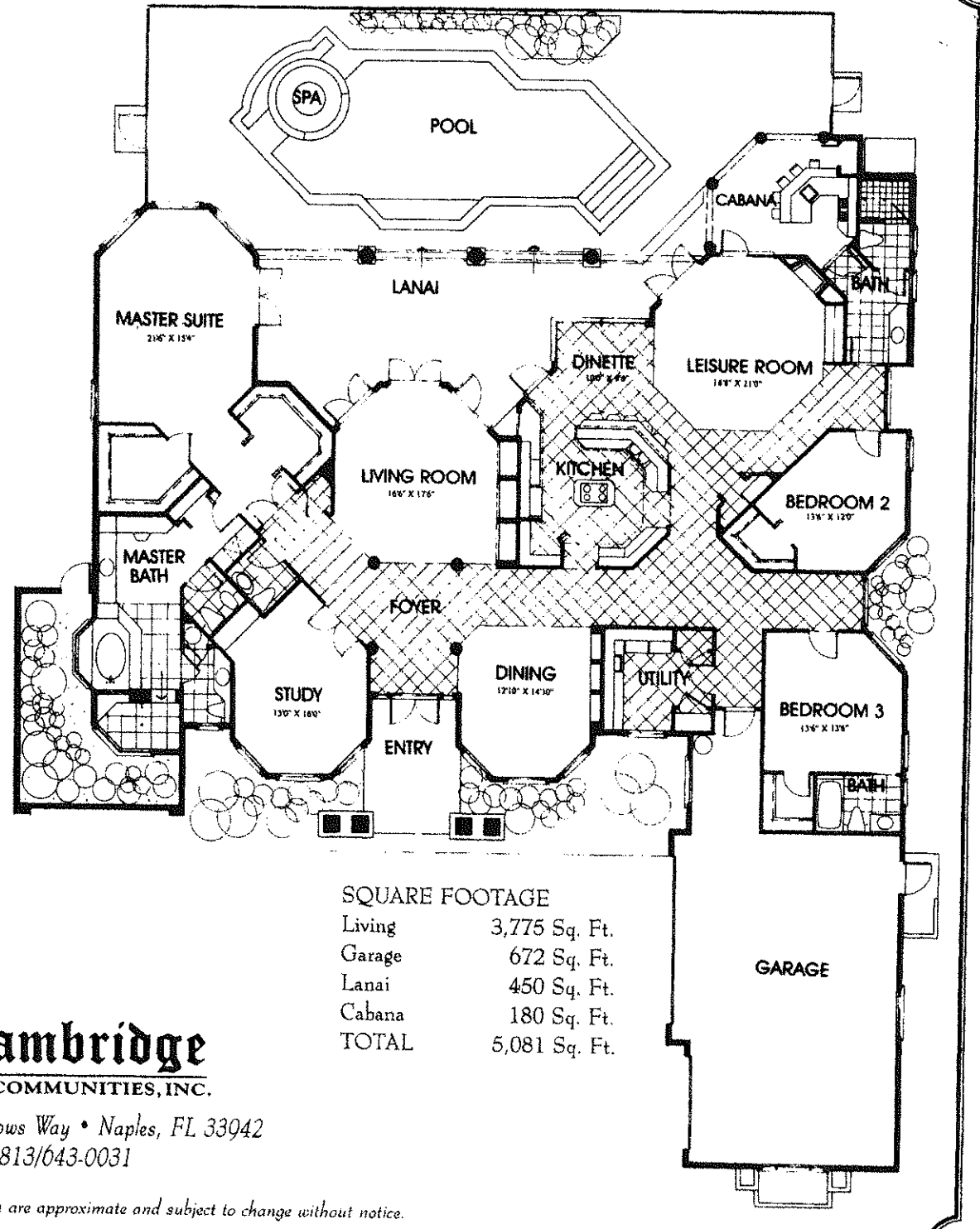
- Security System
- Custom Trim Package
- High Flat 12" Ceilings

Interiors by
Stacy's

ETHAN ALLEN
HOME INTERIORS

Cambridge
COMMUNITIES, INC.

5204 Old Gallows Way • Naples, FL 33942
813/643-0031

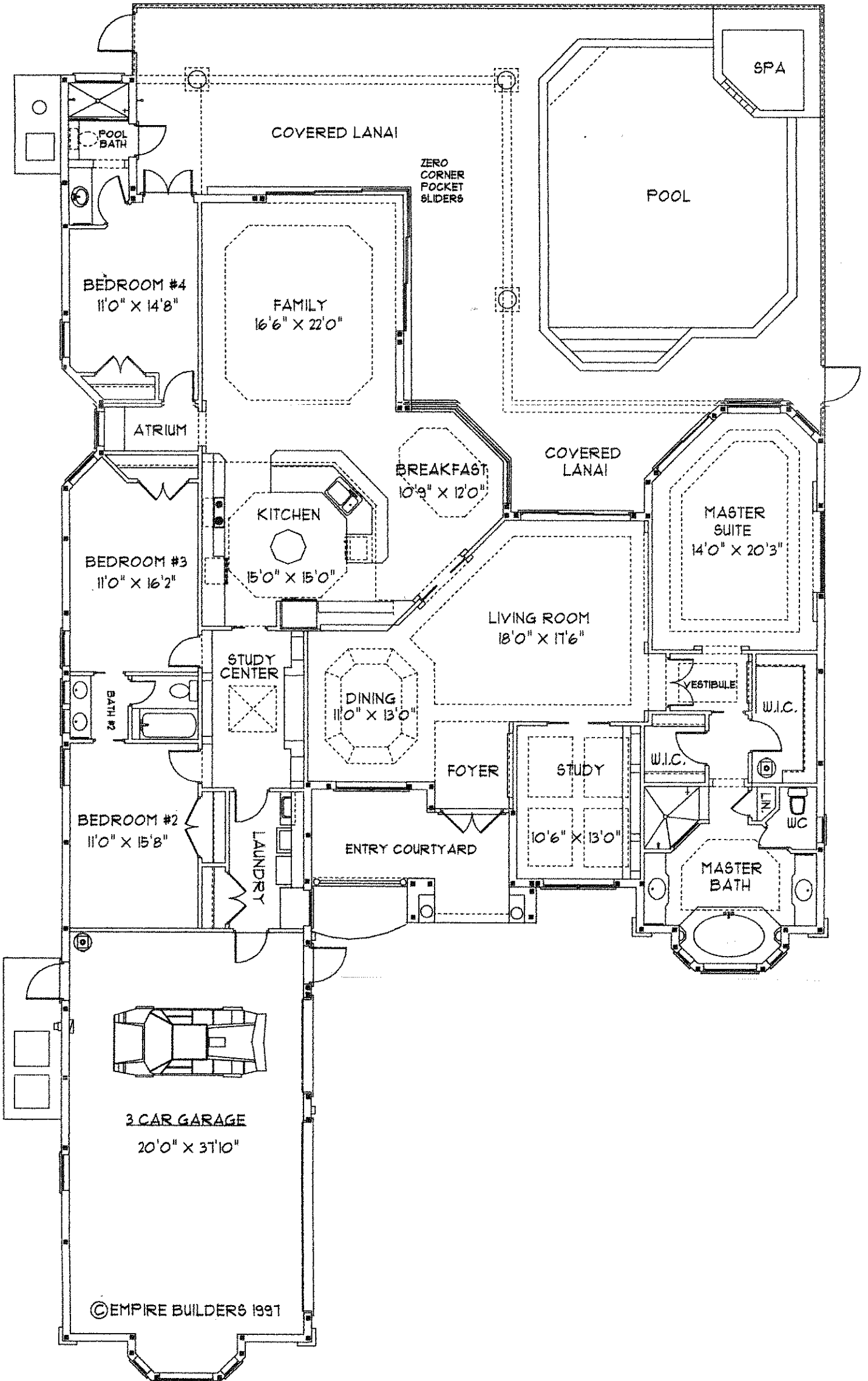


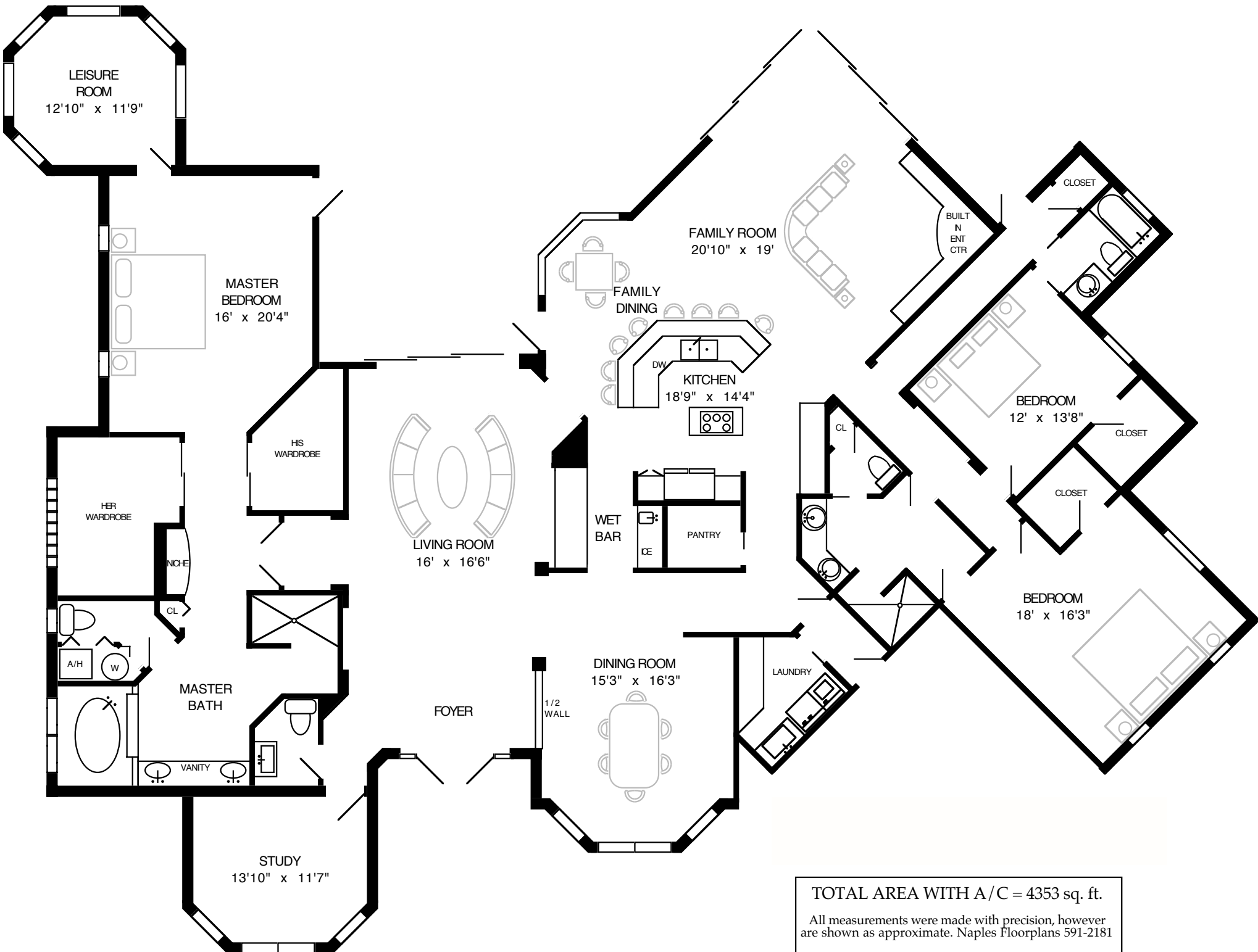
SQUARE FOOTAGE

Living	3,775 Sq. Ft.
Garage	672 Sq. Ft.
Lanai	450 Sq. Ft.
Cabana	180 Sq. Ft.
TOTAL	5,081 Sq. Ft.

All plans, dimensions and information are approximate and subject to change without notice.

Empire Builders Presents:





TOTAL AREA WITH A/C = 4353 sq. ft.
 All measurements were made with precision, however are shown as approximate. Naples Floorplans 591-2181

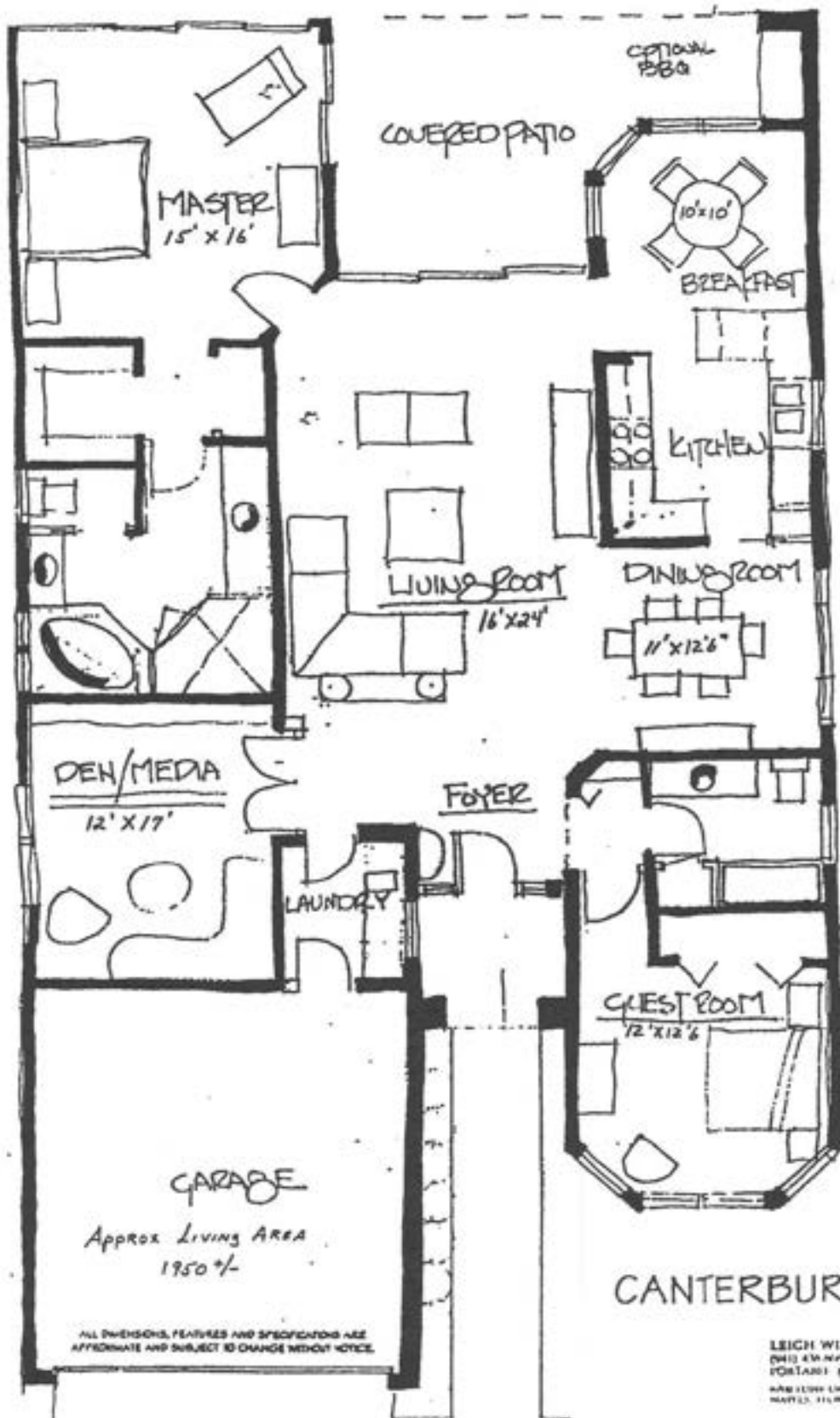


Main Living	2103 sq. ft.
Upper Level	825 sq. ft.

TOTAL UNDER AIR	2928 sq. ft.
Garage	513 sq. ft.
Covered Entry	45 sq. ft.
Covered Balcony	188 sq. ft.
Covered Lanai	251 sq. ft.

TOTAL UNDER ROOF	3925 sq. ft.
Lanai/Pool	813 sq. ft.

TOTAL AREA	4738 sq. ft.
------------	--------------



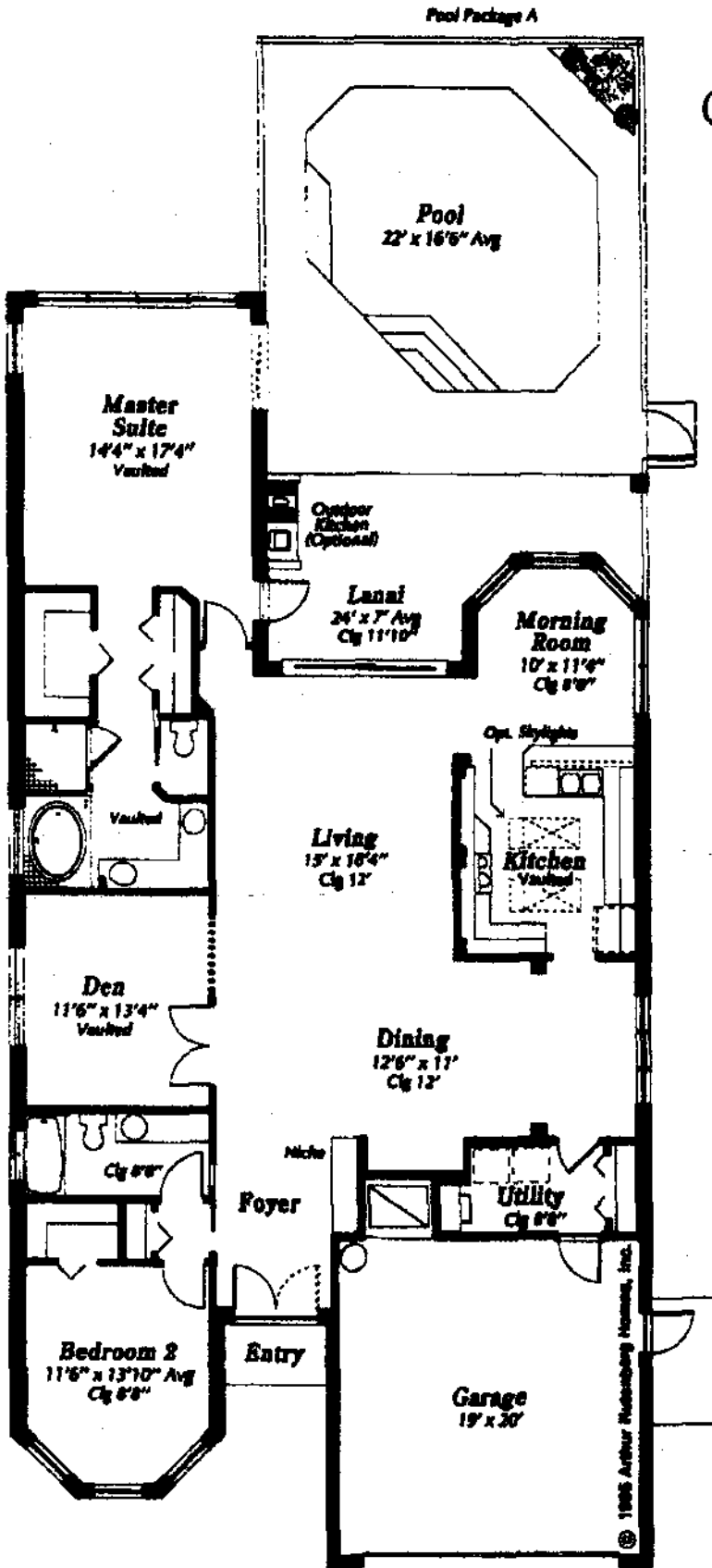
ALL DIMENSIONS, FEATURES AND SPECIFICATIONS ARE APPROXIMATE AND SUBJECT TO CHANGE WITHOUT NOTICE.

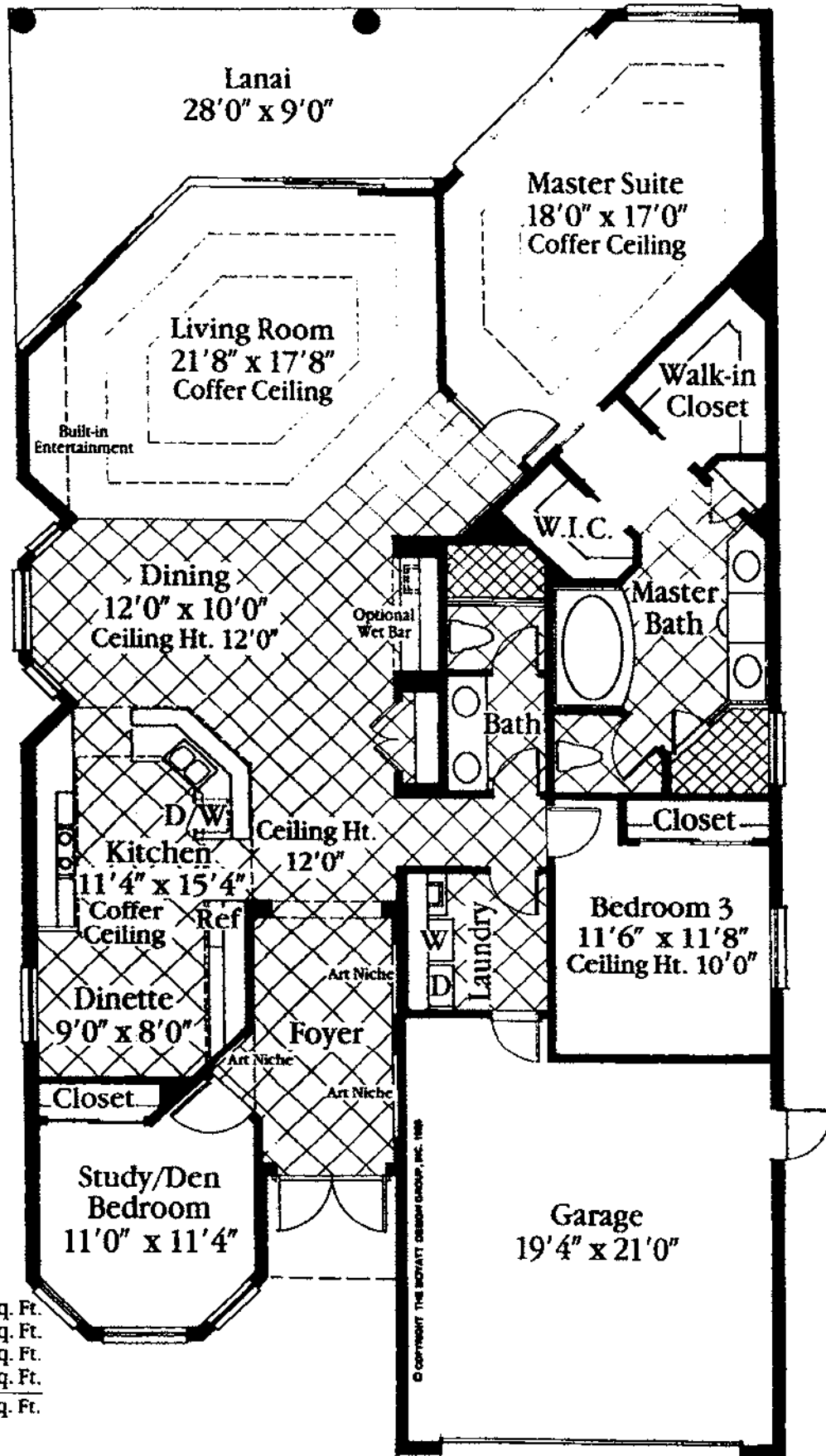
CANTERBURY III

LEIGH WILSON
 (941) 438-9446
 PORTLAND (941) 371-1425
 3400 US HWY 90, SEVEN
 HAVEN, FLORIDA 32068

STANDERLEWS

CANTERBURY
GREEN
VILLA
HOME
2,112
SQUARE
FEET
UNDER
AIR



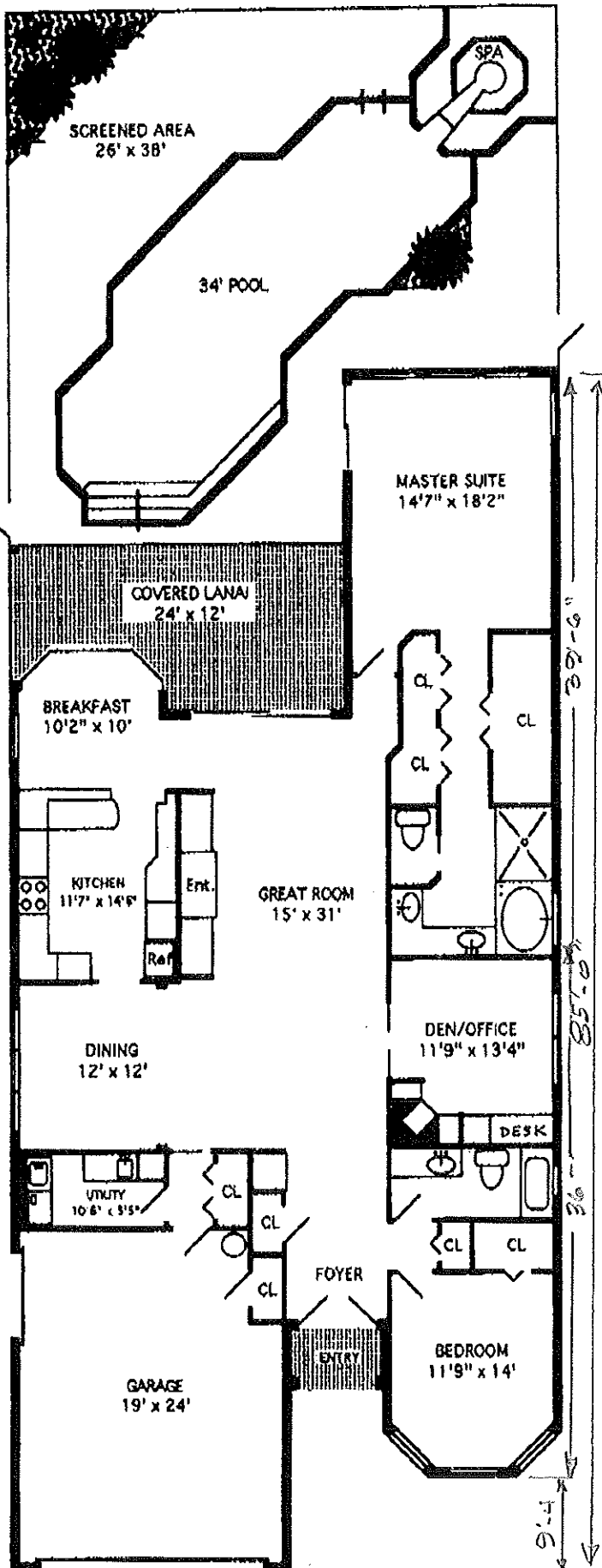


Square Footage	
Living Area	
Under A/C	2,204 Sq. Ft.
Lanai	289 Sq. Ft.
Entry	35 Sq. Ft.
Garage	463 Sq. Ft.
TOTAL	2,991 Sq. Ft.

Kensington Golf & Country Club
 2700 Pine Ridge Road (one mile east of Airport Road), Naples, Florida 34109.
 Phone (941) 649-5699 or 1-800-216-1845.

All dimensions and specifications are approximate and subject to change without notice. Square footage is based on exterior wall dimensions. Seller reserves the right to make changes in the materials, appliances, or equipment. Any substituted materials, appliances, or equipment shall be of equivalent or better quality. Some restrictions on exterior color selections may apply. Illustrations are an artist's rendering.

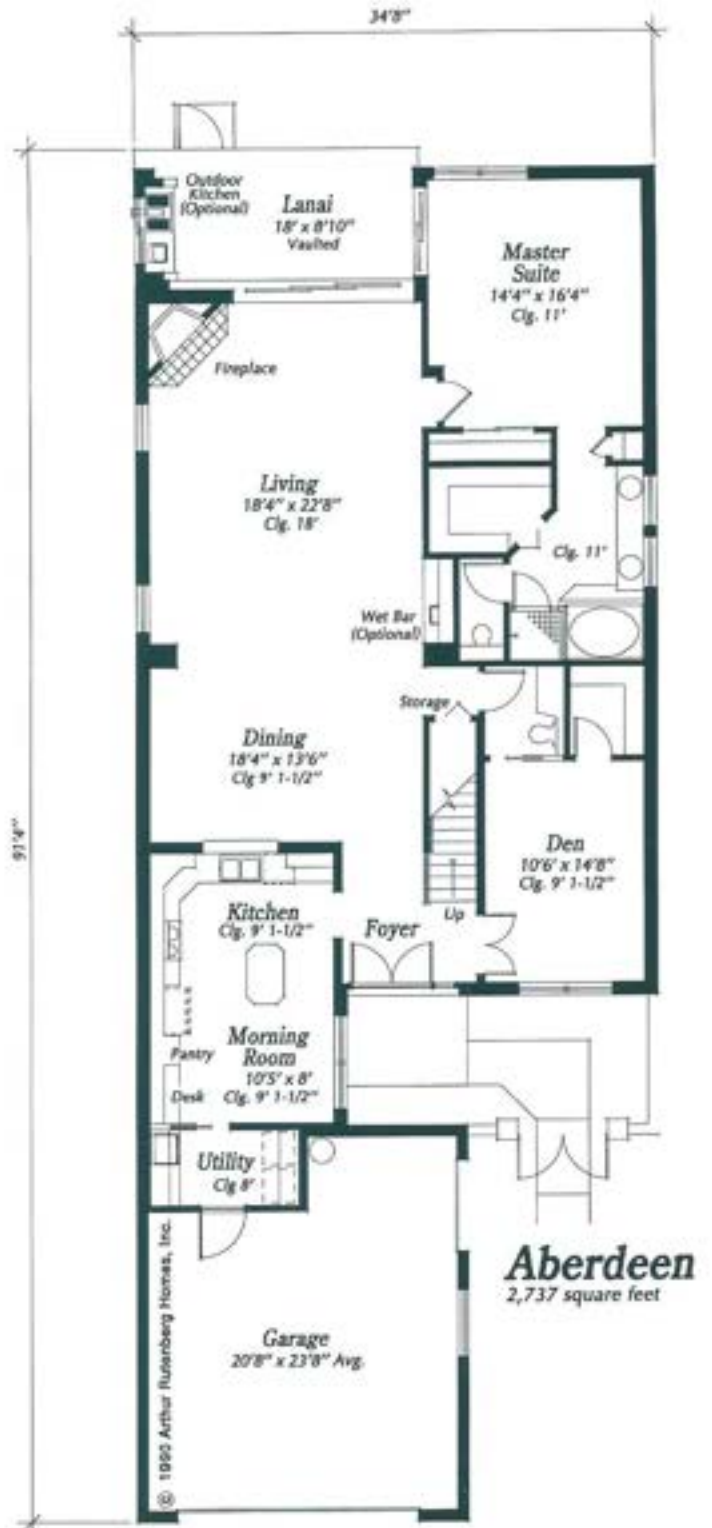
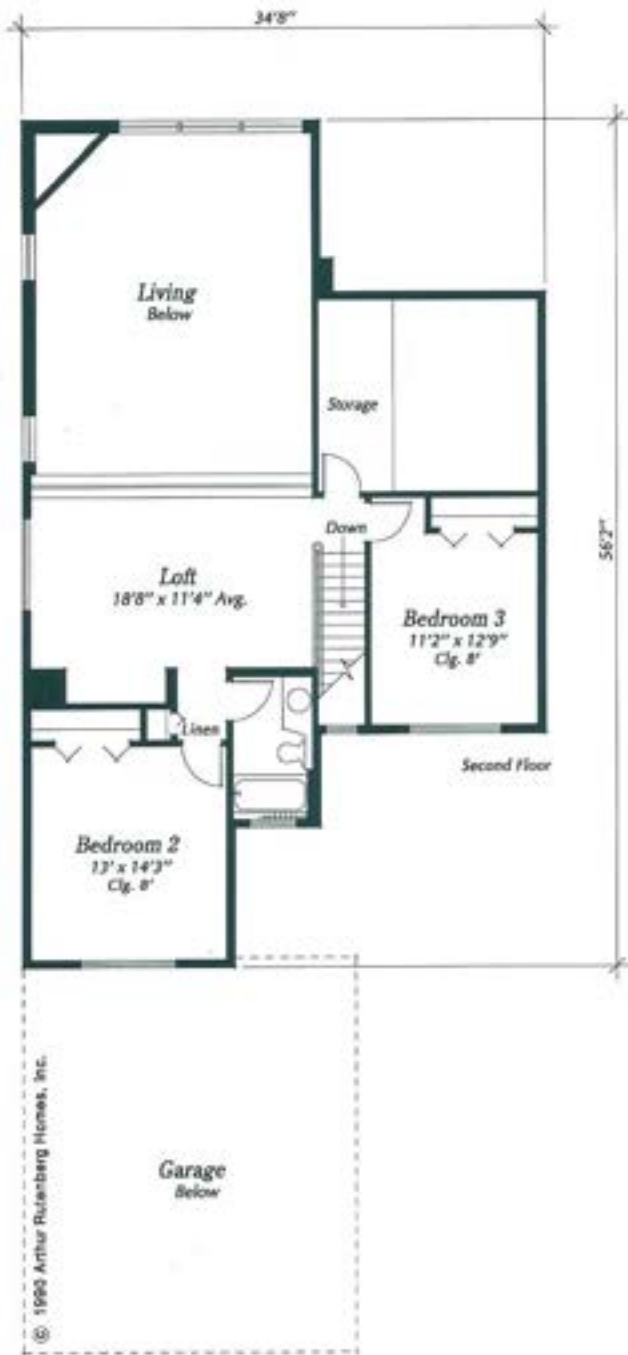




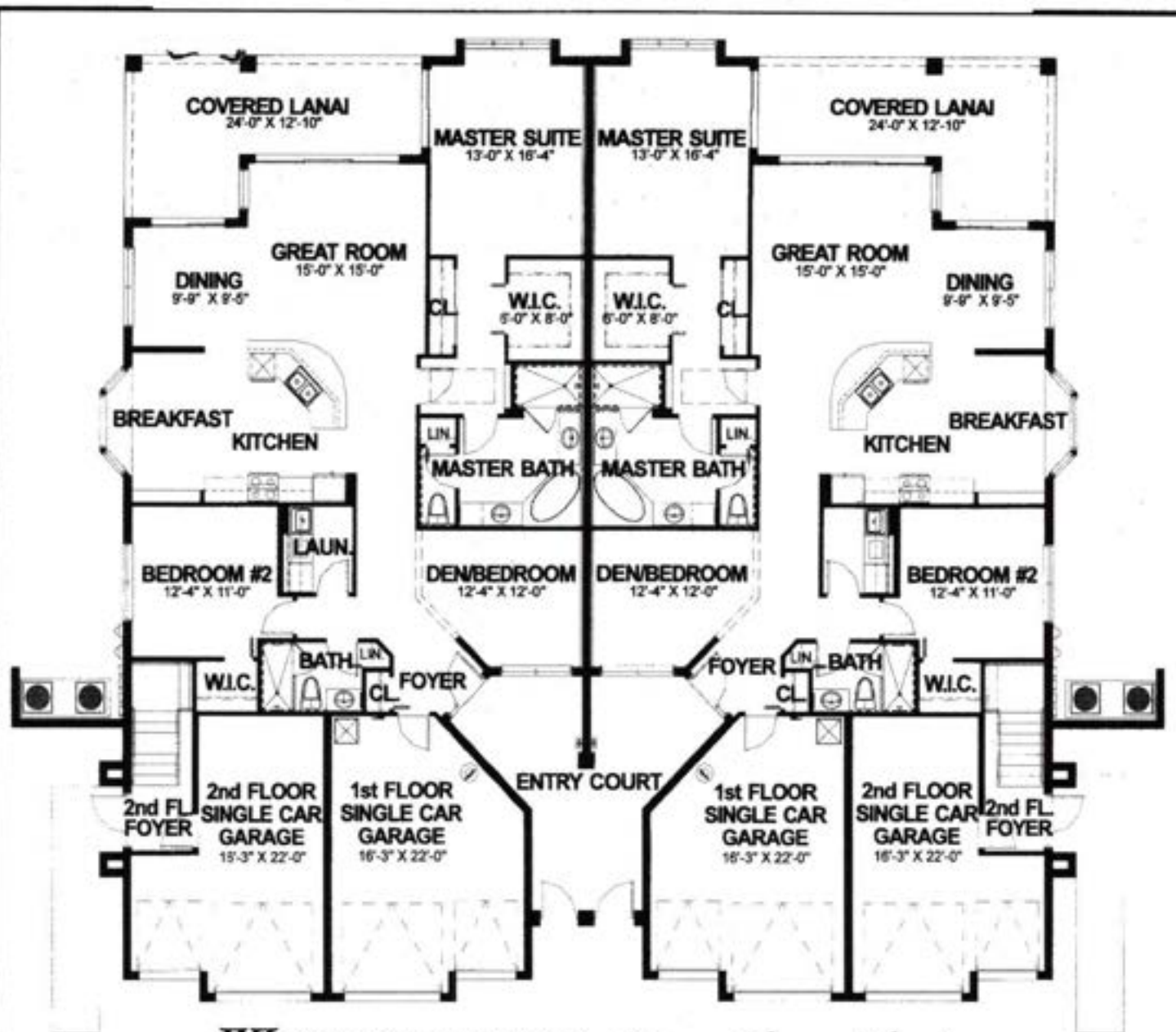
2514 HIGH COURT KENSINGTON, NAPLES

LIVING AREA	2224
COVERED LANAI	217
SCREENED AREA	1334
GARAGE	456
ENTRY	26
TOTAL AREA	4257

All measurements were made with precision, however are shown as approximate. Naples Floorplans. 591-2181.



1st Fl.	1942
2nd Fl.	1001
Lanai	178
Garage	513
Entry	48



WESTCHESTER (First Floor Plan)

Interior Features

Private covered entrance

Front door chime

Insulated front entrance door with security viewer and deadbolt hardware

Glazed 8" ceramic tile foyer in your choice of colors

Lavish 9' ceilings in first floor residences

Tray ceilings in portions of second floor residences

Smoke detectors

Stain resistant wall-to-wall carpeting in choice of colors with upgrade 6# pad

Decorator plant shelves

Bi-fold doors on Bedroom closets

Vinyl-covered ventilated shelving all closets

Colonial wood trim and door casings in all rooms

Textured walls in living and bedroom areas

Smooth-coated walls in bathrooms and kitchen

Spacious walk-in closet in master bedroom

Energy-efficient central air conditioning and heating

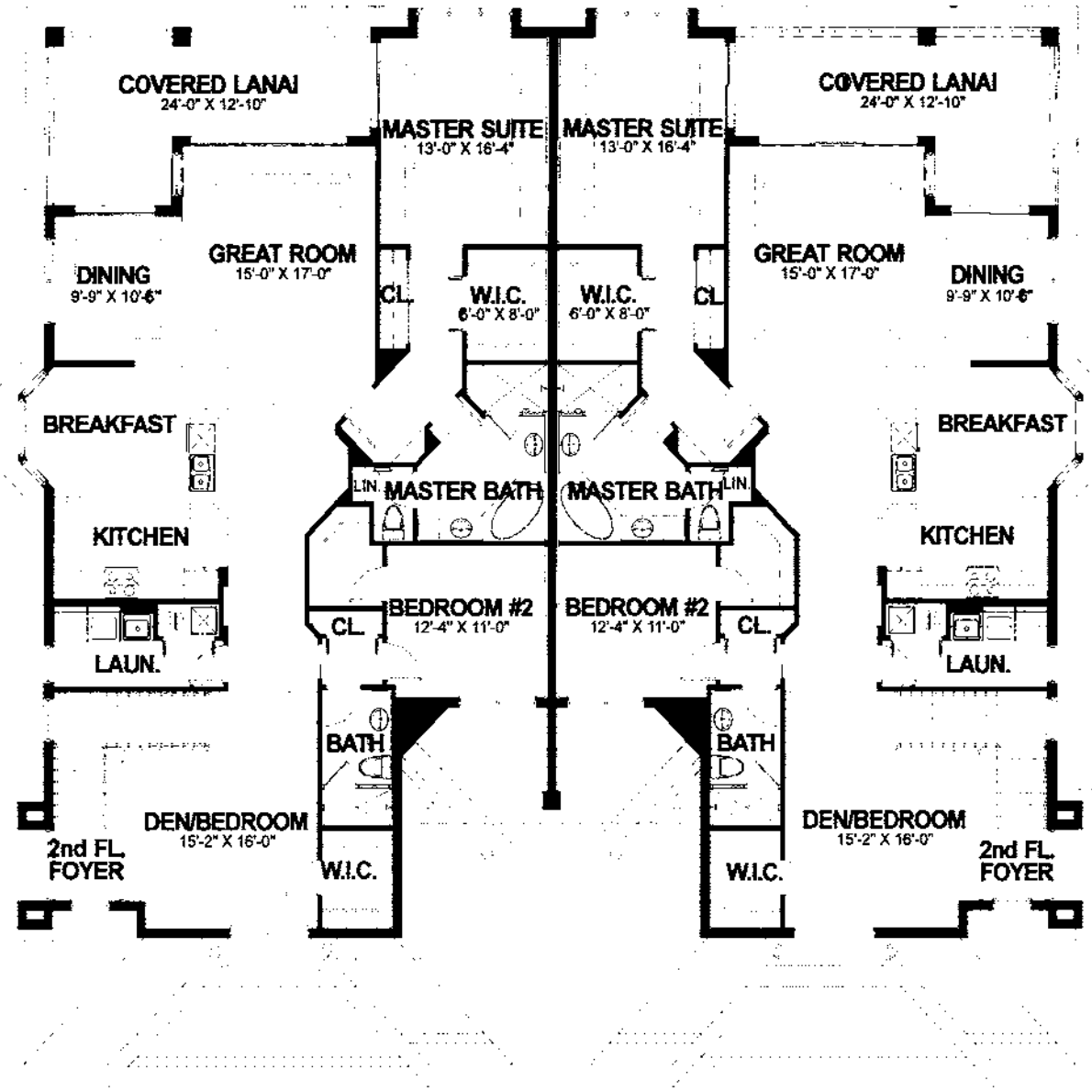
Pre-wiring for telephone and cable television in all bedroom and living areas

Pre-wiring for ceiling fans in bedrooms and living areas

Decorator rocker switches throughout the home

1,761	Sq. Ft. Under Air
244	Sq. Ft. Lanai
353	Sq. Ft. Garage
2,358	Sq. Ft. Total

ORAL REPRESENTATIONS CANNOT BE RELIED UPON AS CORRECTLY STATING REPRESENTATIONS OF THE DEVELOPER. FOR CORRECT REPRESENTATIONS, MAKE REFERENCE TO THIS BROCHURE AND TO THE DOCUMENTS REQUIRED BY SECTION 718.503, FLORIDA STATUTES, TO BE FURNISHED BY A DEVELOPER TO A BUYER OR LESSEE.



STRATFORD (Second Floor Plan)

Kitchens

Custom built European Cabinetry and countertops with under-cabinet lighting and rollout pan drawers

Designer White on White Package including:

- Dishwasher
- Microwave Oven
- Range with Self-Cleaning Oven
- Garbage Disposal
- Full size Washer and Dryer
- Refrigerator

Breakfast nook

8" Ceramic tile floor in your choice of color

Kohler Cast Iron Sink

Bathrooms

8" Ceramic tile floor in your choice of color

Custom built vanities with cultured marble tops and bowls

Vanity Mirror with studio lights

Mirrored Medicine cabinets

Contemporary separate shower with glass shower enclosure in Master bath

Construction & Exterior Finishes

Sturdy, solid concrete block construction

Durable low-maintenance stucco finish

White finish aluminum tint glass windows with locks and screens

Attractive nail-on color-thru cement "Lifetile" roof

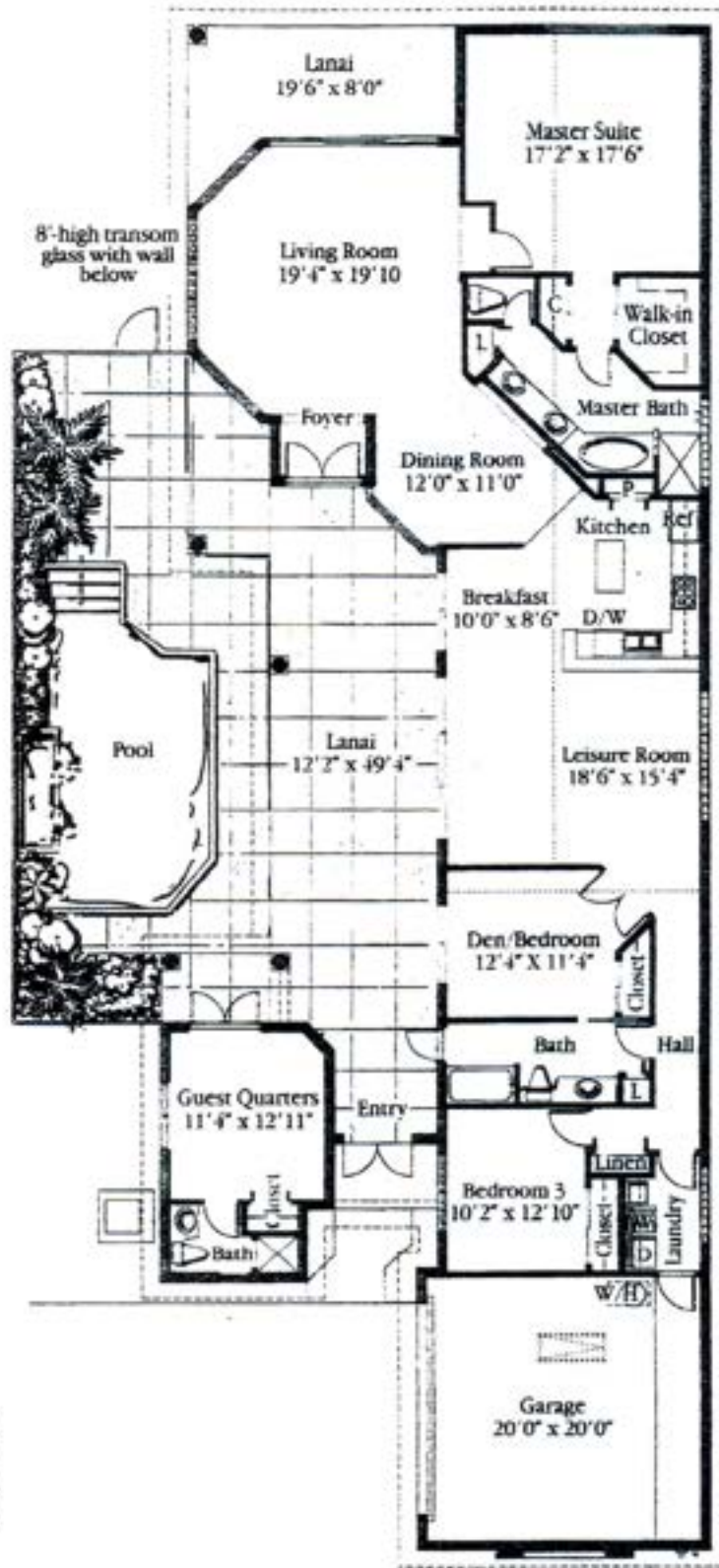
Screen enclosed terraces with acrylic topping

Single car garage with hurricane rated garage door with golf cart storage and openers

Interlocking Paver Driveway

Social Membership in Clubhouse

2,111	Sq. Ft. Under Air
244	Sq. Ft. Lanai
317	Sq. Ft. Garage
2,672	Sq. Ft. Total



<i>Square Footage</i>	
Living Area	
Under A/C	2634 Ft.
Lanai	830 Sq. Ft.
Garage	441 Sq. Ft.
TOTAL	3905 Sq. Ft.

Kensington Golf & Country Club
 2700 Pine Ridge Road (one mile east of Airport Road), Naples, Florida 34109.
 Phone (941) 649-5699 or 1-800-216-1845.

All dimensions and specifications are approximate and subject to change without notice. Square footage is based on exterior wall dimensions. Seller reserves the right to make changes in the materials, appliances, or equipment. Any substituted materials, appliances, or equipment shall be of equivalent or better quality. Some restrictions

