

## Floor Plans

These floor plans have been assembled as a resource for you. They may not be inclusive of every home in the community.

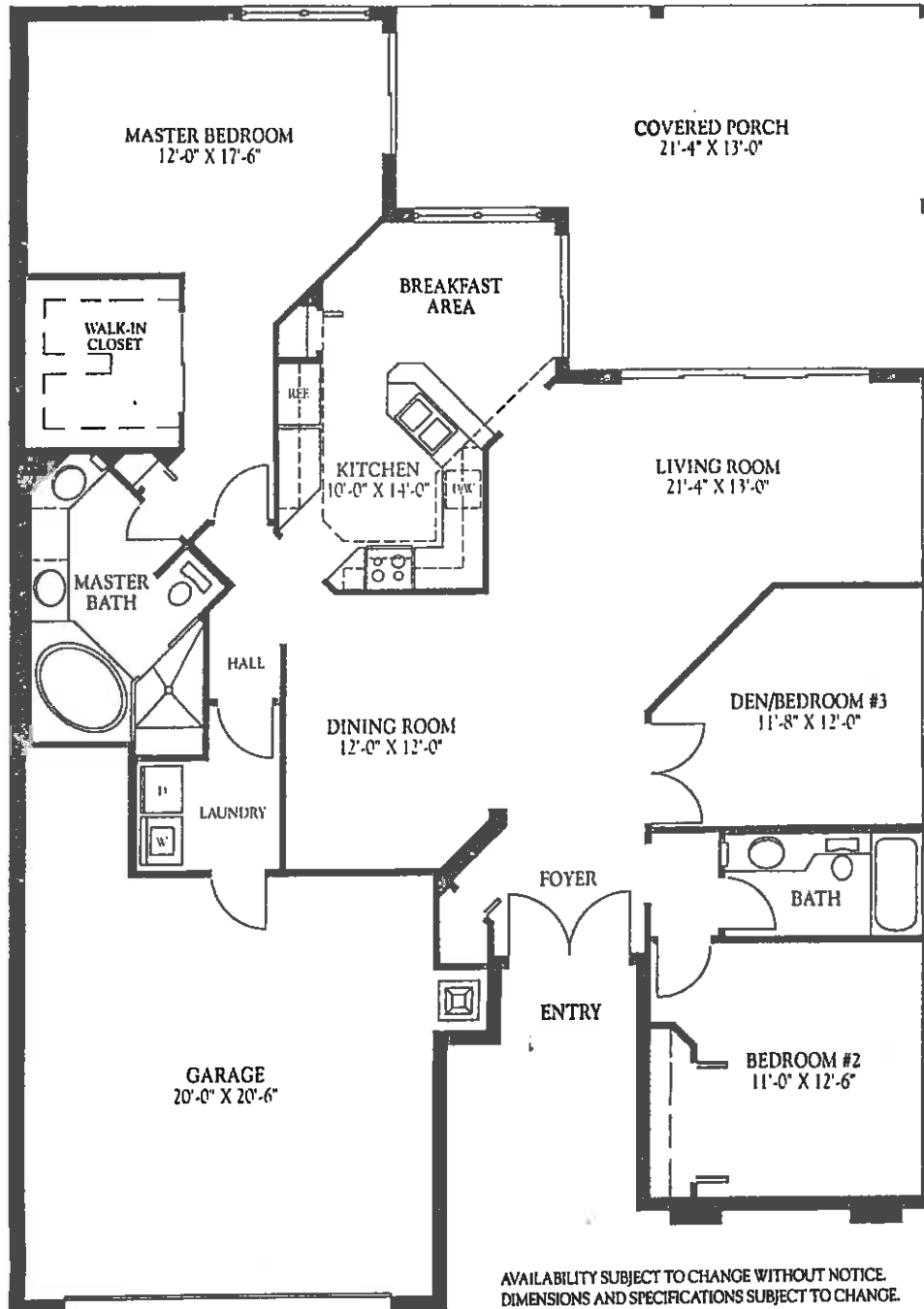
Please note that over time, owners may make modifications to spaces that may not be captured in these original floor plans.

Renderings are not a guarantee of space measurement. Interested parties should verify through their own secured services.

# STORRINGTON PLACE HASTINGS

## HASTINGS

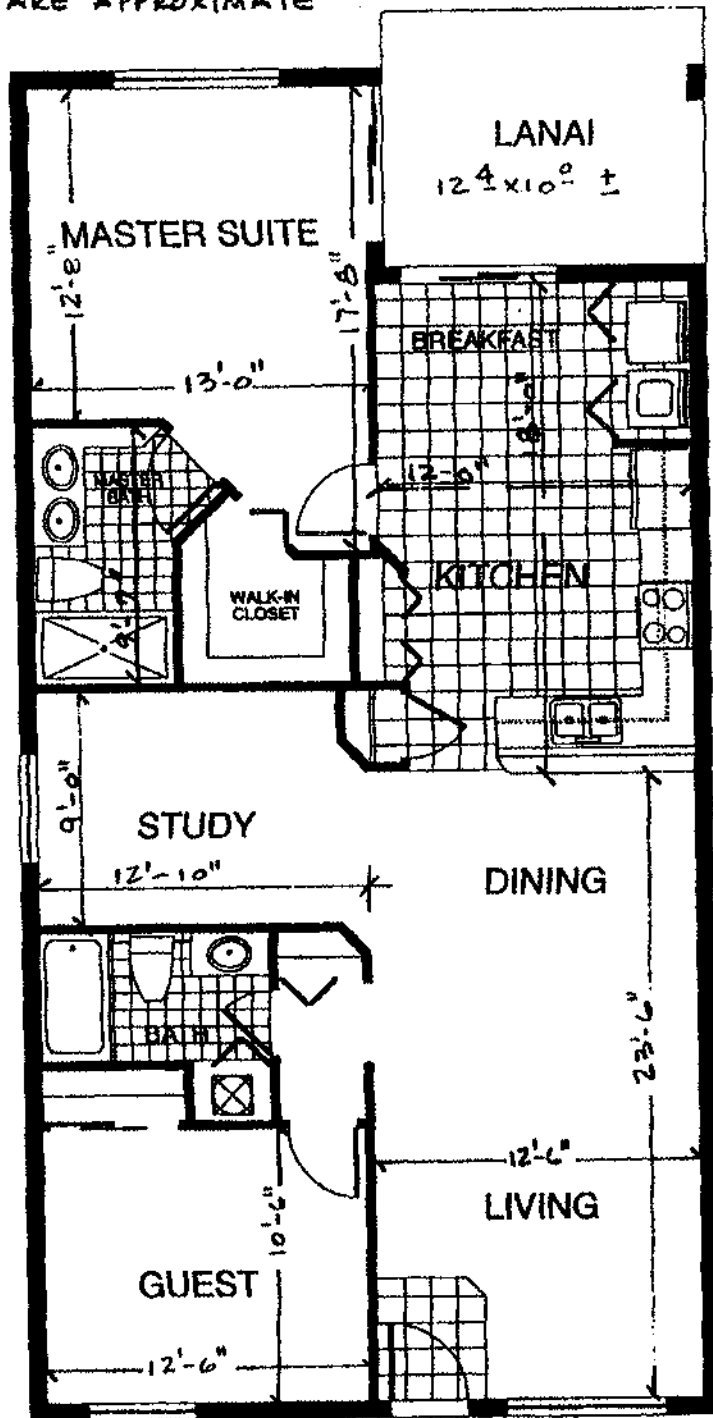
Living Area	1777 Sq.Ft.
Garage	489 Sq.Ft.
Porch	415 Sq.Ft.
Entry	24 Sq.Ft.
<b>TOTAL</b>	<b>2,705 Sq.Ft.</b>



AVAILABILITY SUBJECT TO CHANGE WITHOUT NOTICE.  
DIMENSIONS AND SPECIFICATIONS SUBJECT TO CHANGE.

BERMUDA BAY ANGUILLA

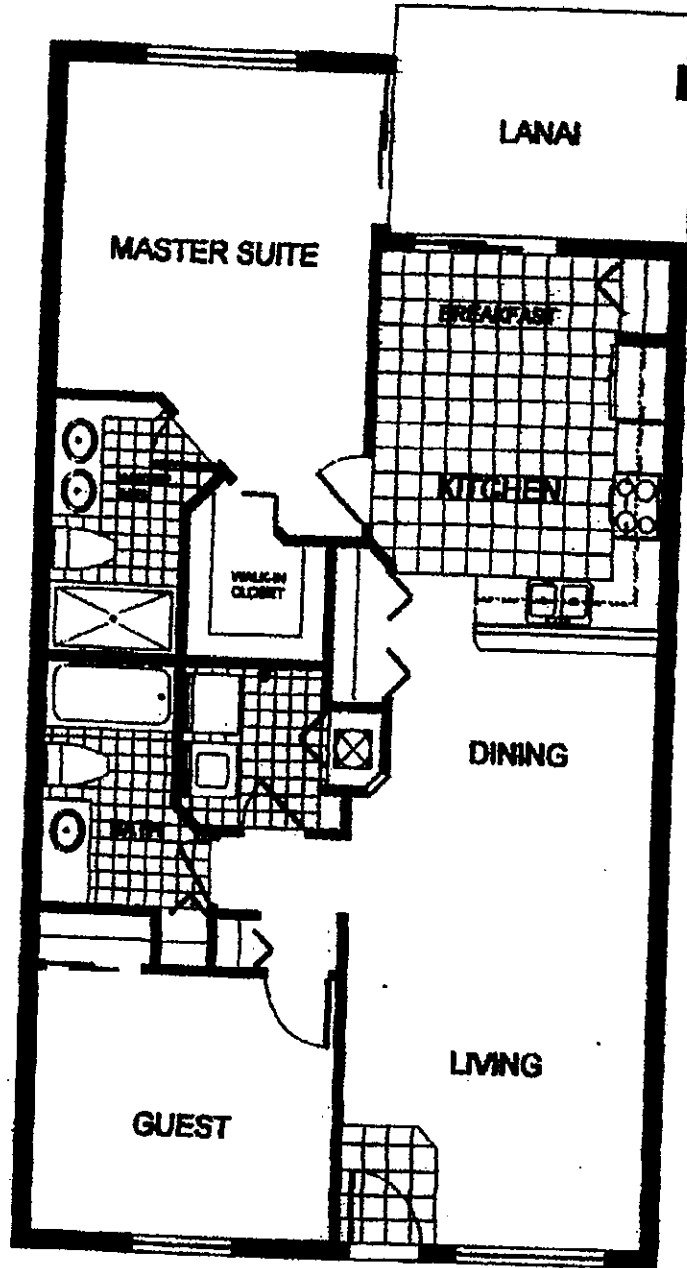
ALL DIMENSIONS ARE APPROXIMATE



**ANGUILLA**  
**1377 S.F.**



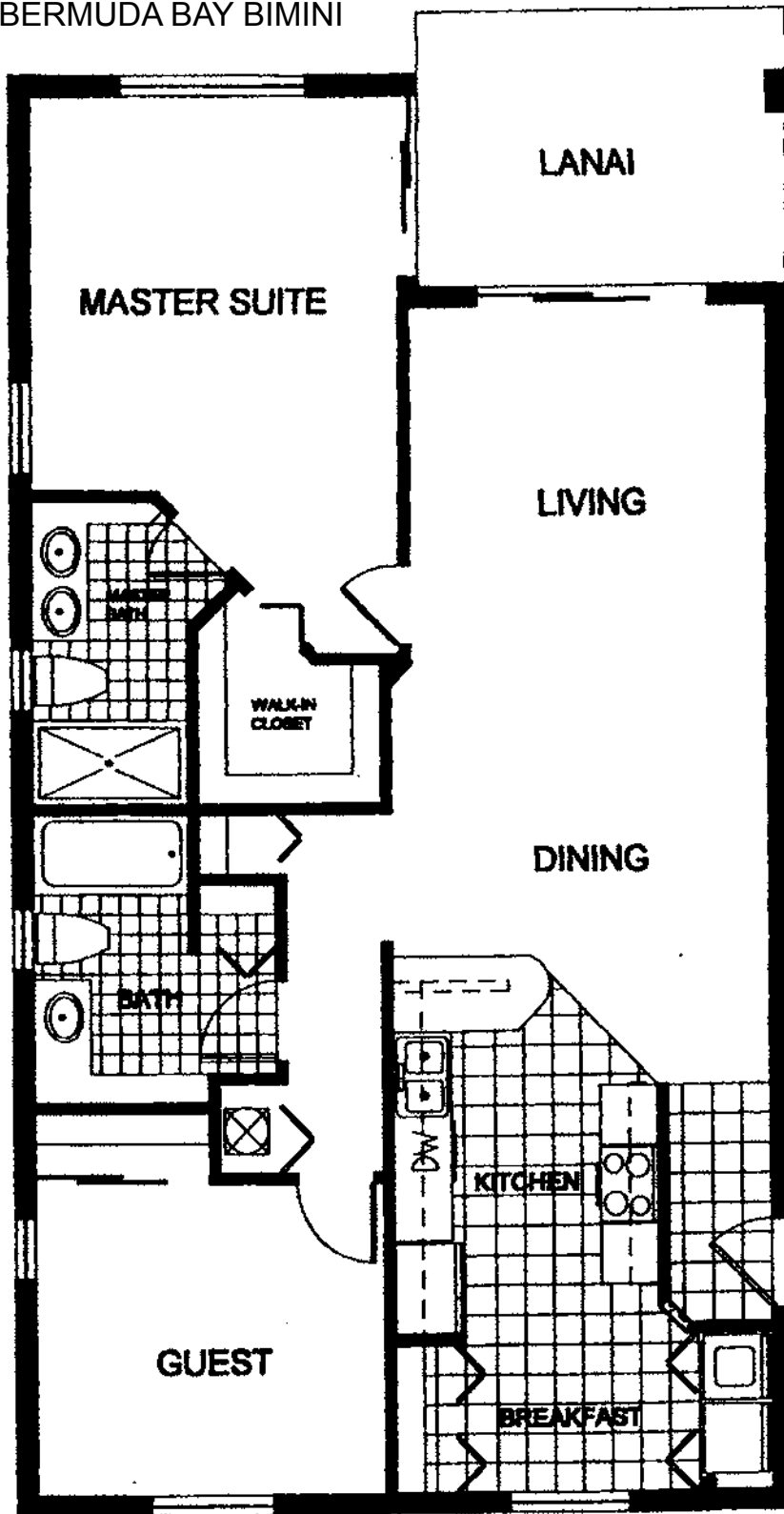
BERMUDA BAY ARUBA



ARUBA  
1273 S.F.

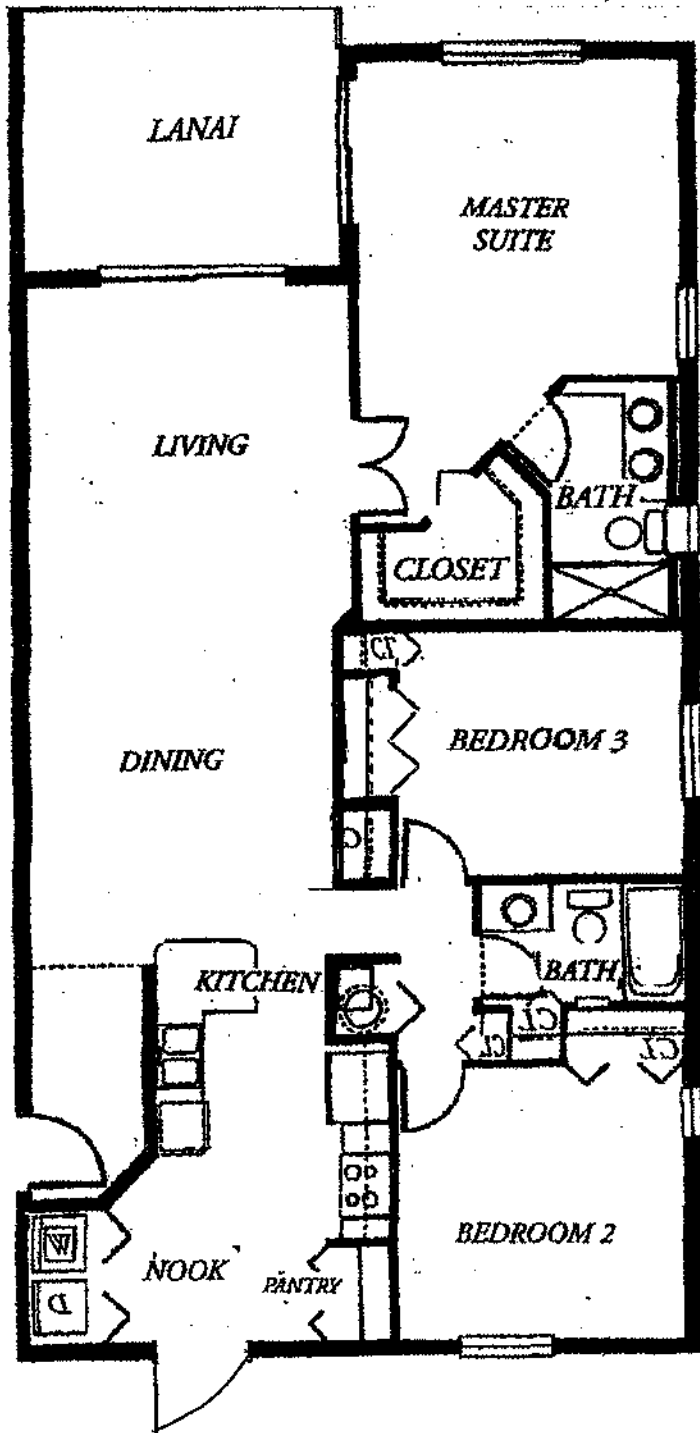


BERMUDA BAY BIMINI



BIMINI  
1273 S.F.





**MARTINIQUE**  
**3 BR/2 BA**  
**1613 Sq. Ft.**



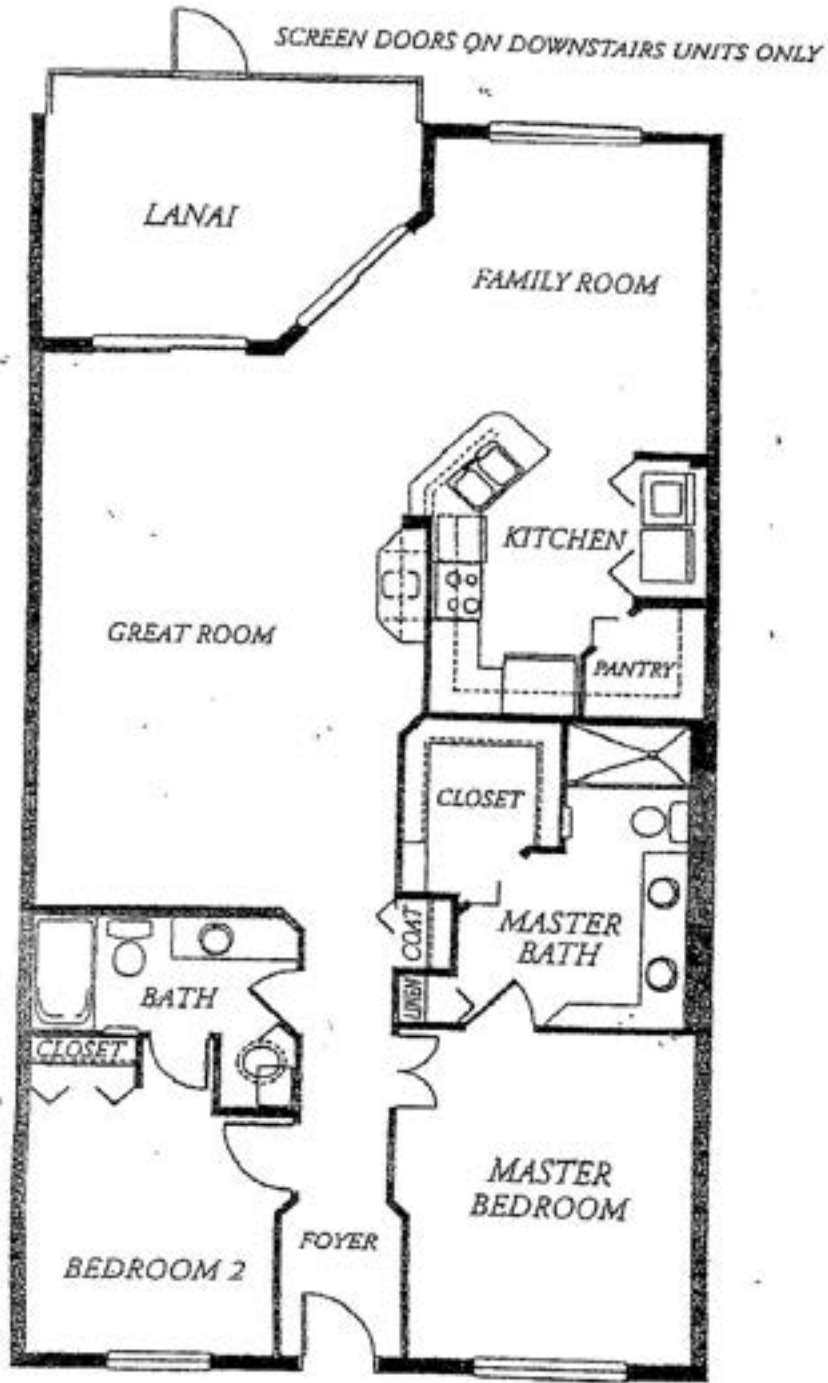
BERMUDA BAY MARTINIQUE



MARTINIQUE  
2 BR/ 2BA/S  
1613 Sq. Ft.

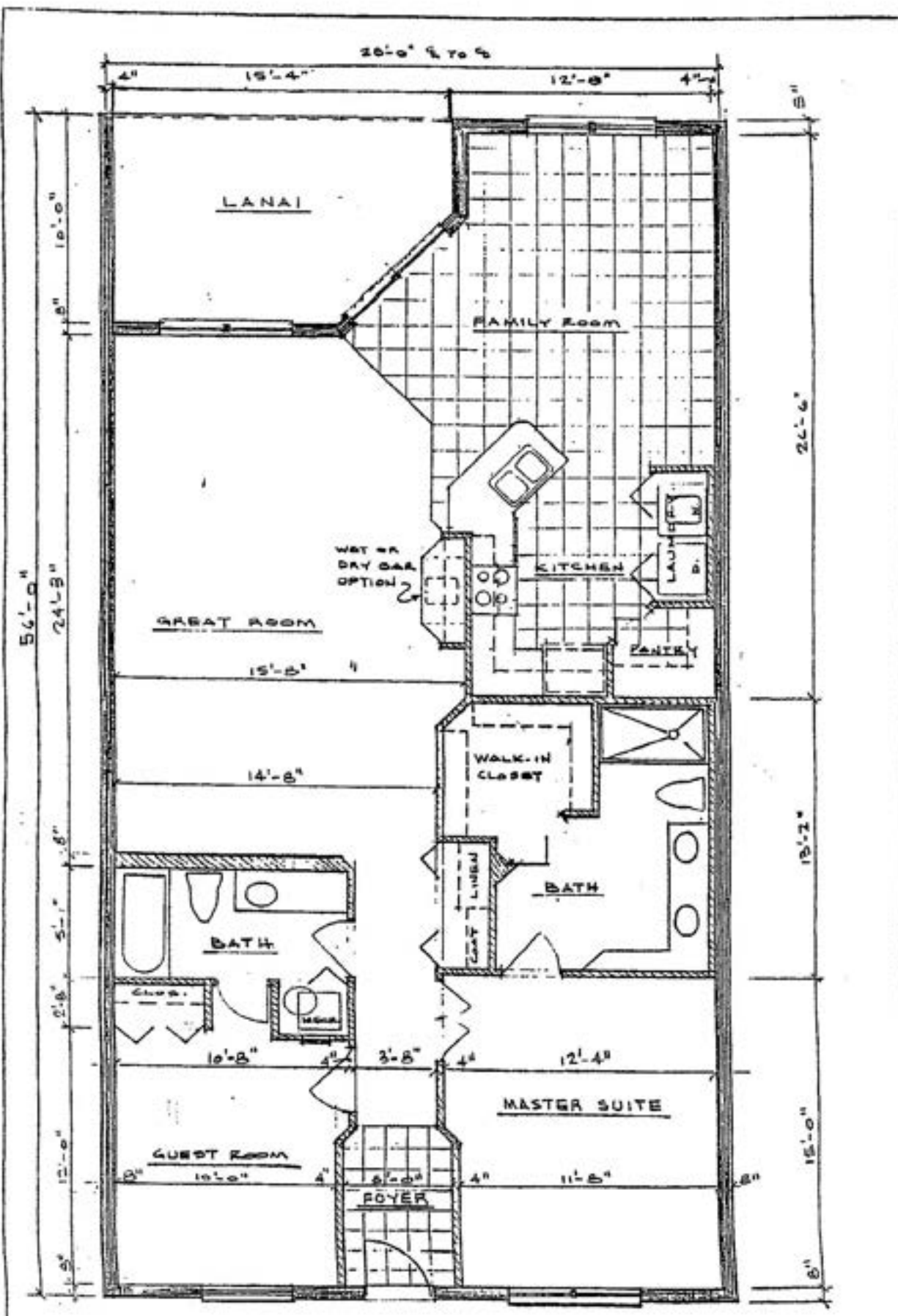


BERMUDA BAY NASSAU



**NASSAU**  
**2 BR/2 BA/Family Room**  
**1598 Sq. Ft.**





NASSAU - 2/2/FAM.  
 1508 SQ. FT.

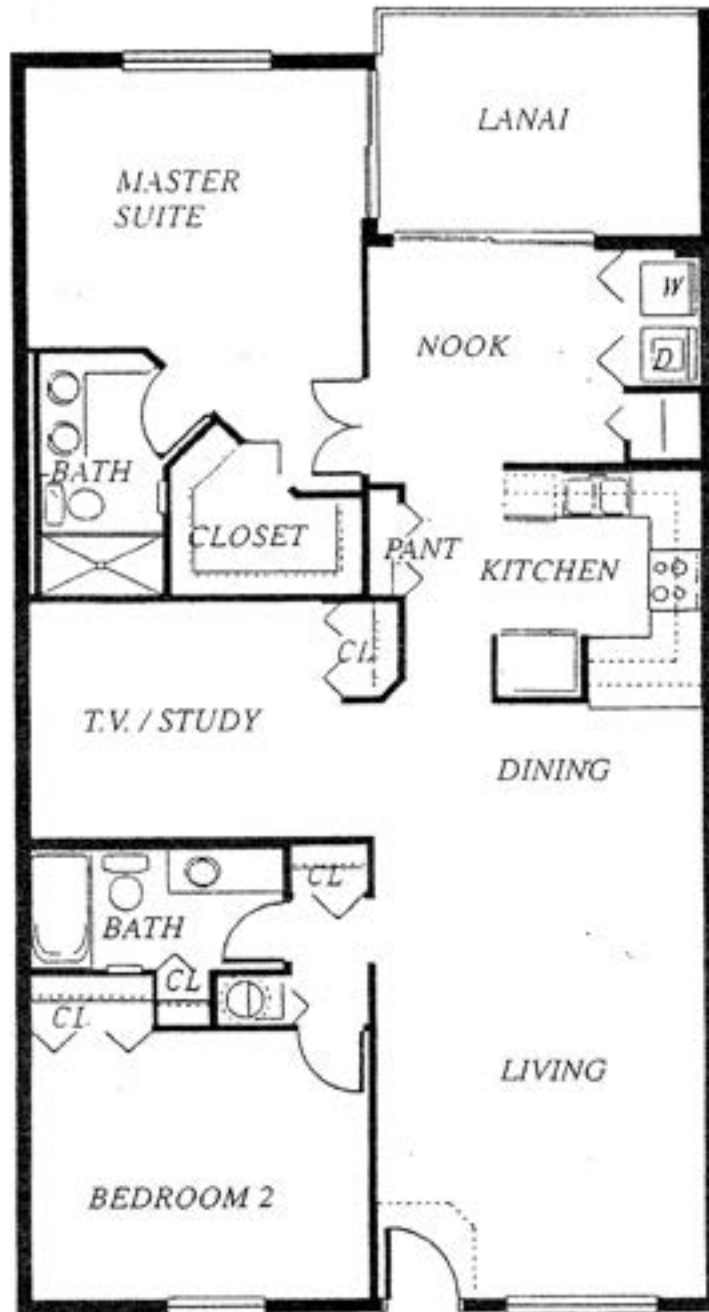
BERMUDA BAY ST CROIX



ST. CROIX  
2 BR/ 2BA  
1480 Sq. Ft.

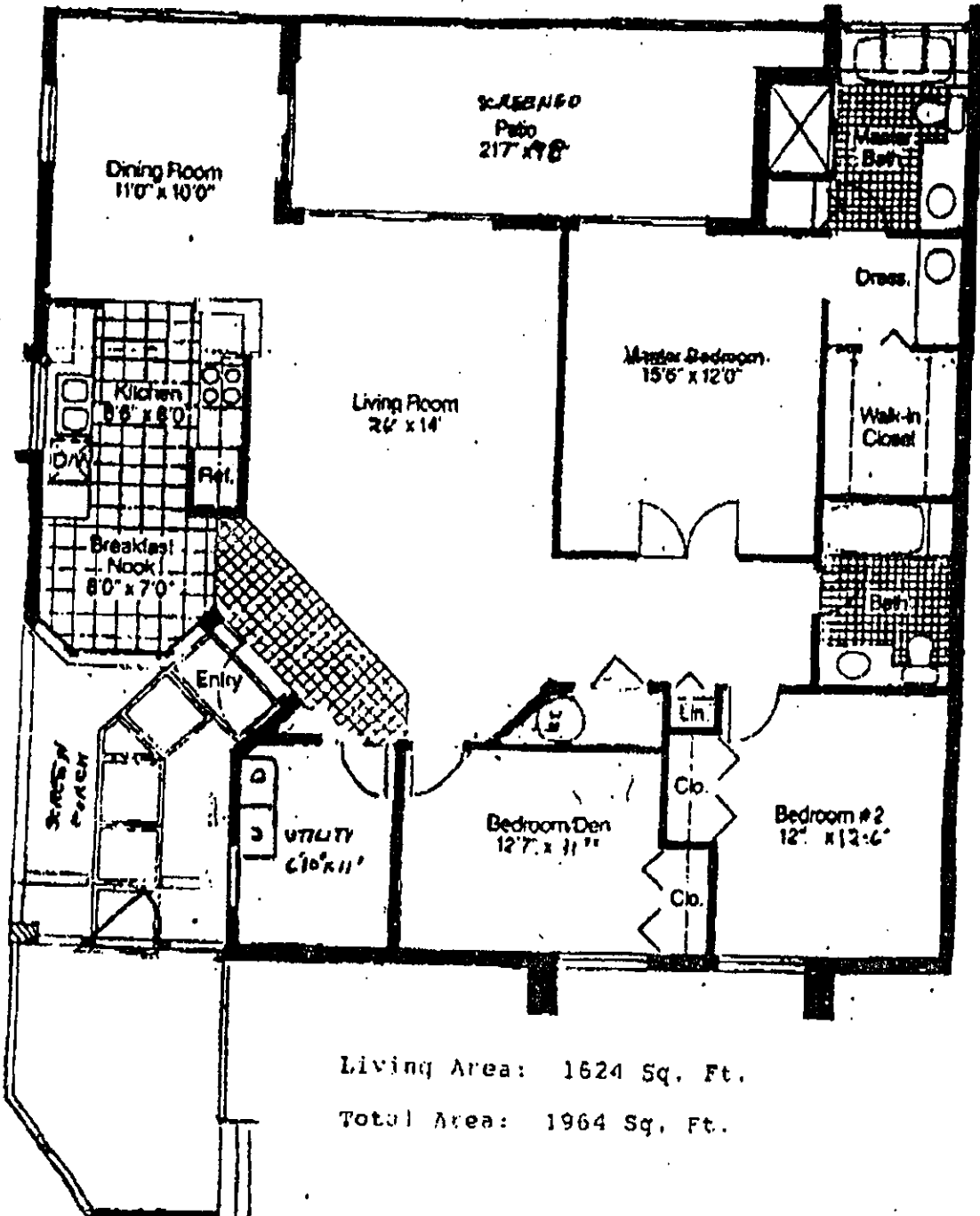


BERMUDA BAY ST MARTIN



**ST. MARTIN**  
**2 BR/ 2BA/S**  
**1538 Sq. Ft.**

in  
**BUTTONWOOD BAY FOREST**  
 Naples, Florida

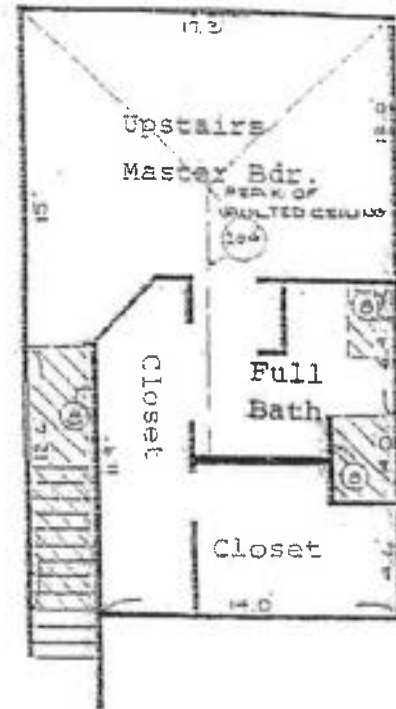
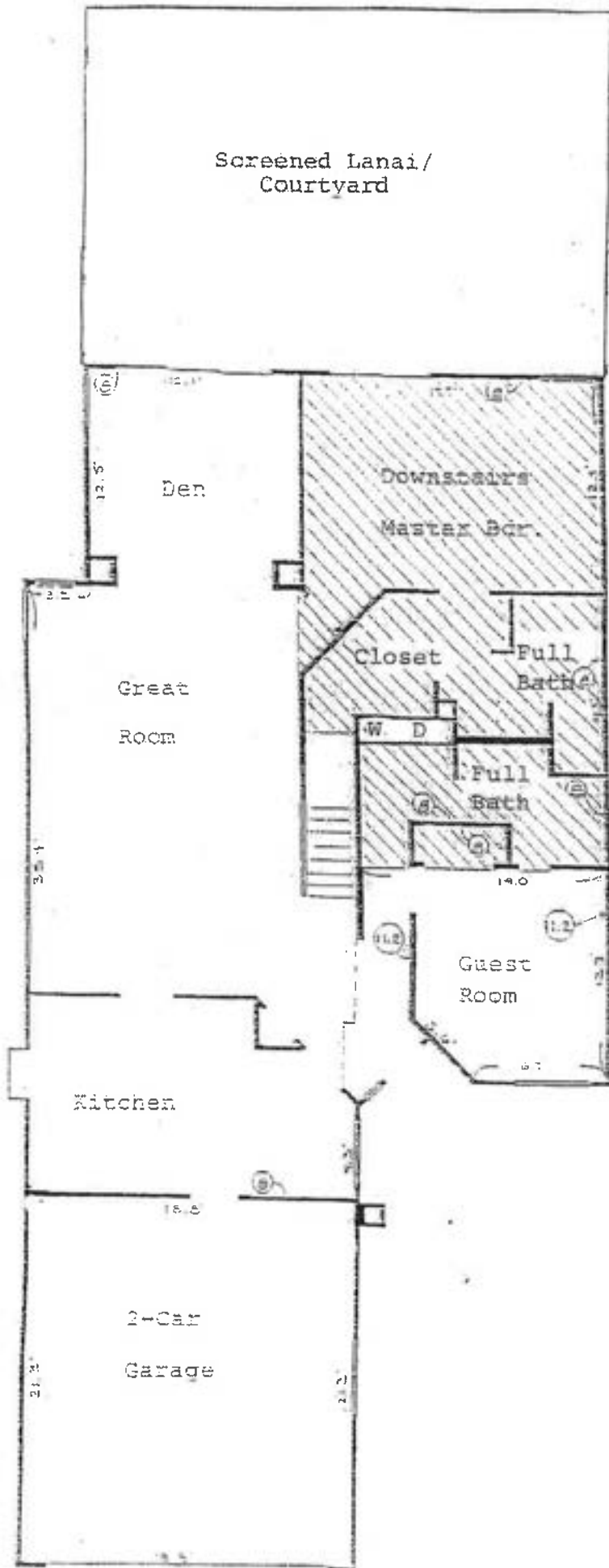


Living Area: 1624 Sq. Ft.

Total Area: 1964 Sq. Ft.

This floor plan should not be relied upon as an "as built" configuration. Substantial customization of the design may have been performed during construction. Measurements shown hereon, while believed to be accurate, are not guaranteed and therefore, should not be relied upon.

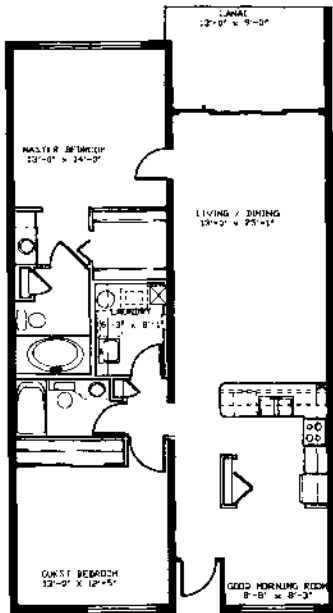
# CARINOSA VILLAS



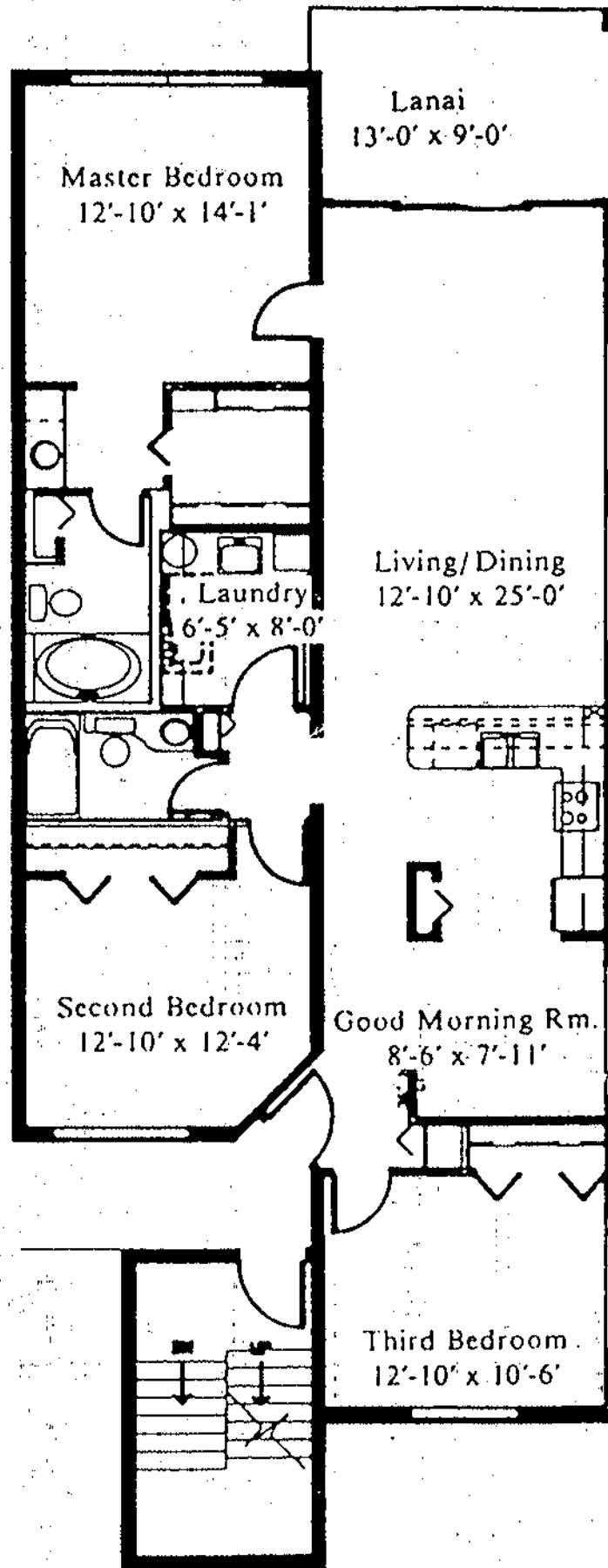
Living Area: 2002  
 Total Area: 3152

# NAPLES COVE

1 WC 2 BEDROOM UNIT  
1388 SQ FT

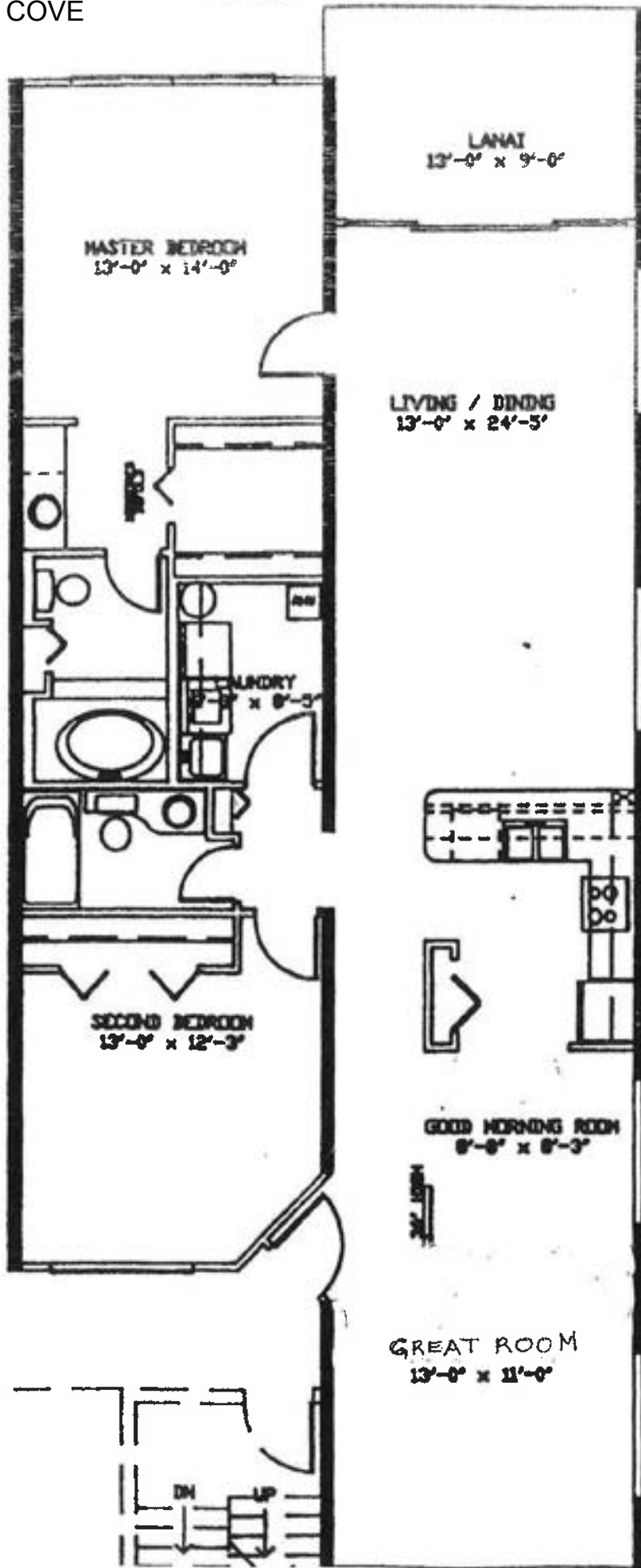


NAPLES COVE



NAPLES COVE

TYPICAL BUILDING PLAN  
1594 Sq. Ft.

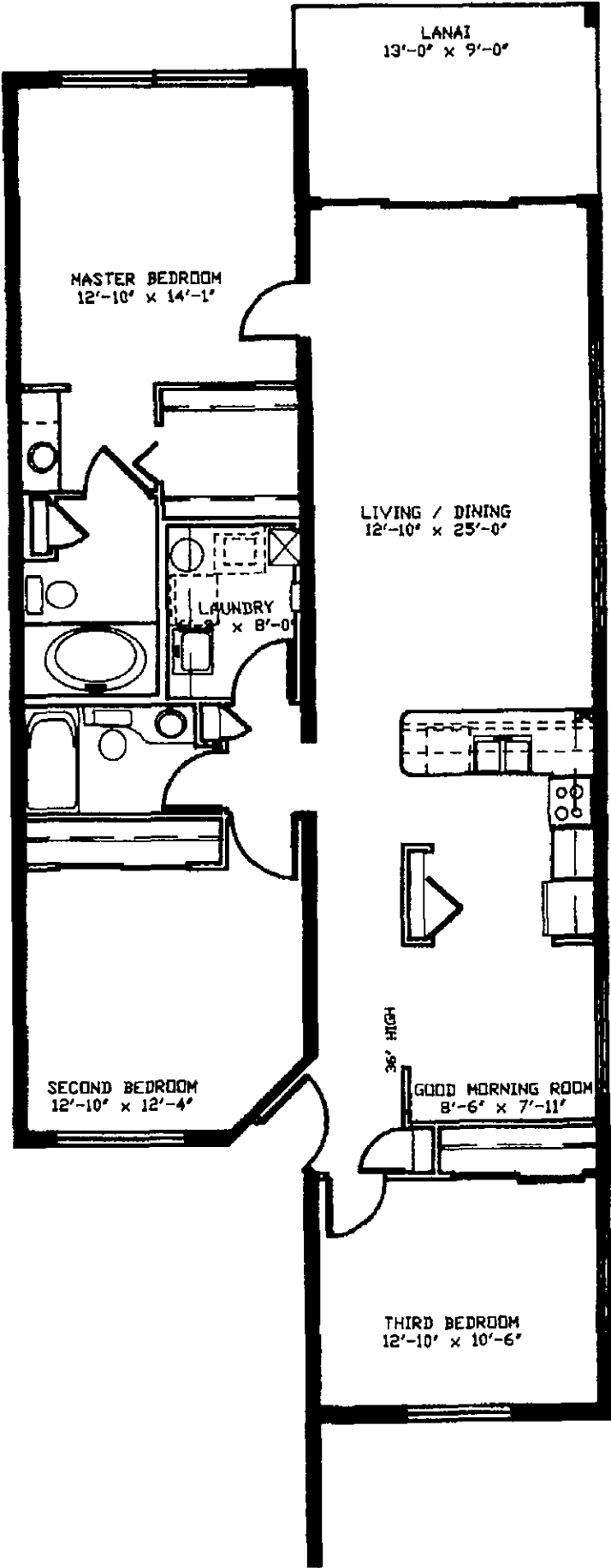


**NAPLES WALK**  
DRAWING PREPARED BY ANDREW C. CONLYN - ARCHITECT



NAPLES COVE

THREE BEDROOM UNIT  
1594 Sq. Ft.



# NAPLES WALK

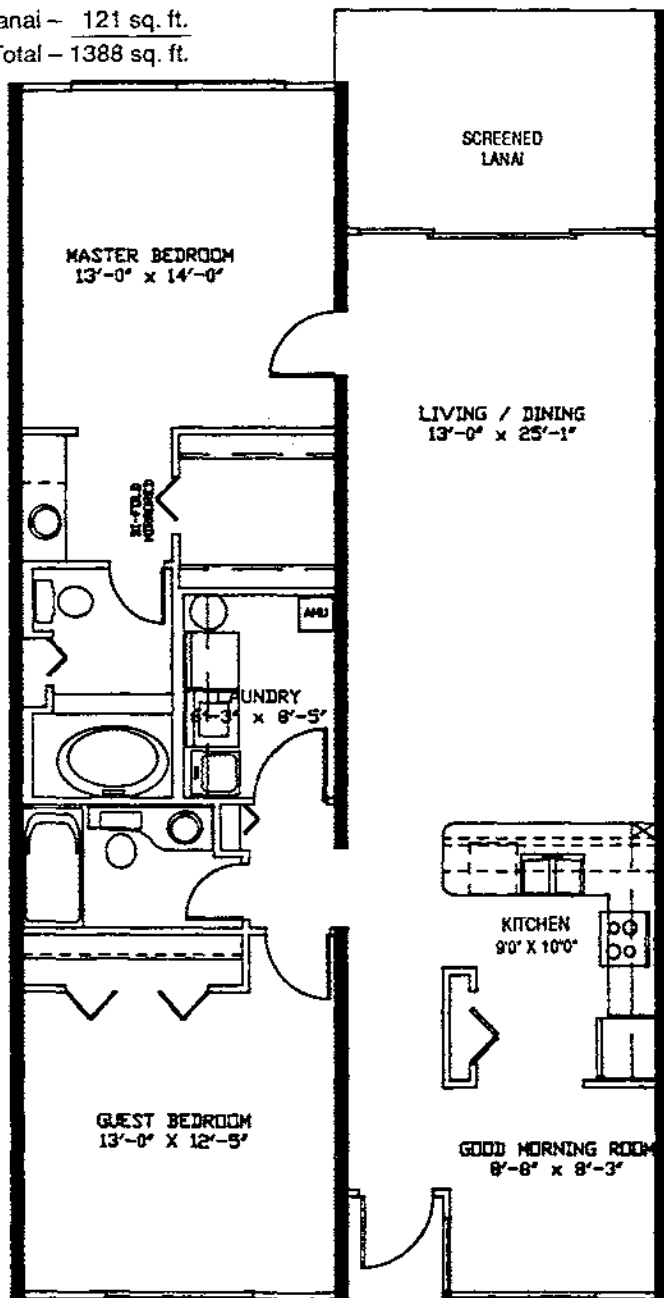
## NAPLES WALK

Two Bedroom Residence (Inside Units Only)  
Floors 1 - 6

Living space - 1267 sq. ft.

Lanai - 121 sq. ft.

Total - 1388 sq. ft.



• All dimensions are approximate

8/9/89

NAPLES WALK

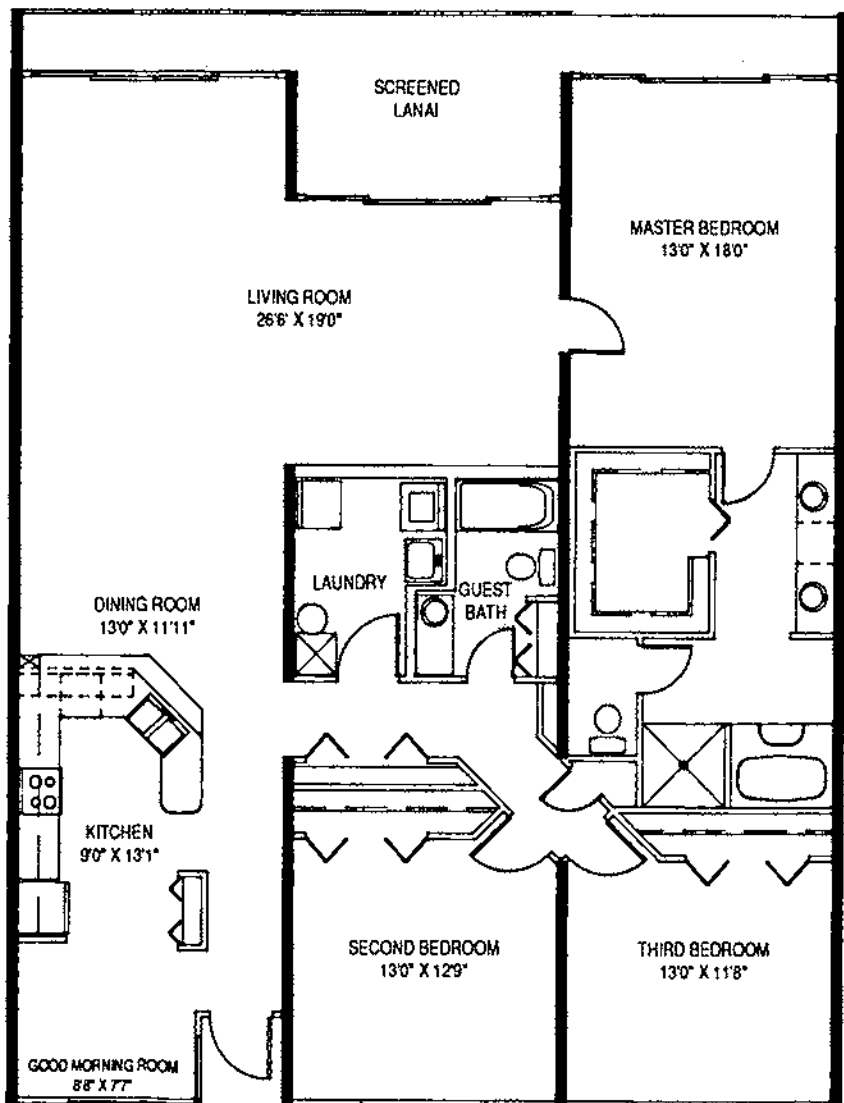
# NAPLES WALK

Interior Penthouse Residence  
Floor 7

Living space – 1951 sq. ft.

Lanai – 199 sq. ft.

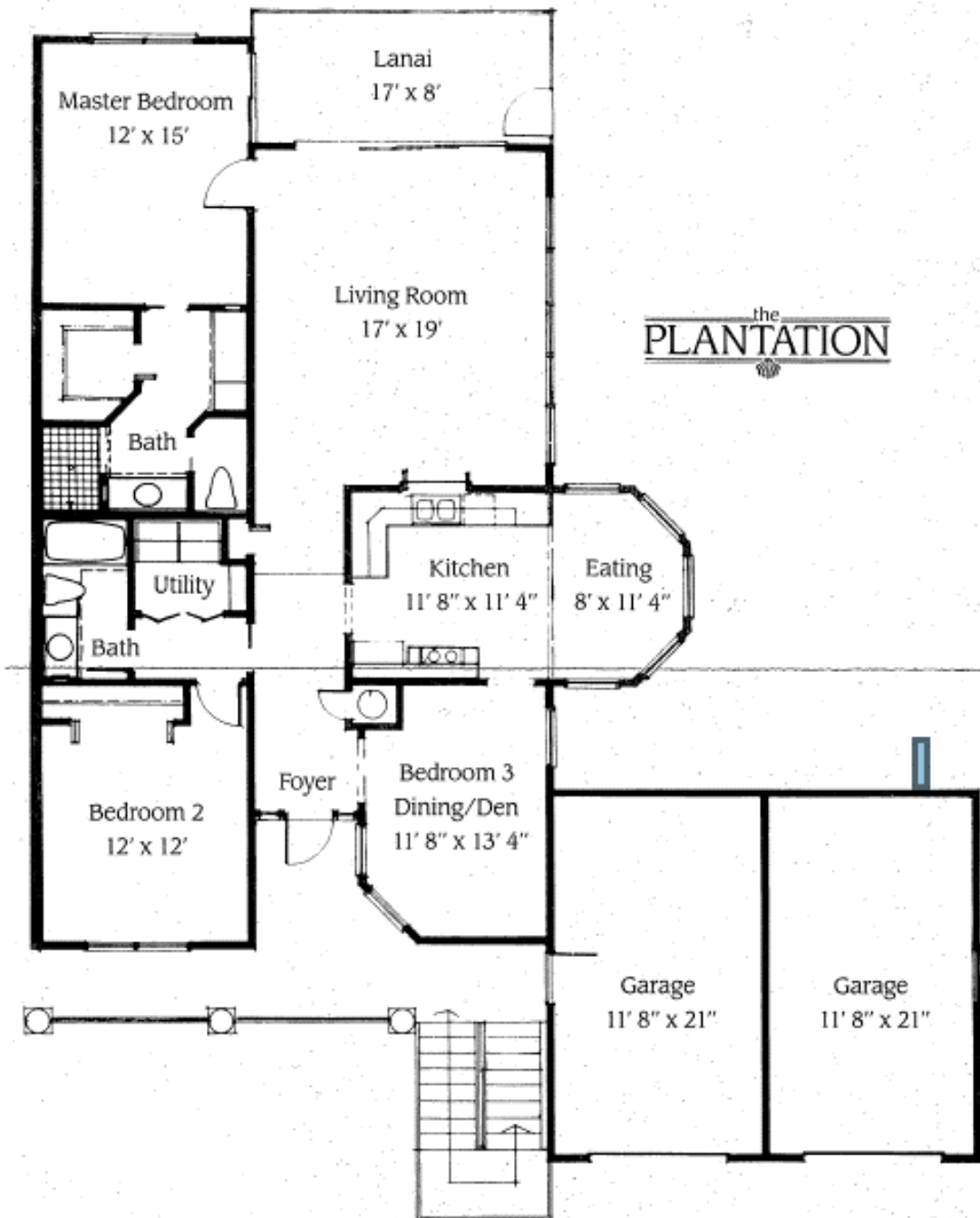
Total – 2150 sq. ft.



• All dimensions are approximate

5/11/89

# Floorplan PLANTATION



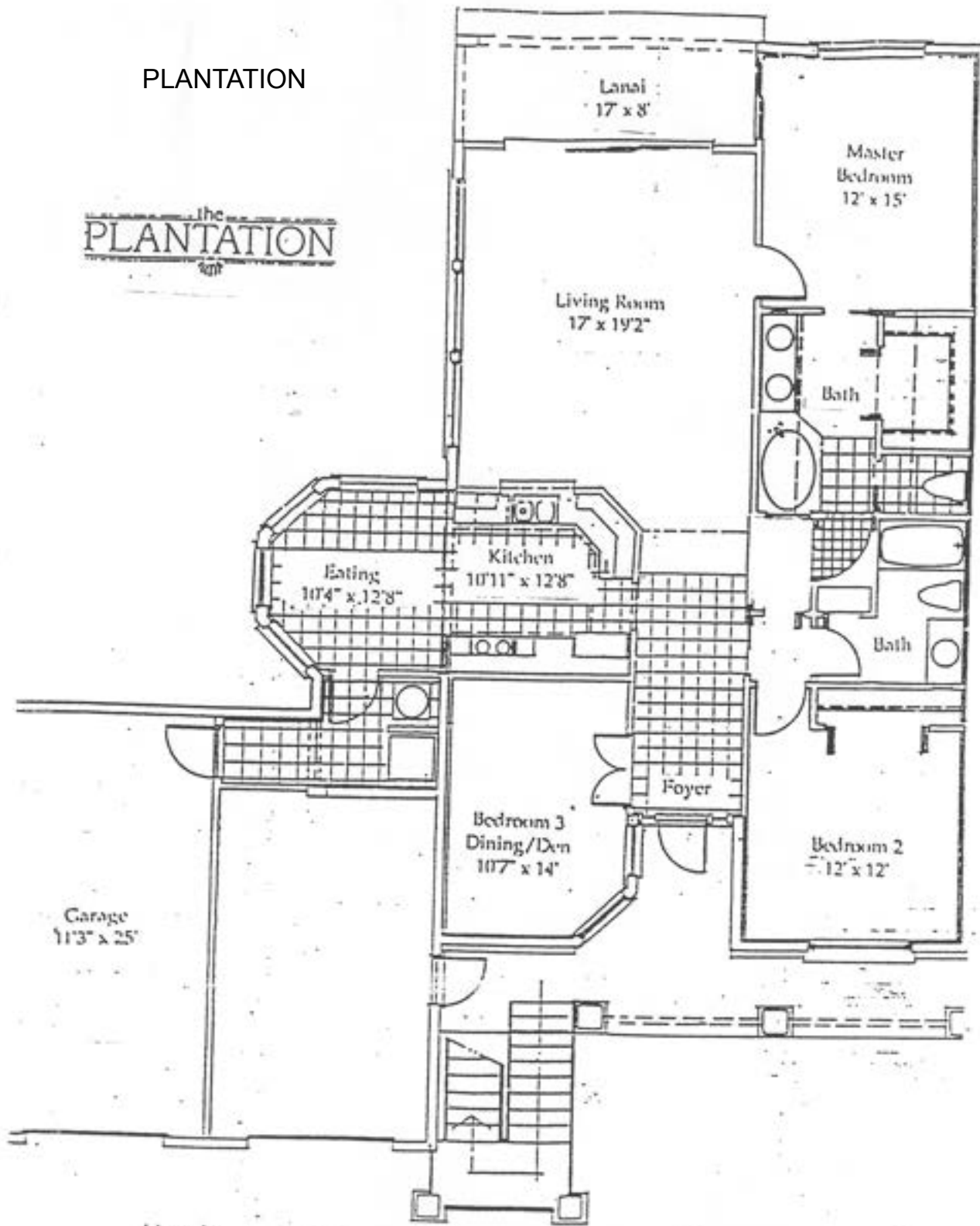
the  
**PLANTATION**

All dimensions and square footage are approximate and may vary slightly from the actual construction.

Living Area	1,512 sq. ft.
Lanai	133 sq. ft.
Garage	255 sq. ft.
<b>Total Area</b>	<b>1,900 sq. ft.</b>

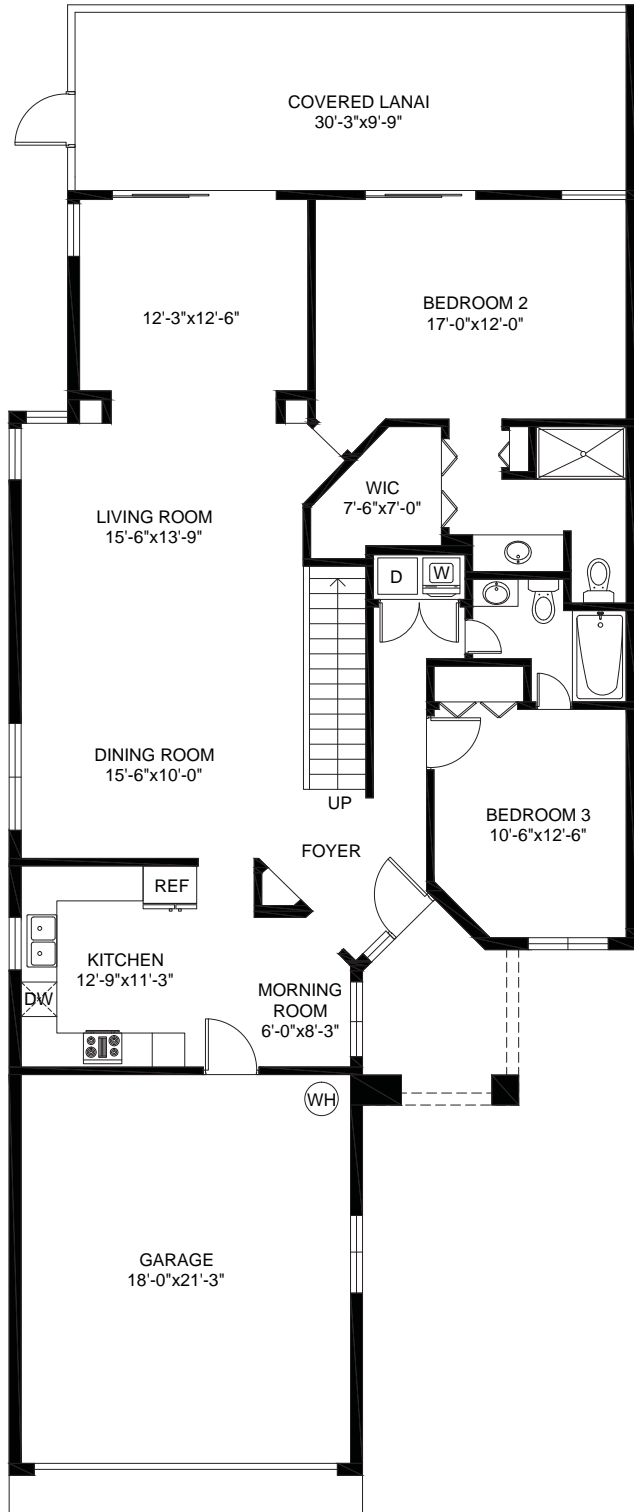
PLANTATION

The  
PLANTATION  
197

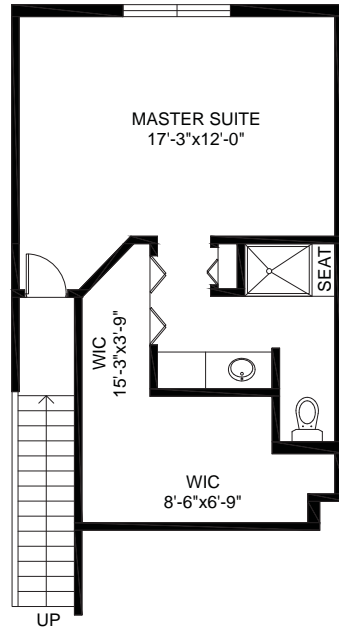


Upstairs		Downstairs
1,602 sq.ft.	Living Area	1,622 sq.ft.
136 sq.ft.	Lanai	136 sq.ft.
237 sq.ft.	Garage	282 sq.ft.
1,975 sq.ft.	Total Area	2,040 sq.ft.

# SANDY PINES MAJORCA



LOWER FLOOR PLAN



UPPER FLOOR PLAN

MAIN LIVING	1520	SQ.FT.
UPPER LEVEL	470	SQ.FT.
TOTAL UNDER AIR	1990	SQ.FT.
GARAGE	443	SQ.FT.
COVERED ENTRY	73	SQ.FT.
COVERED LANAI	307	SQ.FT.
TOTAL AREA	2813	SQ.FT.

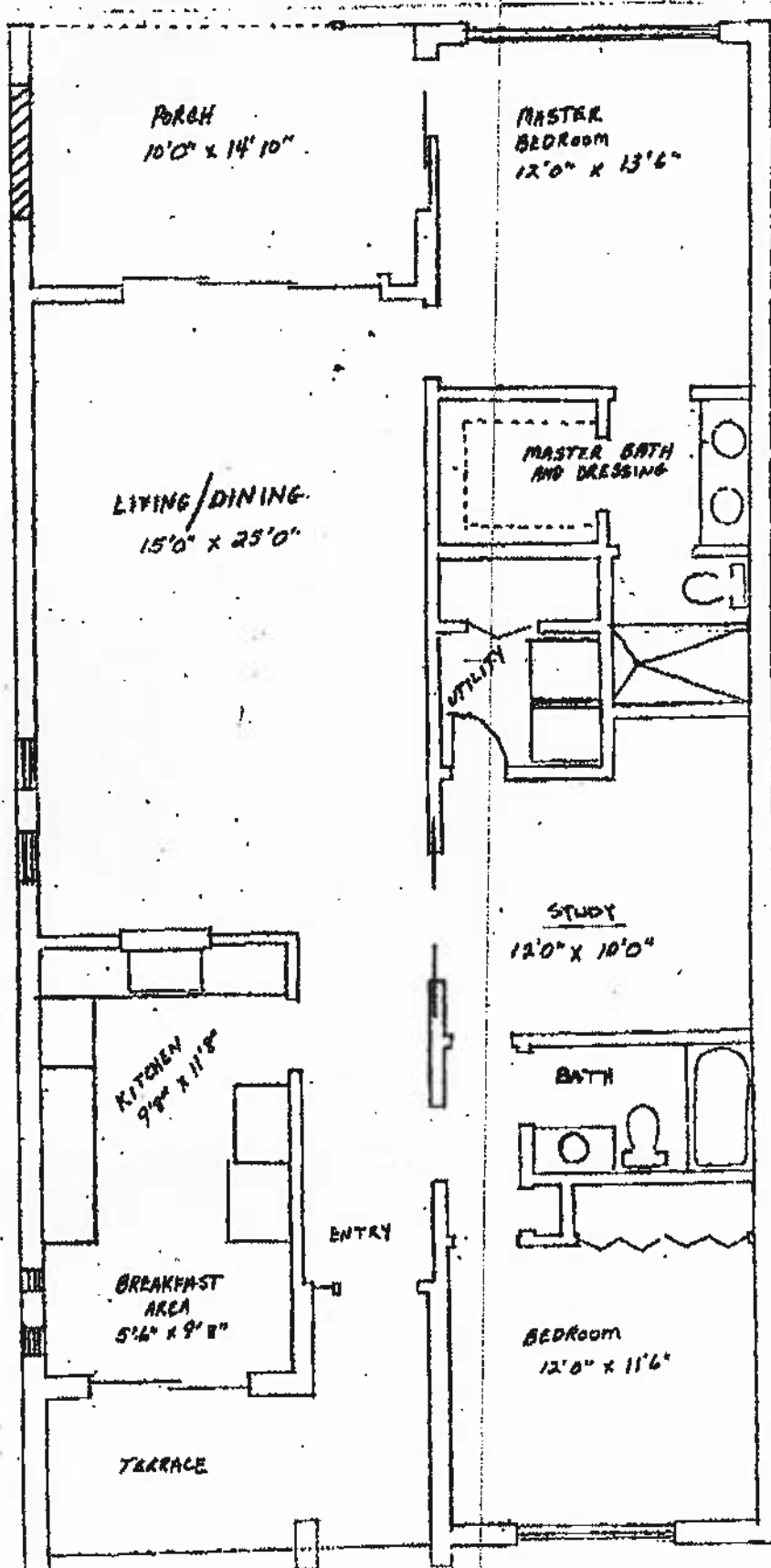
This floor plan including furniture, fixture measurements and dimensions are approximate and for illustrative purposes only. BoxBrownie.com gives no guarantee, warranty or representation as to the accuracy and layout. All enquiries must be directed to the agent, vendor or party representing this floor plan.

SANDY PINES

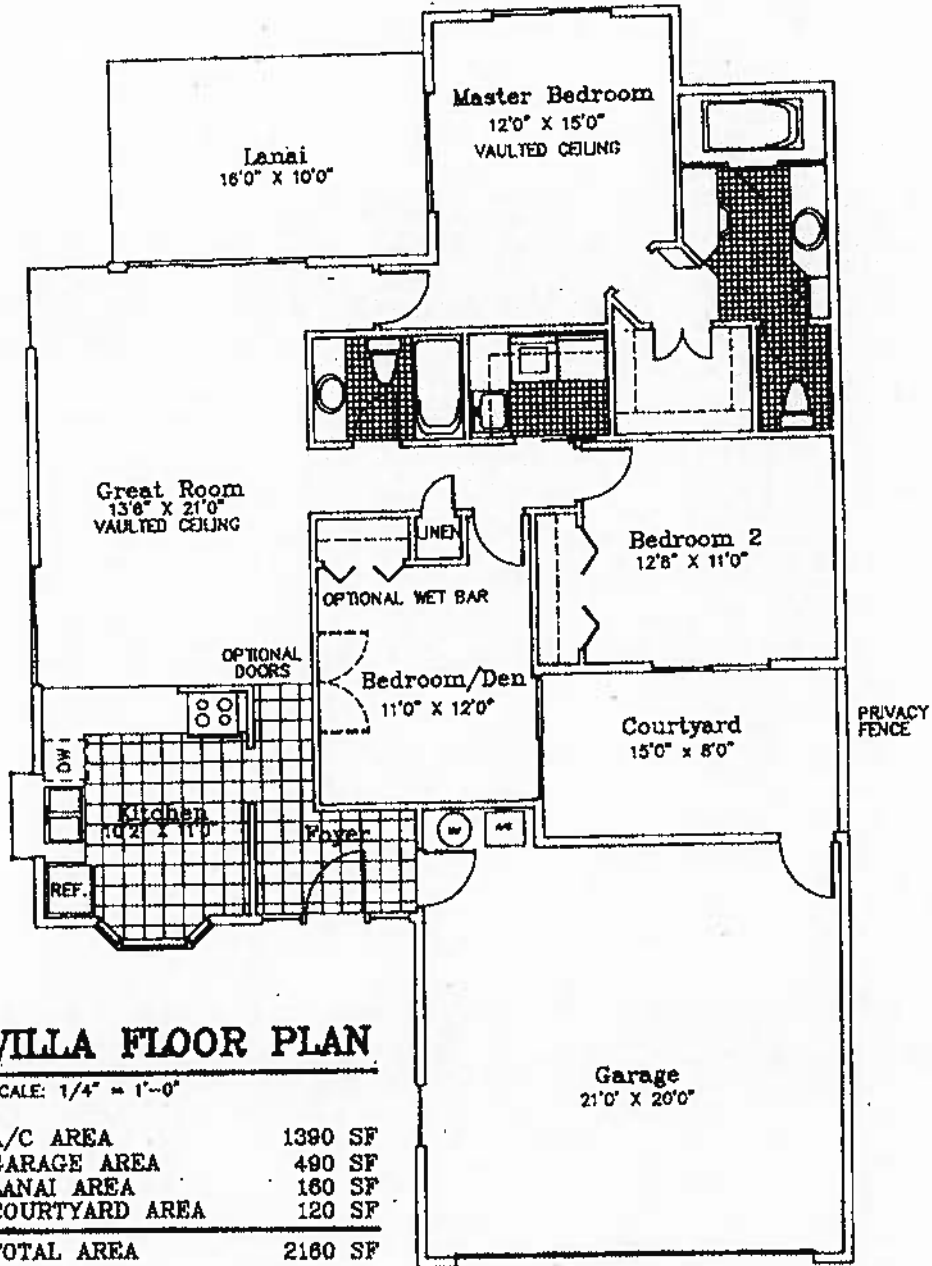
SANDY PINES  
of  
BAY FOREST

Floorplan  
2Bedroom + Den  
2Bathroom

Air-Conditioned  
area = 1,388 sq ft

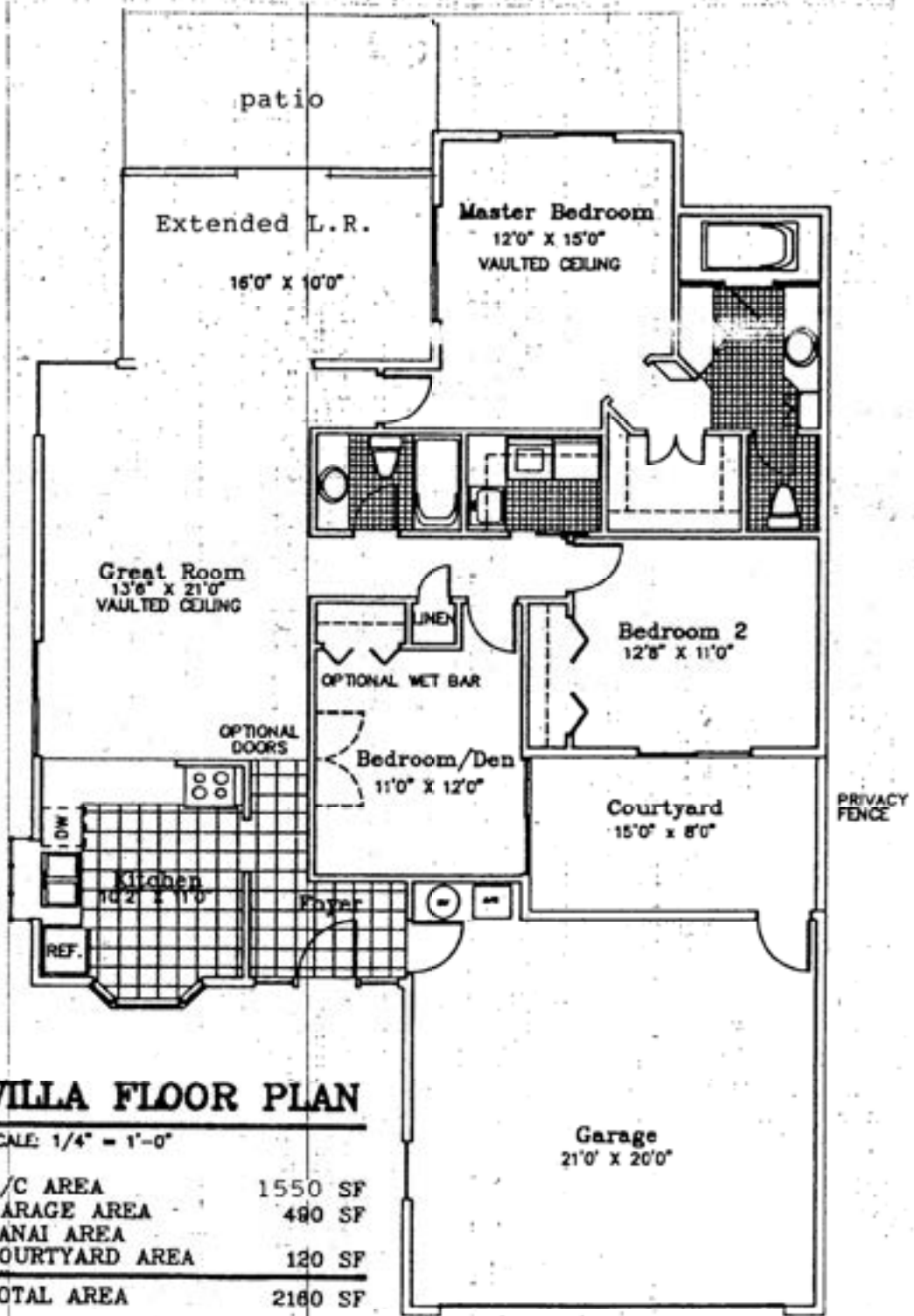


# SEA PINE VILLAS





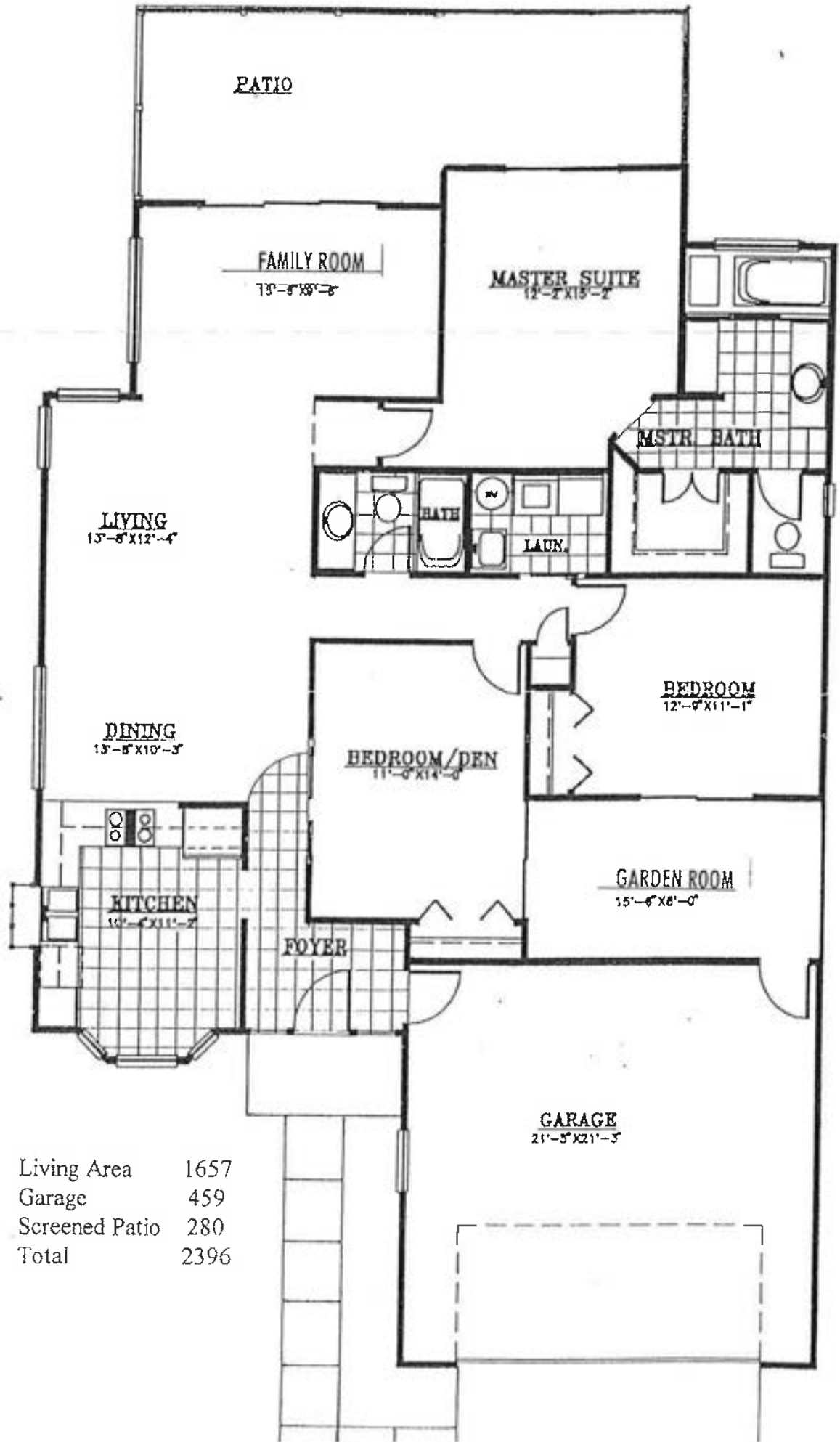
SEA PINES



**VILLA FLOOR PLAN**

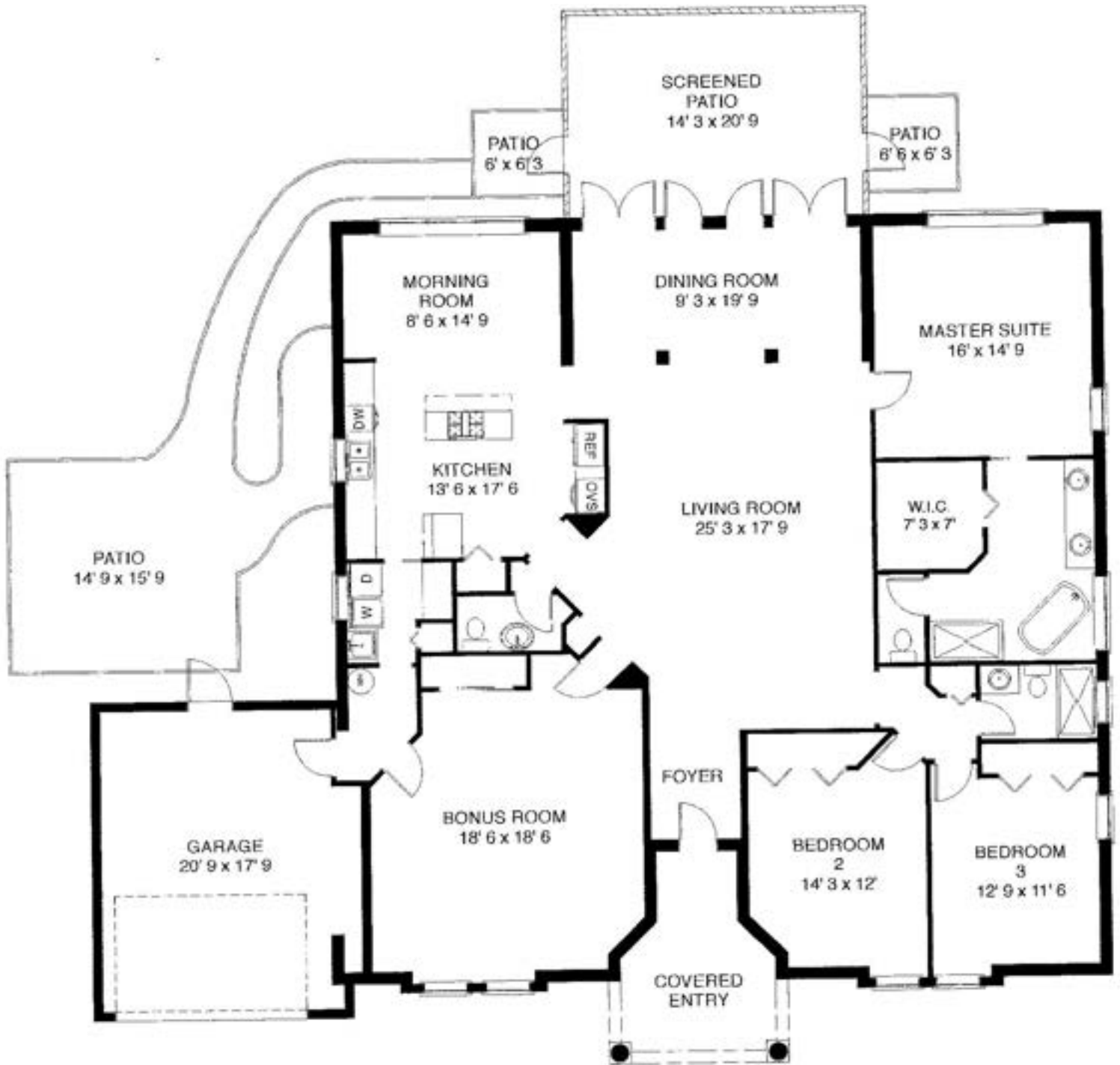
SCALE: 1/4" = 1'-0"

A/C AREA	1550 SF
GARAGE AREA	480 SF
LANAI AREA	
COURTYARD AREA	120 SF
<b>TOTAL AREA</b>	<b>2180 SF</b>



Living Area	1657
Garage	459
Screened Patio	280
Total	2396

# SEA PINES



TOTAL UNDER AIR	2715 sq. ft.
Garage	390 sq. ft.
Covered Entry	122 sq. ft.
<hr/>	
TOTAL UNDER ROOF	3227 sq. ft.
Screened Patio	294 sq. ft.
Patio	310 sq. ft.
<hr/>	
TOTAL AREA	3831 sq. ft.