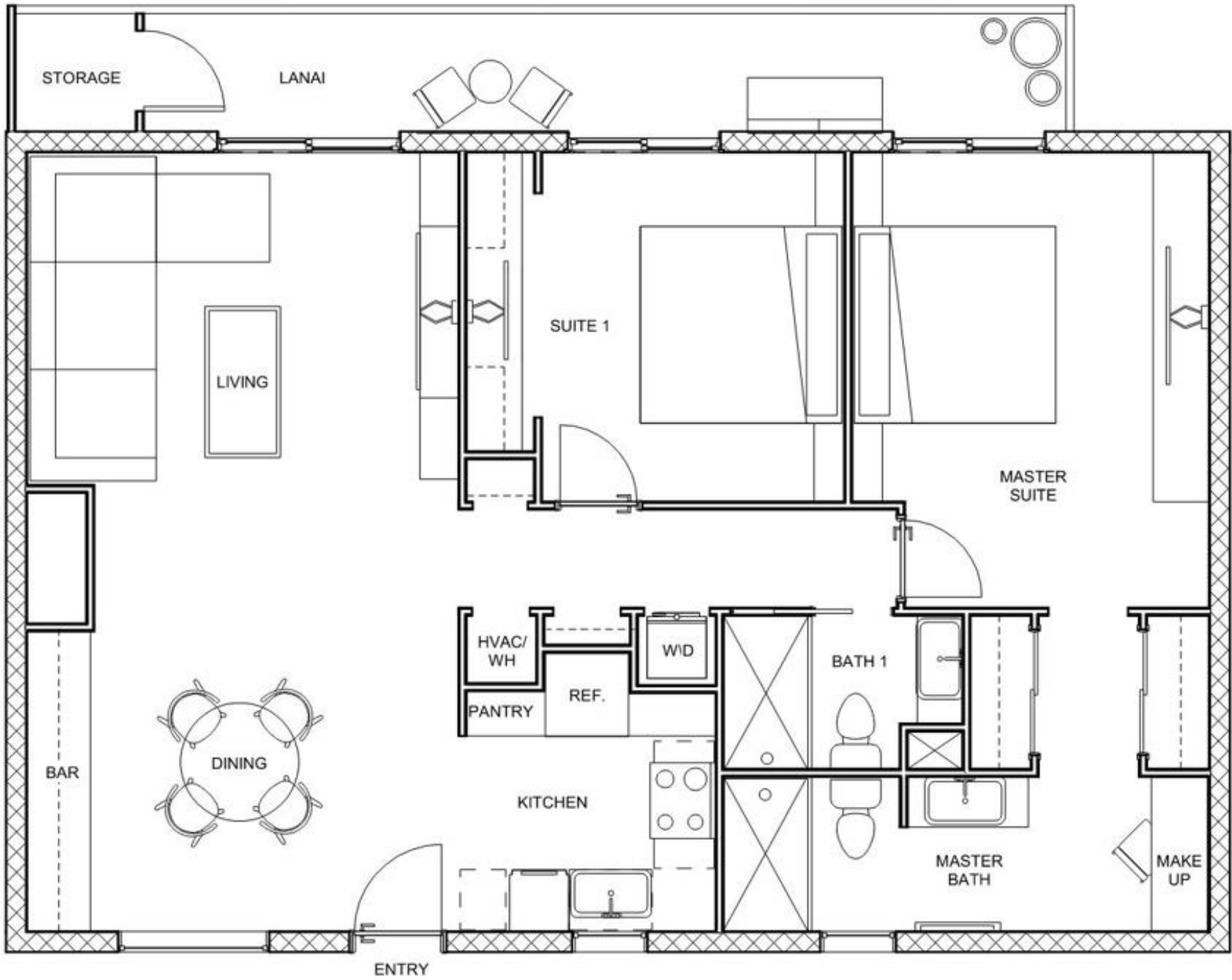


## Floor Plans

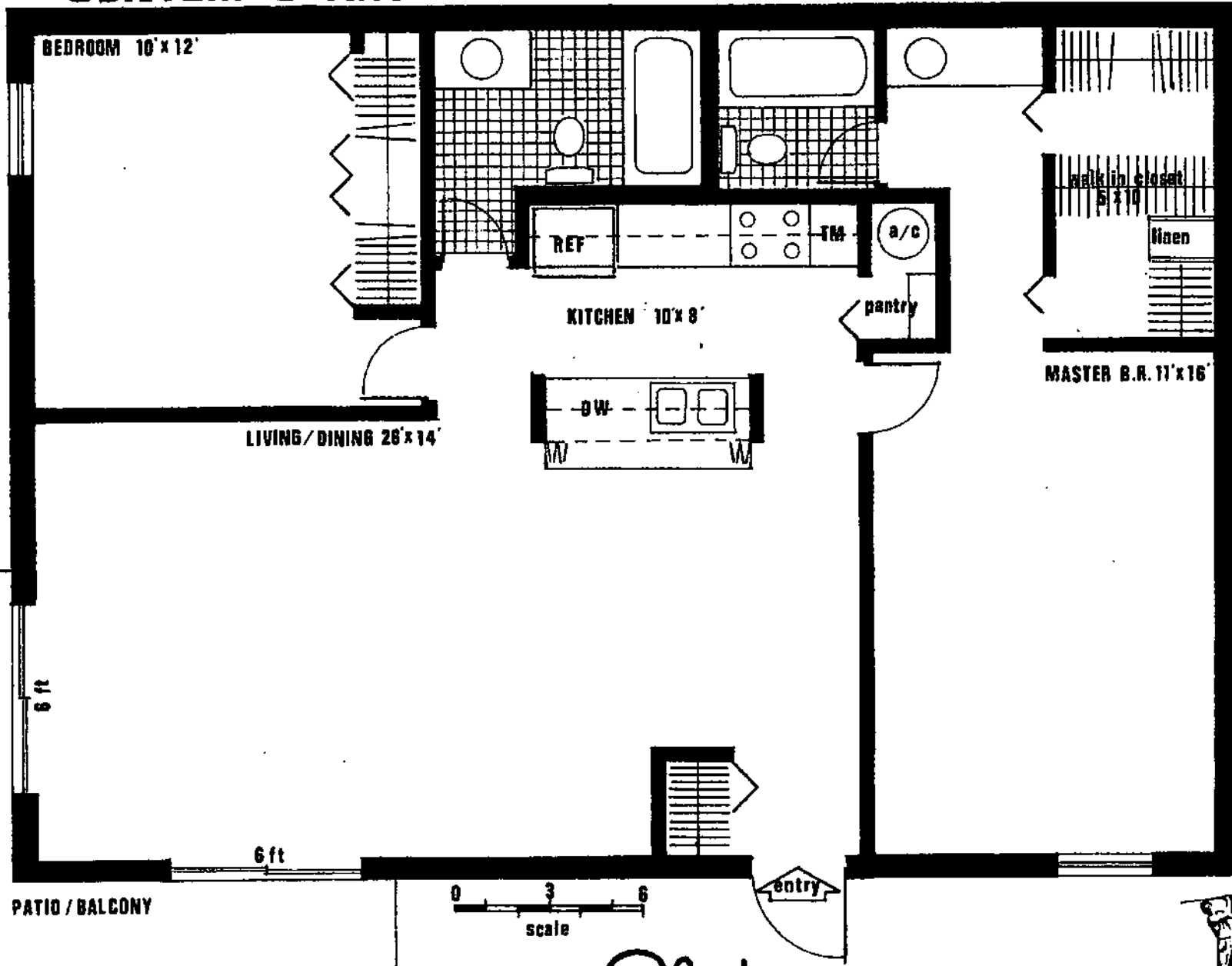
These floor plans have been assembled as a resource for you. They may not be inclusive of every home in the community.

Please note that over time, owners may make modifications to spaces that may not be captured in these original floor plans.

Renderings are not a guarantee of space measurement. Interested parties should verify through their own secured services.



# CONTEMPORARY

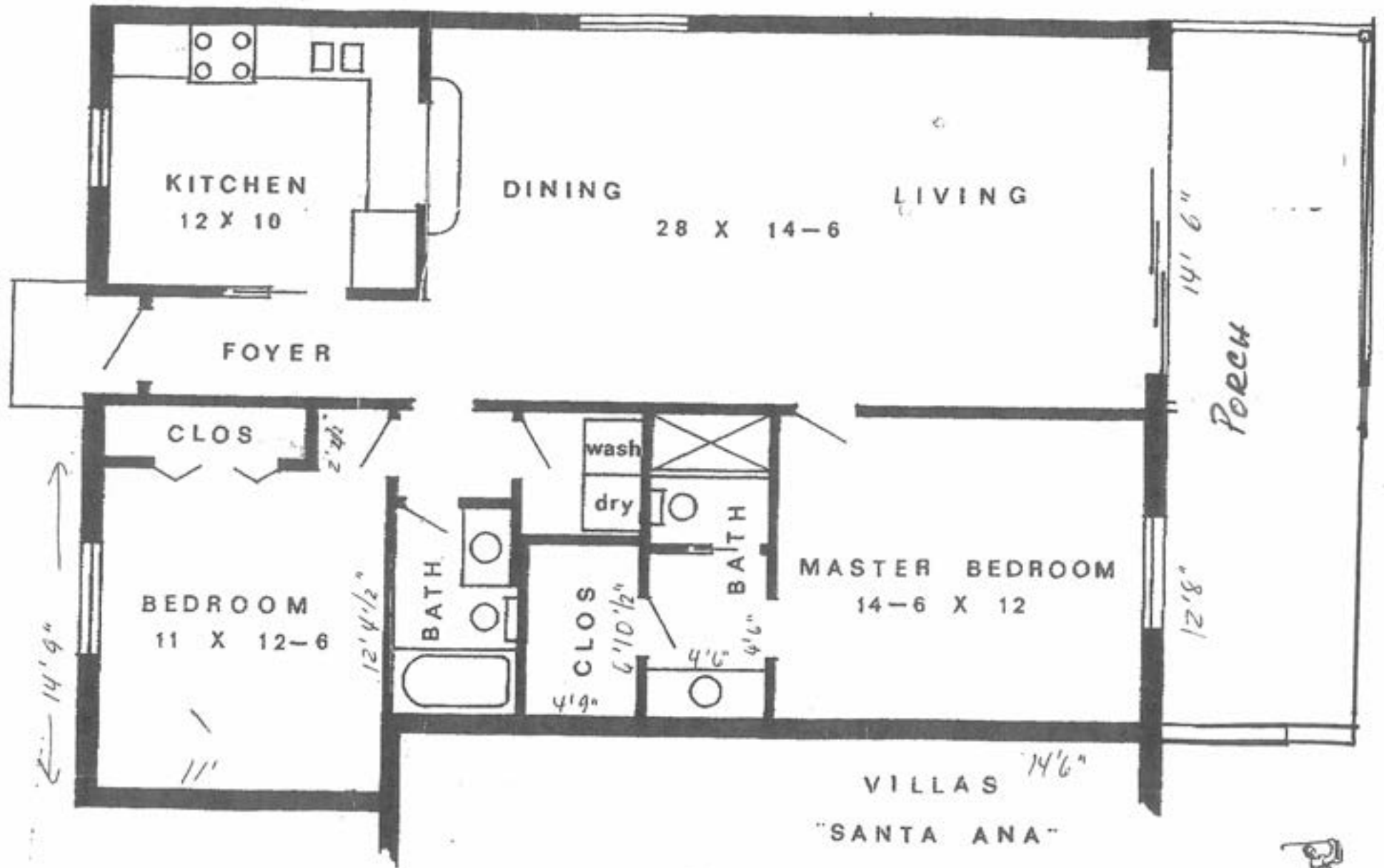


Dimensions are approximate. Plans subject to revisions deemed advisable by number of articles or required by law.

**THE Glades**  
CONDO CLUB  
CONDOMINIUMS

3451 TAMiami TRAIL EAST, NAPLES, FLORIDA 33940

PHONE (813) 774-4292

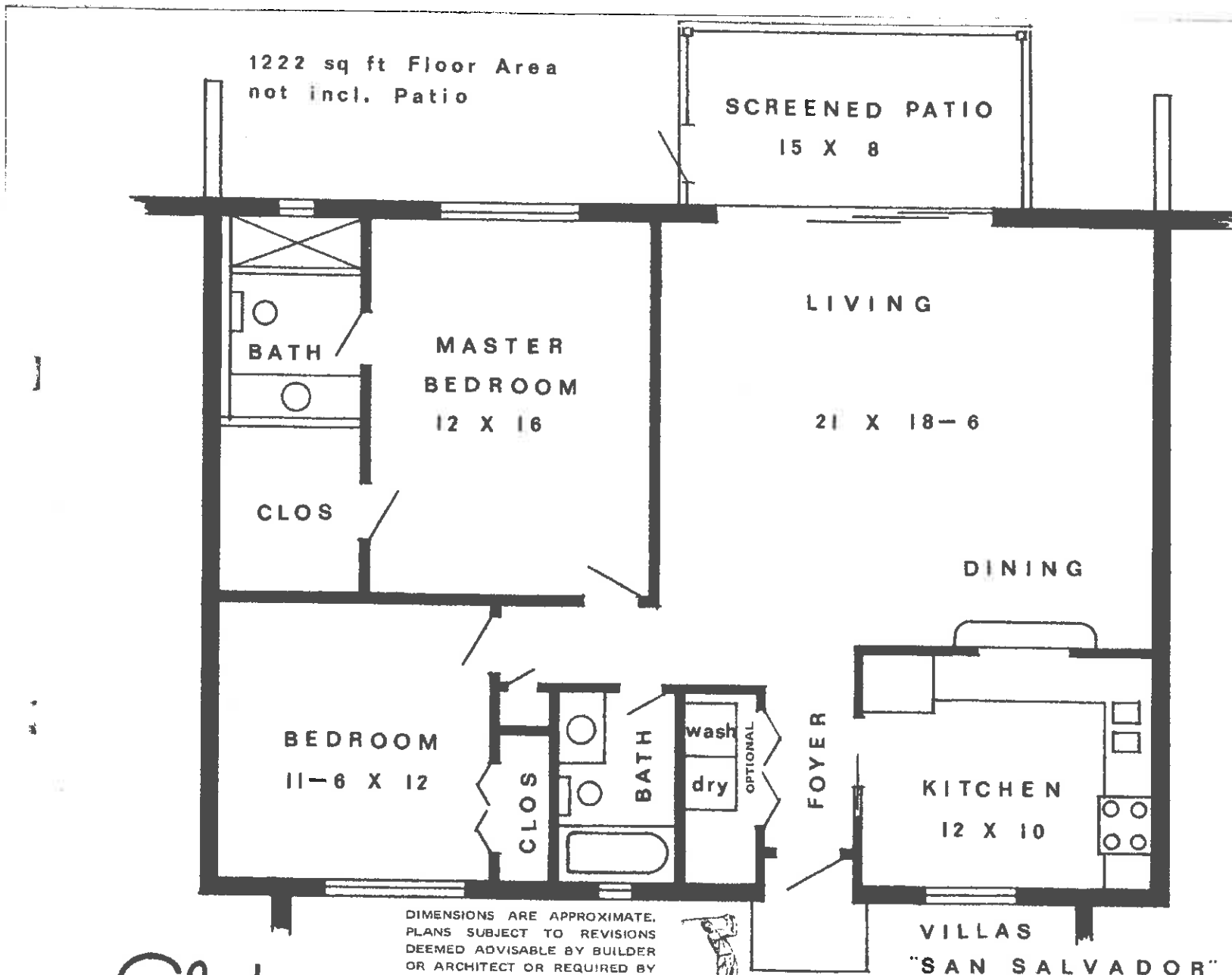


DIMENSIONS ARE APPROXIMATE. PLANS SUBJECT TO REVISIONS DEEMED ADVISABLE BY BUILDER OR ARCHITECT OR REQUIRED BY LAW.

THE **Glades** INC.  
CONDOMINIUM APARTMENTS

3451 TAMiami TRAIL EAST, NAPLES, FLORIDA 33940





DIMENSIONS ARE APPROXIMATE.  
PLANS SUBJECT TO REVISIONS  
DEEMED ADVISABLE BY BUILDER  
OR ARCHITECT OR REQUIRED BY  
LAW.

THE *Glades* INC.  
CONDOMINIUM APARTMENTS

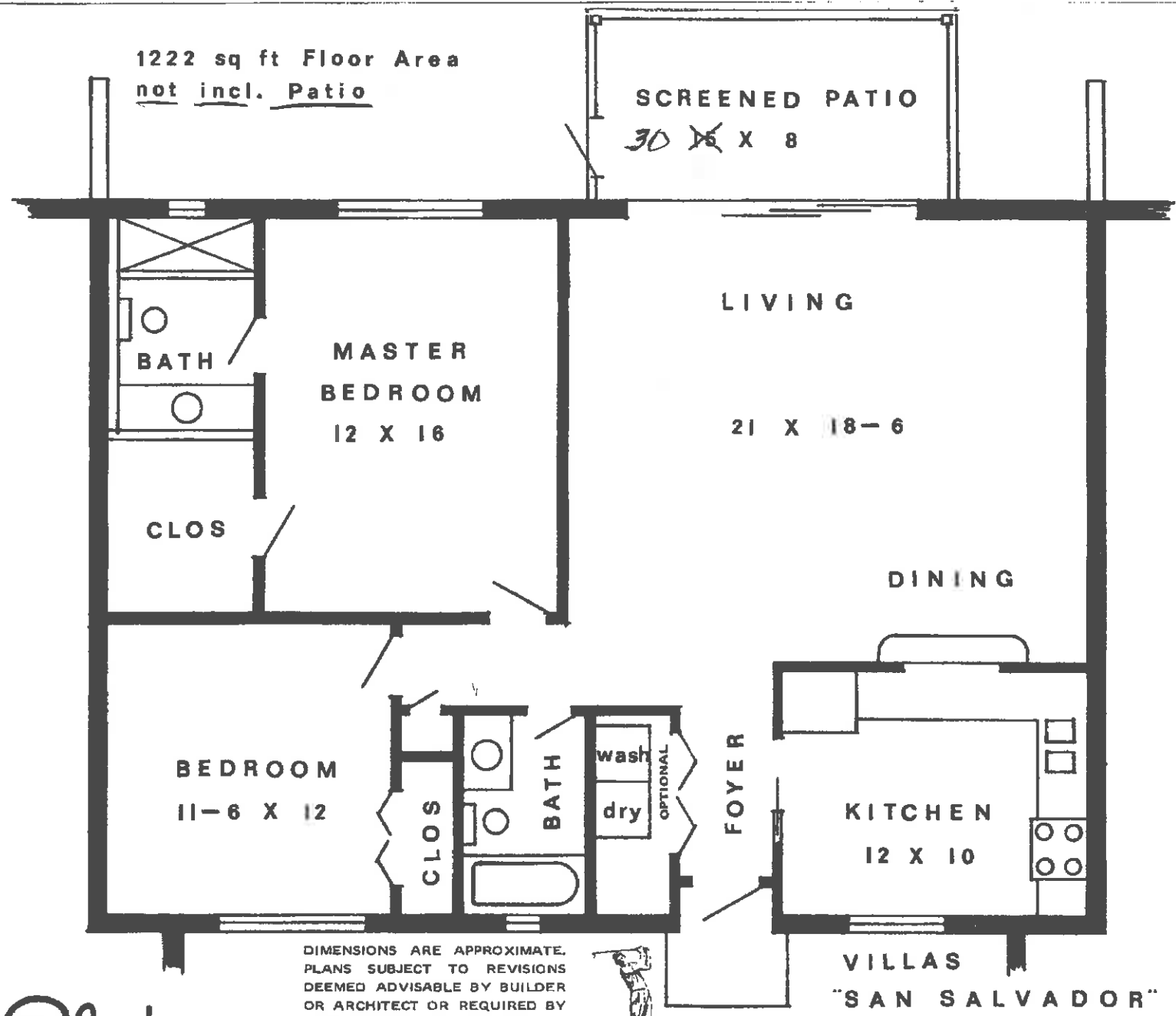
3451 TAMiami TRAIL EAST, NAPLES, FLORIDA 33940



*46 GLADES BLVD  
UNIT #1*

1222 sq ft Floor Area  
not incl. Patio

SCREENED PATIO  
30 X 8



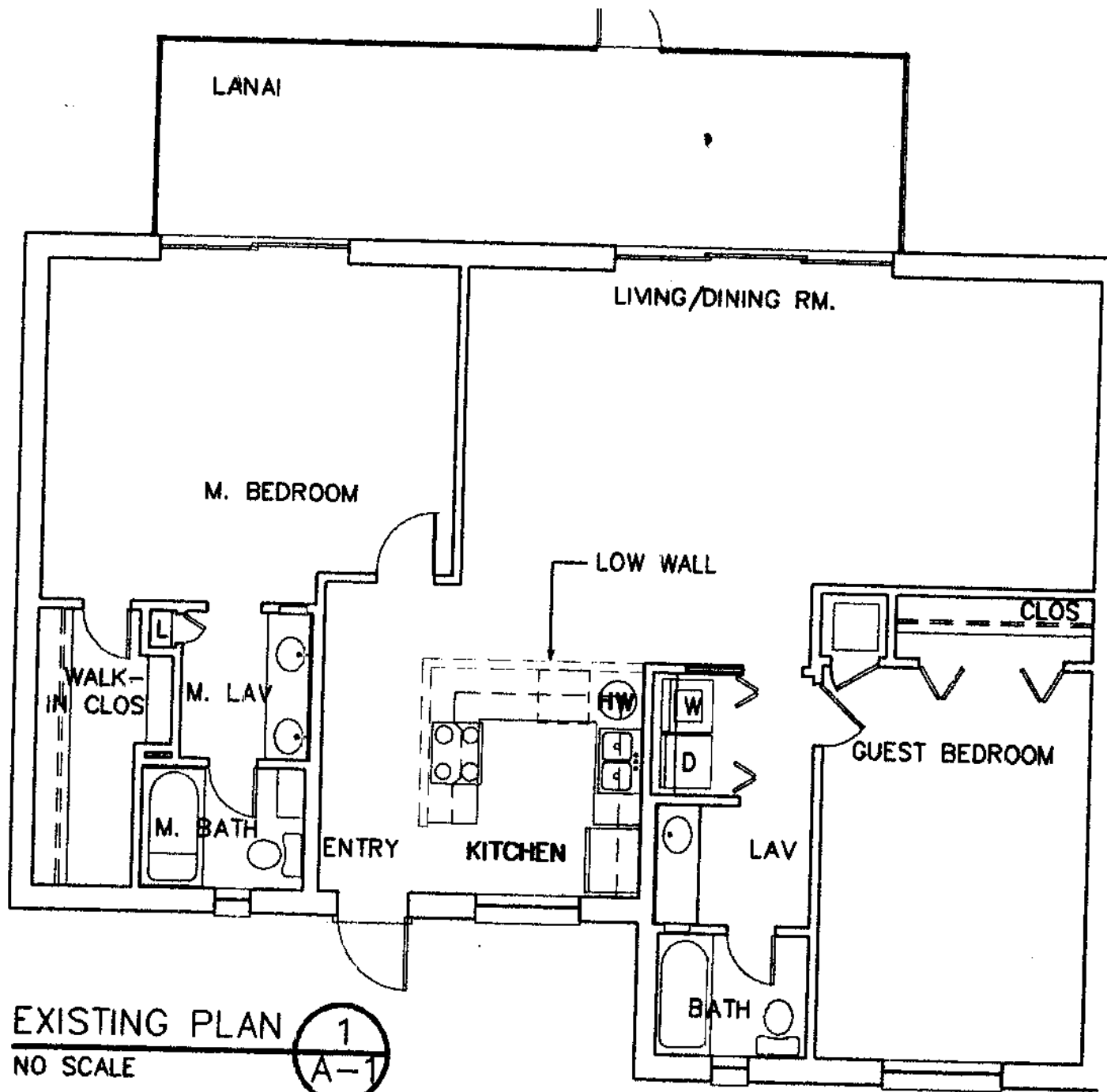
DIMENSIONS ARE APPROXIMATE.  
PLANS SUBJECT TO REVISIONS  
DEEMED ADVISABLE BY BUILDER  
OR ARCHITECT OR REQUIRED BY  
LAW.



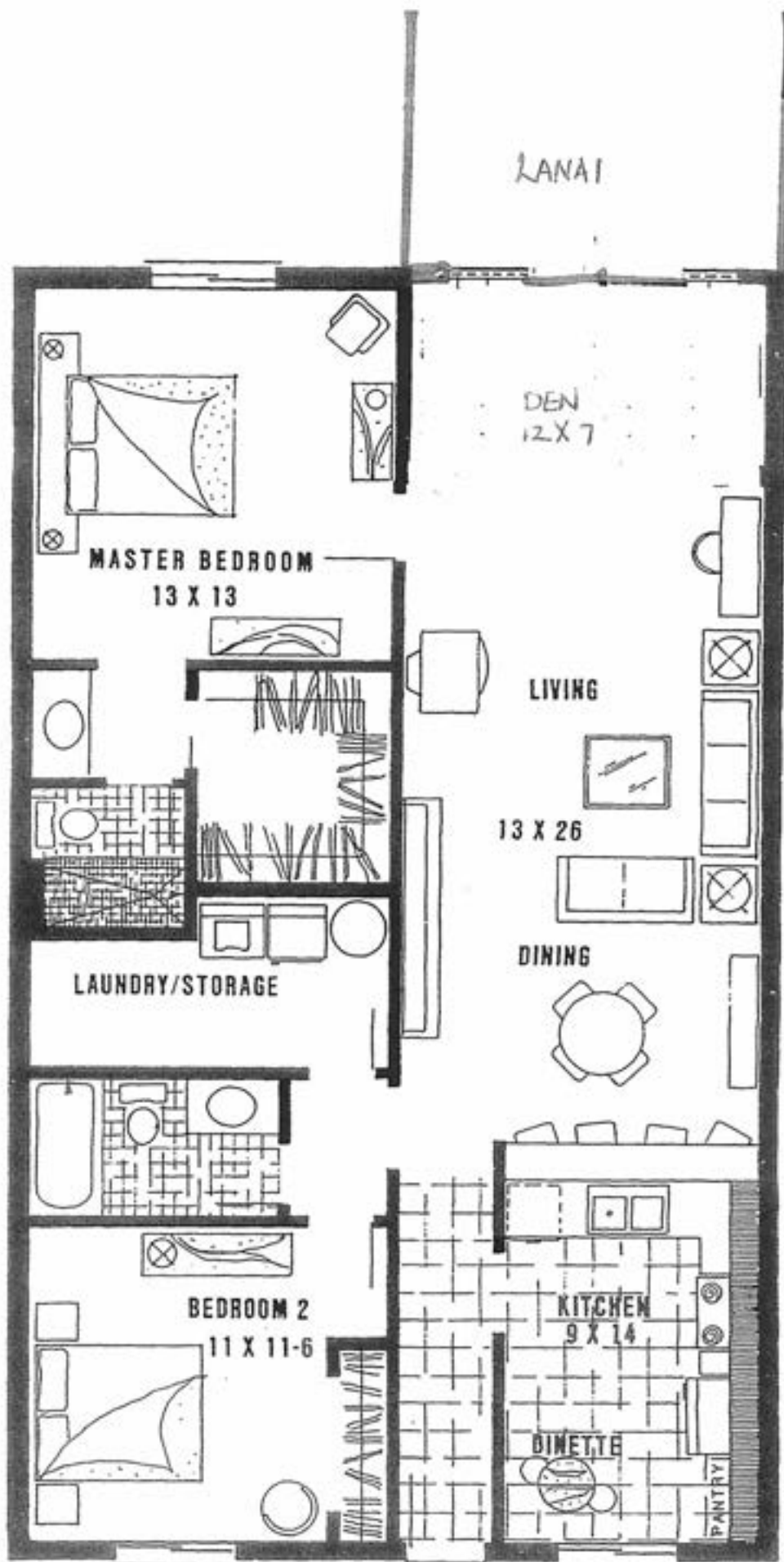
THE **Glades** INC.  
CONDOMINIUM APARTMENTS  
SINCE 1977

3451 TAMiami TRAIL EAST, NAPLES, FLORIDA 33940

VILLAS  
"SAN SALVADOR"



APPROXIMATE SQUARE FOOTAGE IS 1,270SF  
 THE FLOOR PLAN INFORMATION DEEMED RELIABLE BUT NOT WARRANTED.



**FLOOR PLAN**

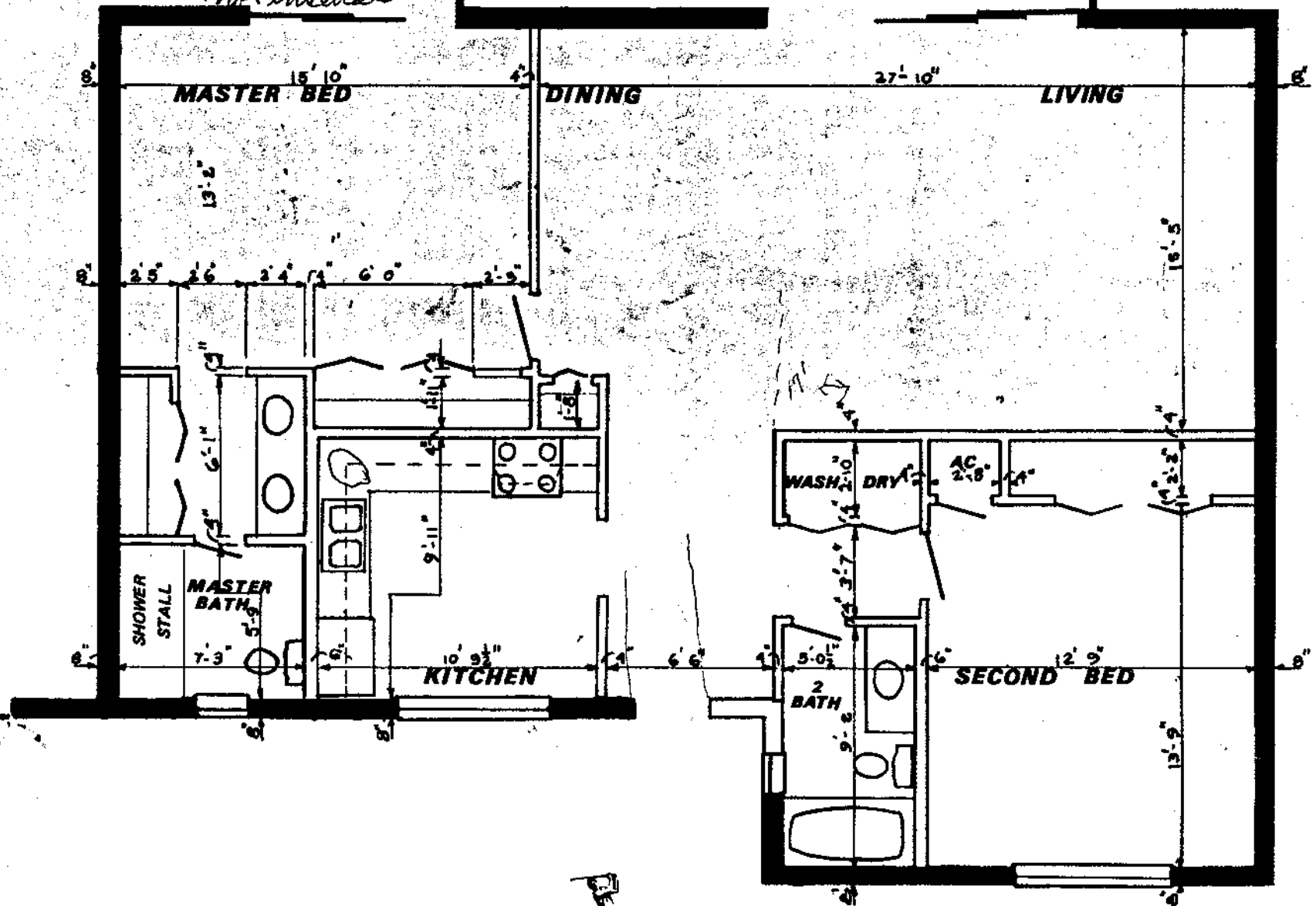
ALL MEASUREMENTS APPROXIMATE AND SUBJECT TO CHANGE IN ORDER TO PERMIT USE OF THE LATEST AND



Patty & Ken  
Hudson

13' 40"  
not included

- 8 X 20  
SCREEN PORCH



**ESPLANADE  
PLAN B**

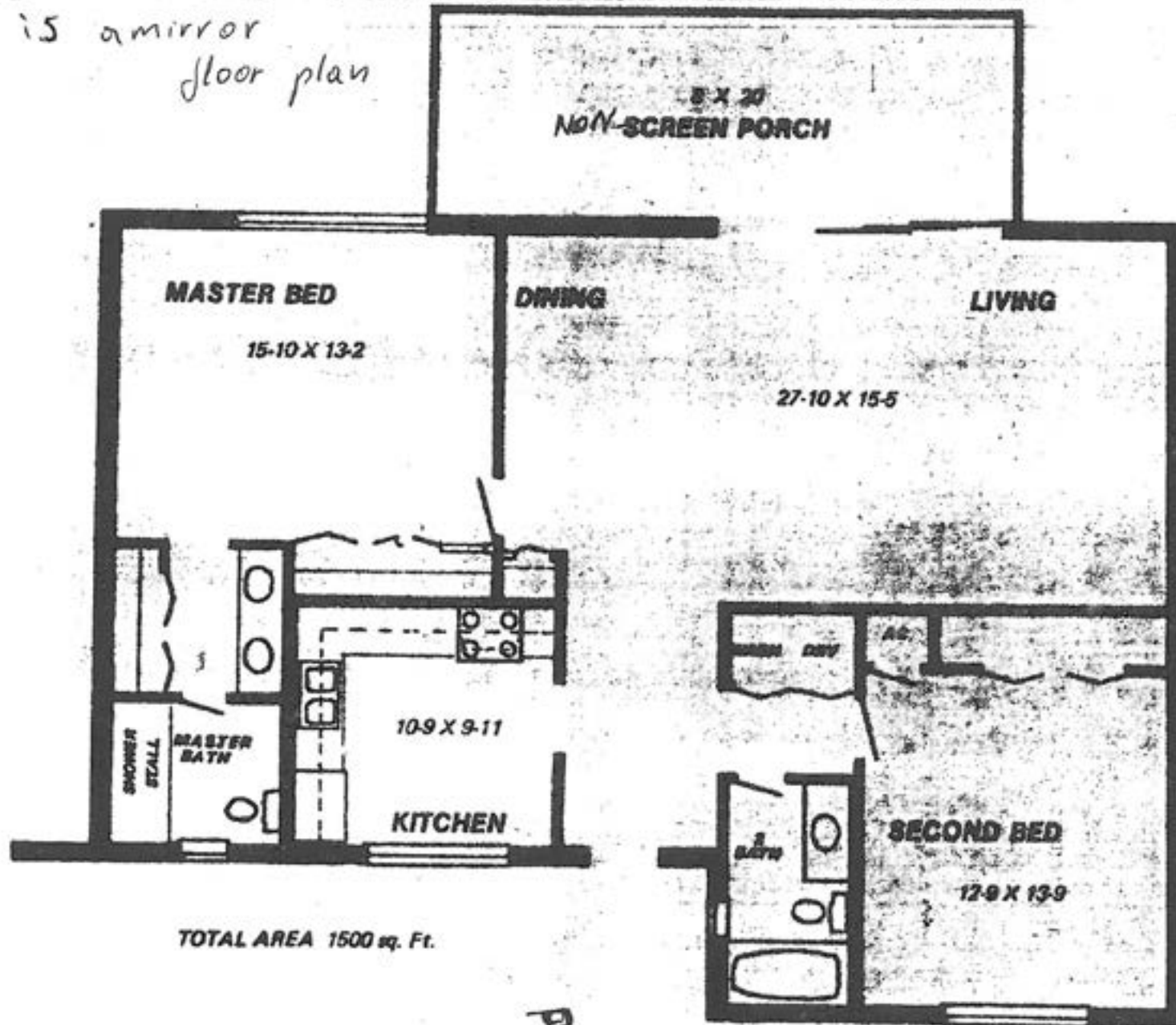
3451 TAMiami TRAIL EAST, NAPLES, FLORIDA 33940

PHONE (813) 774-4282



Dimensions are approximate. Plans subject to revisions deemed appropriate by  
builder or architect or reported to us.

This is a mirror floor plan

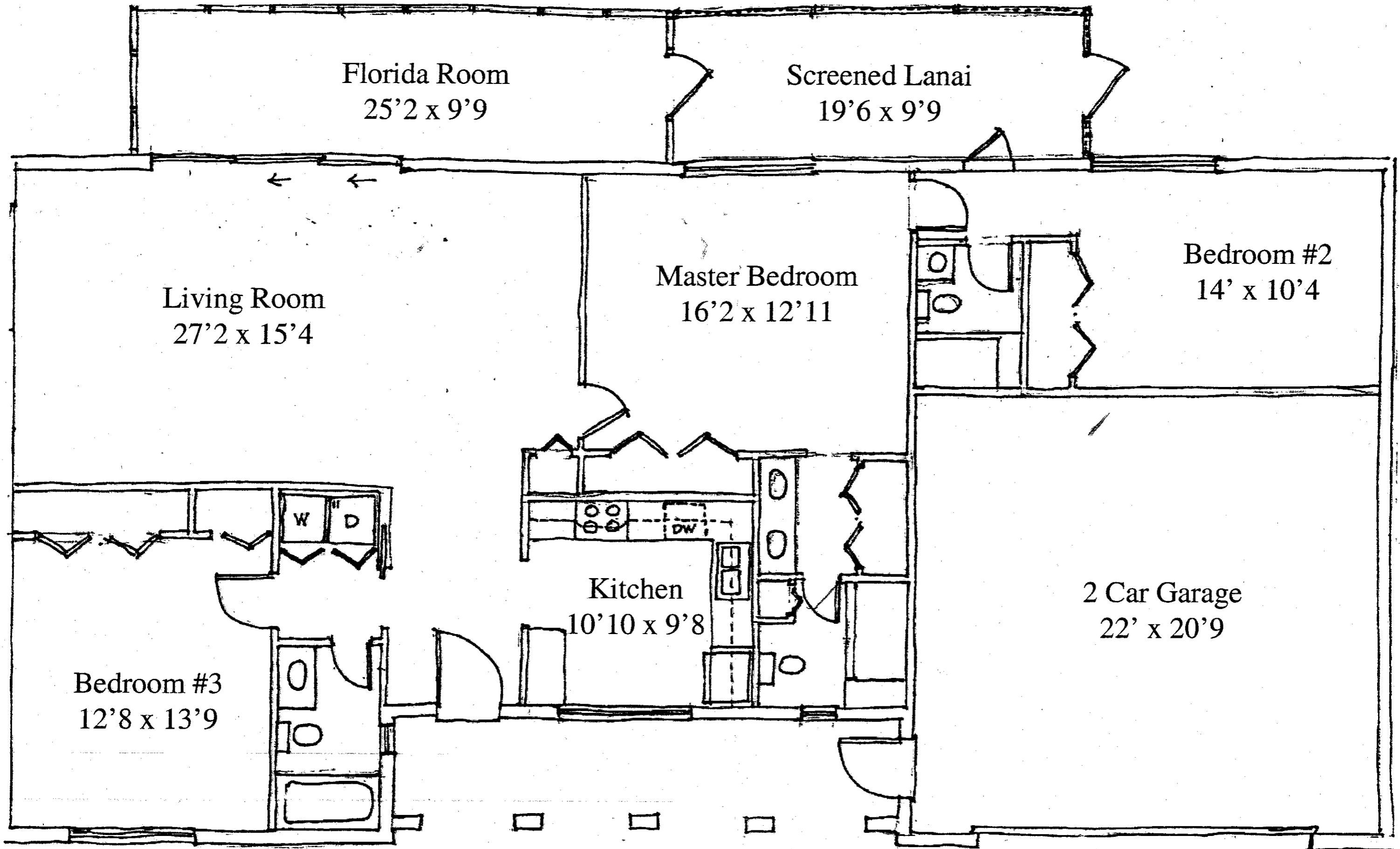


TOTAL AREA 1500 sq. Ft.



ESPLANADE

DIMENSIONS ARE APPROXIMATE. PLANS SUBJECT TO REVISIONS DEEMED ADVISABLE BY BUILDER OR ARCHITECT OR REQUIRED BY LAW.



Florida Room  
25'2 x 9'9

Screened Lanai  
19'6 x 9'9

Living Room  
27'2 x 15'4

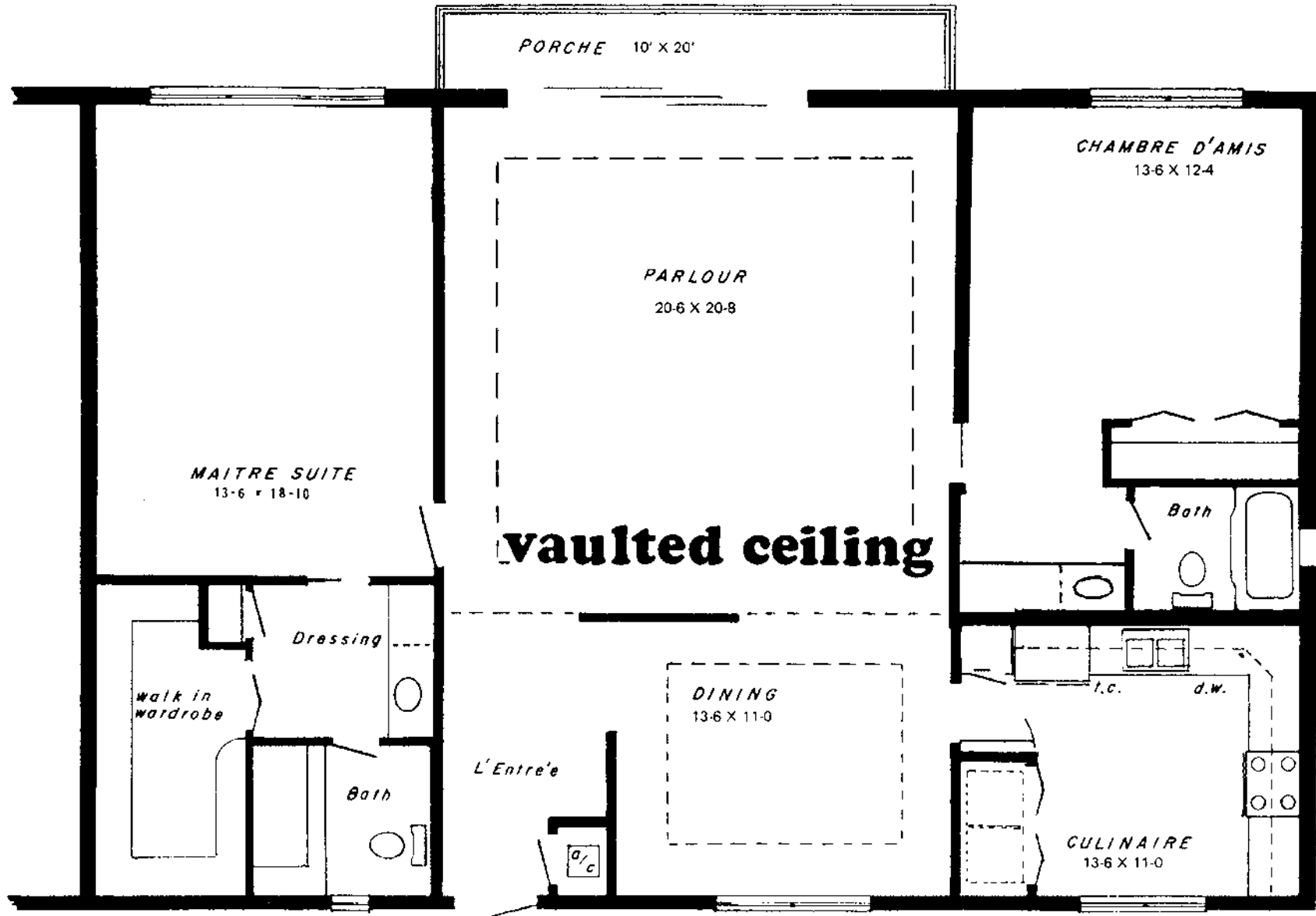
Master Bedroom  
16'2 x 12'11

Bedroom #2  
14' x 10'4

Bedroom #3  
12'8 x 13'9

Kitchen  
10'10 x 9'8

2 Car Garage  
22' x 20'9



# LOUISIANA

THE *Glades* INC.  
 CONDOMINIUM APARTMENTS  
 N. W. 7th St.

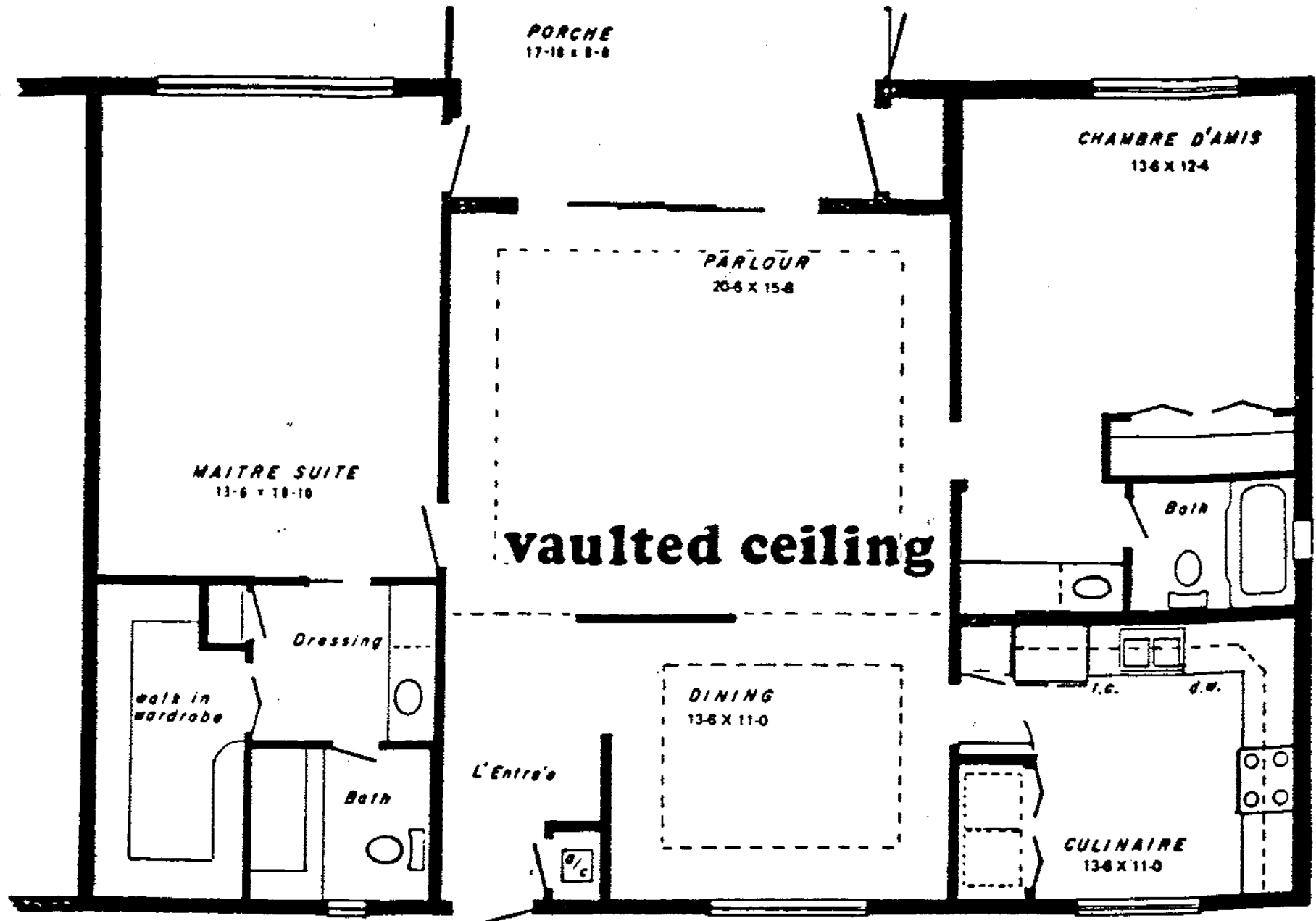
3451 TAMiami TRAIL EAST, NAPLES, FLORIDA 33940

PHONE (813) 774-4292



Total Area - 1823 Sq. Ft.

DIMENSIONS ARE APPROXIMATE. PLANS SUBJECT TO REVISIONS DEEMED ADVISABLE BY BUILDER OR ARCHITECT OR REQUIRED BY LAW.



# BAYOU

THE **Glades** INC.  
CONDOMINIUM APARTMENTS  
© WILLIS

3451 TAMiami TRAIL EAST, NAPLES, FLORIDA 33940  
PHONE (813) 774-4388



Total Area 1695 Sq. Ft.

DIMENSIONS ARE APPROXIMATE. PLANS SUBJECT TO REVISIONS DEEMED ADVISABLE BY BUILDER OR ARCHITECT OR REQUIRED BY LAW.