

## Floor Plans

These floor plans have been assembled as a resource for you. They may not be inclusive of every home in the community.

Please note that over time, owners may make modifications to spaces that may not be captured in these original floor plans.

Renderings are not a guarantee of space measurement. Interested parties should verify through their own secured services.

# THE COLLIER'S RESERVE SITE PLAN



The Monika DeBenedictis Team

Monika R. DeBenedictis, P.A., ABR, CLHMS, GREEN, GRI, REALTOR®

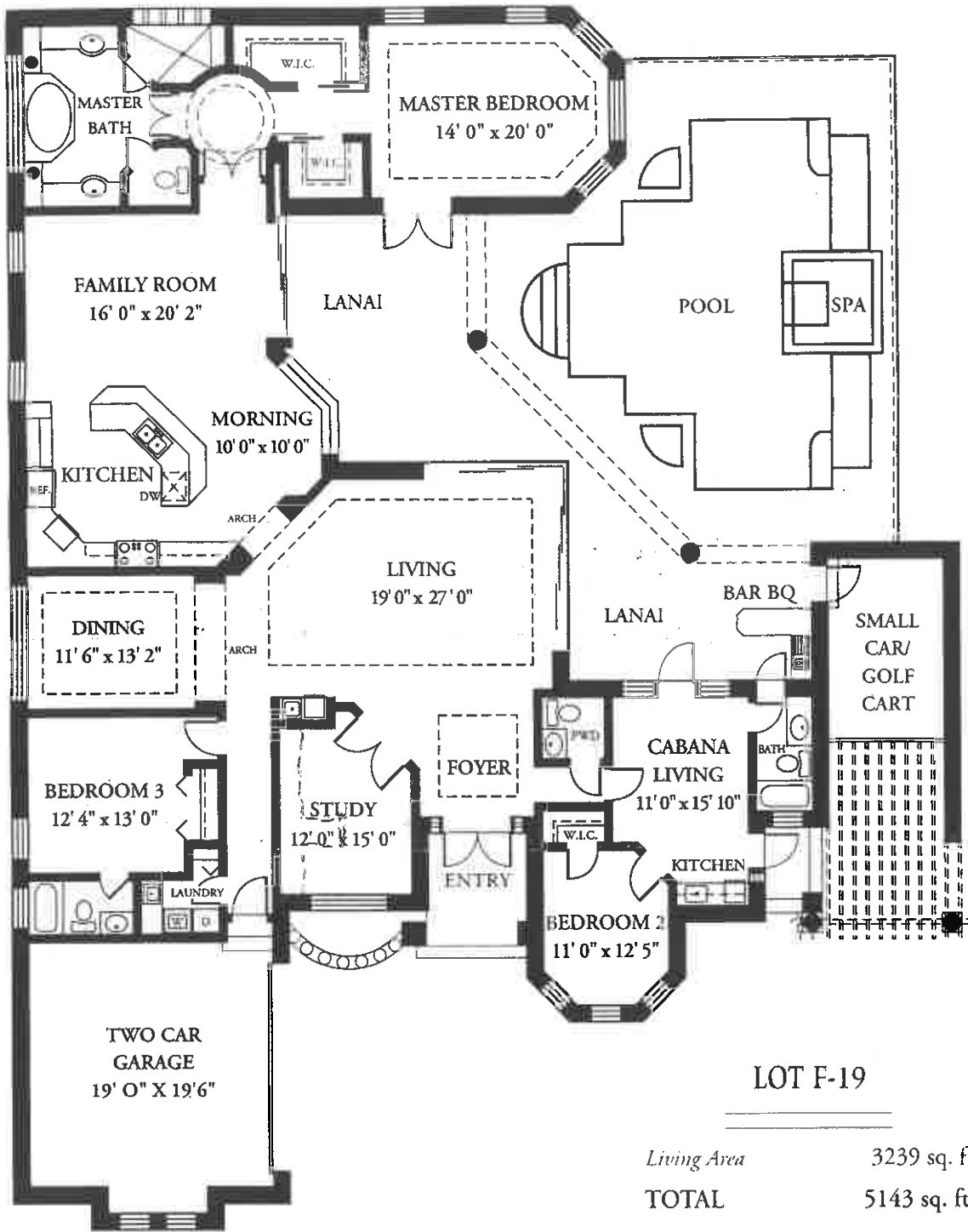
*Collier's Reserve Resident Agent*

[www.YourHomeInNaples.com](http://www.YourHomeInNaples.com)



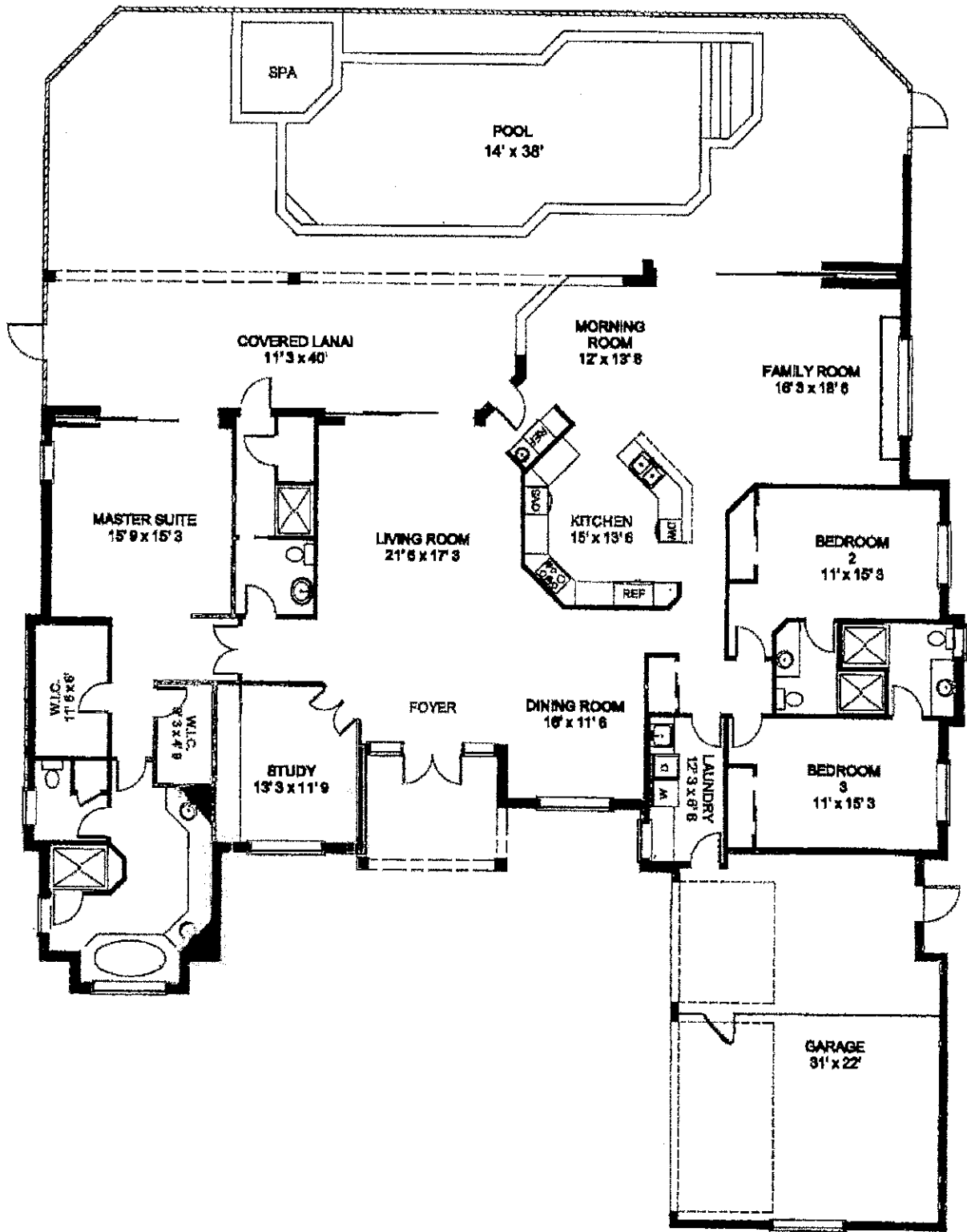
*Collier's Reserve*



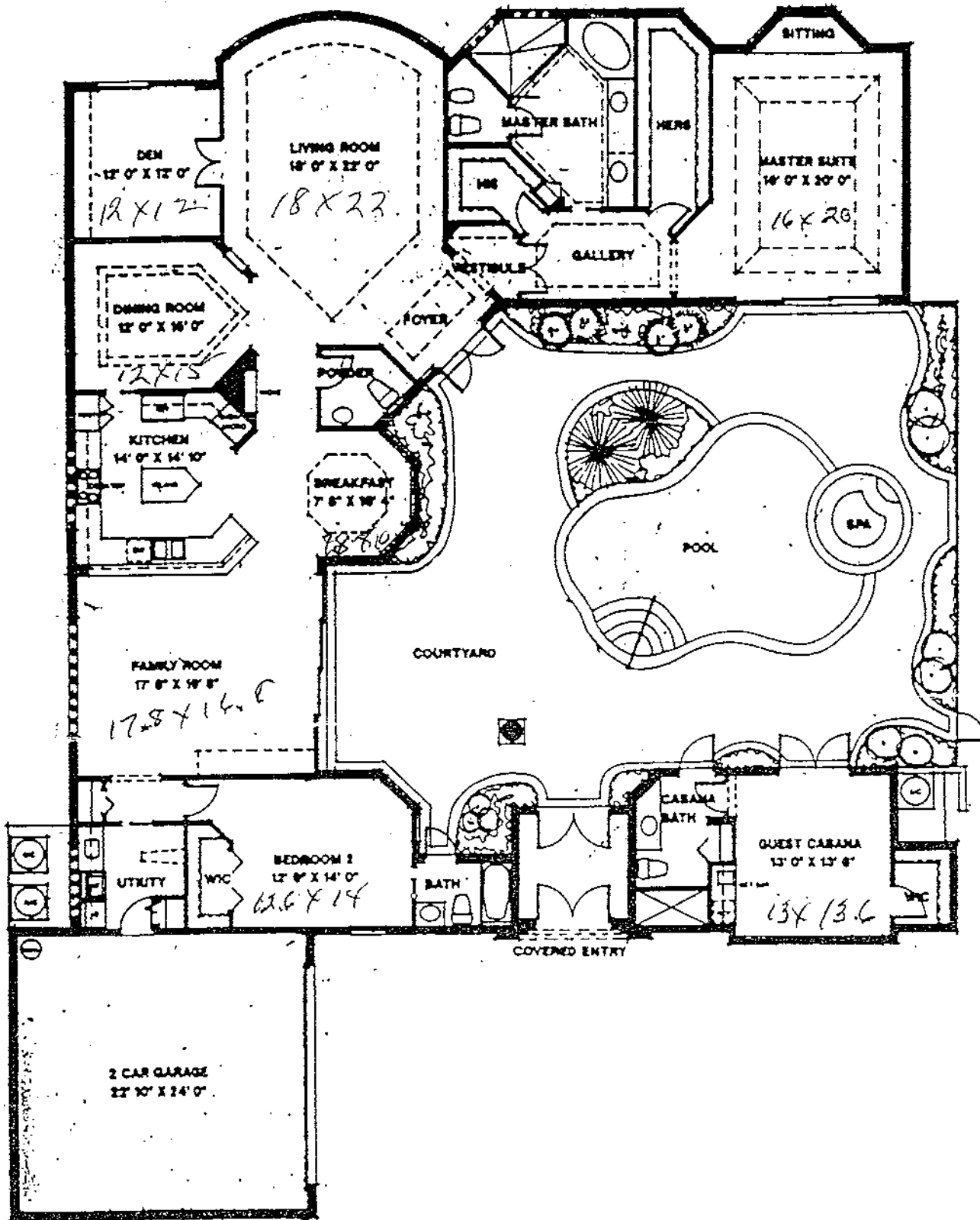


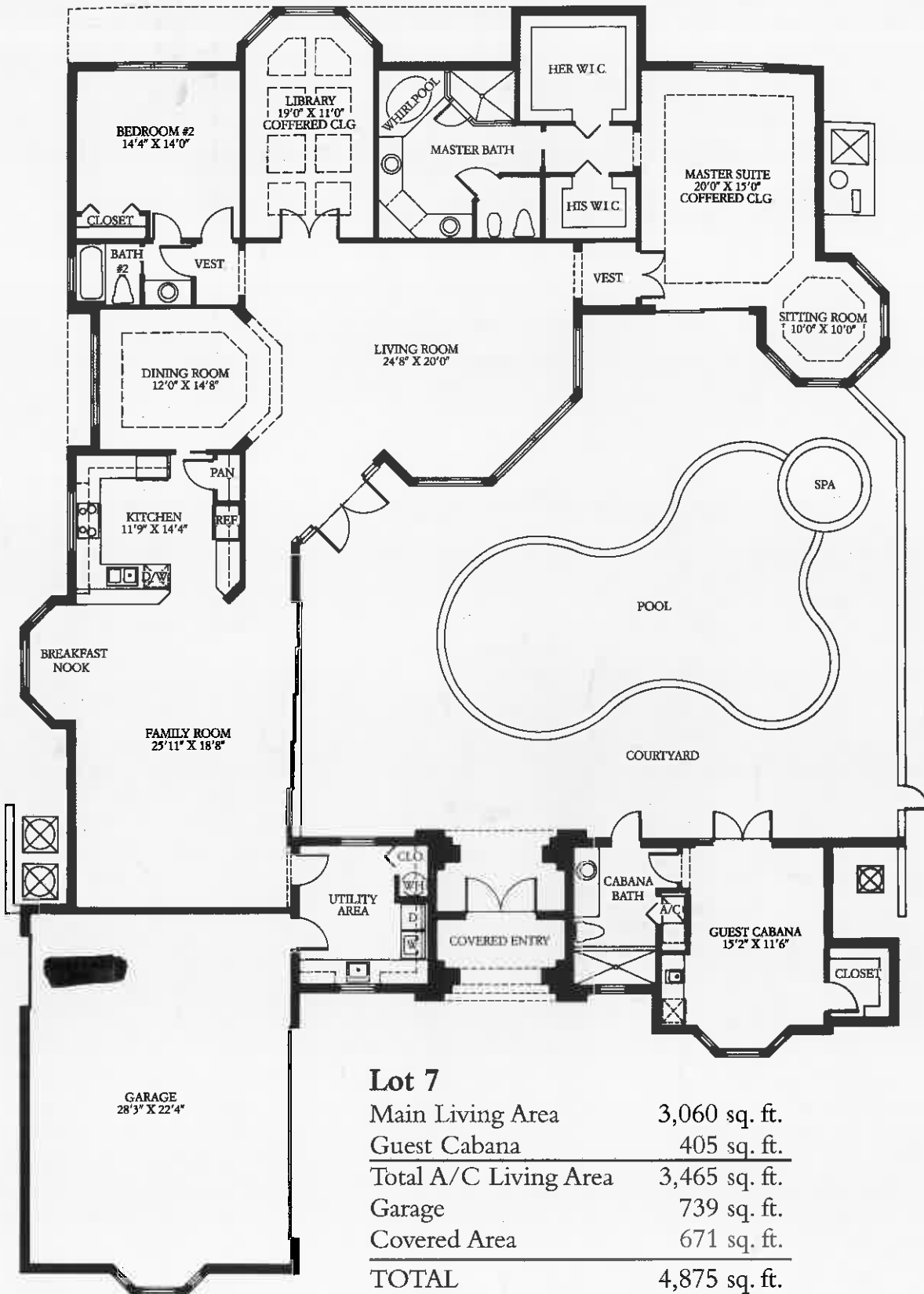
**LOT F-19**

<i>Living Area</i>	3239 sq. ft.
<b>TOTAL</b>	<b>5143 sq. ft.</b>



FOR ILLUSTRATION ONLY  
 MEASUREMENTS APPROXIMATE  
 ALL INFORMATION DEEMED RELIABLE BUT NOT GUARANTEED

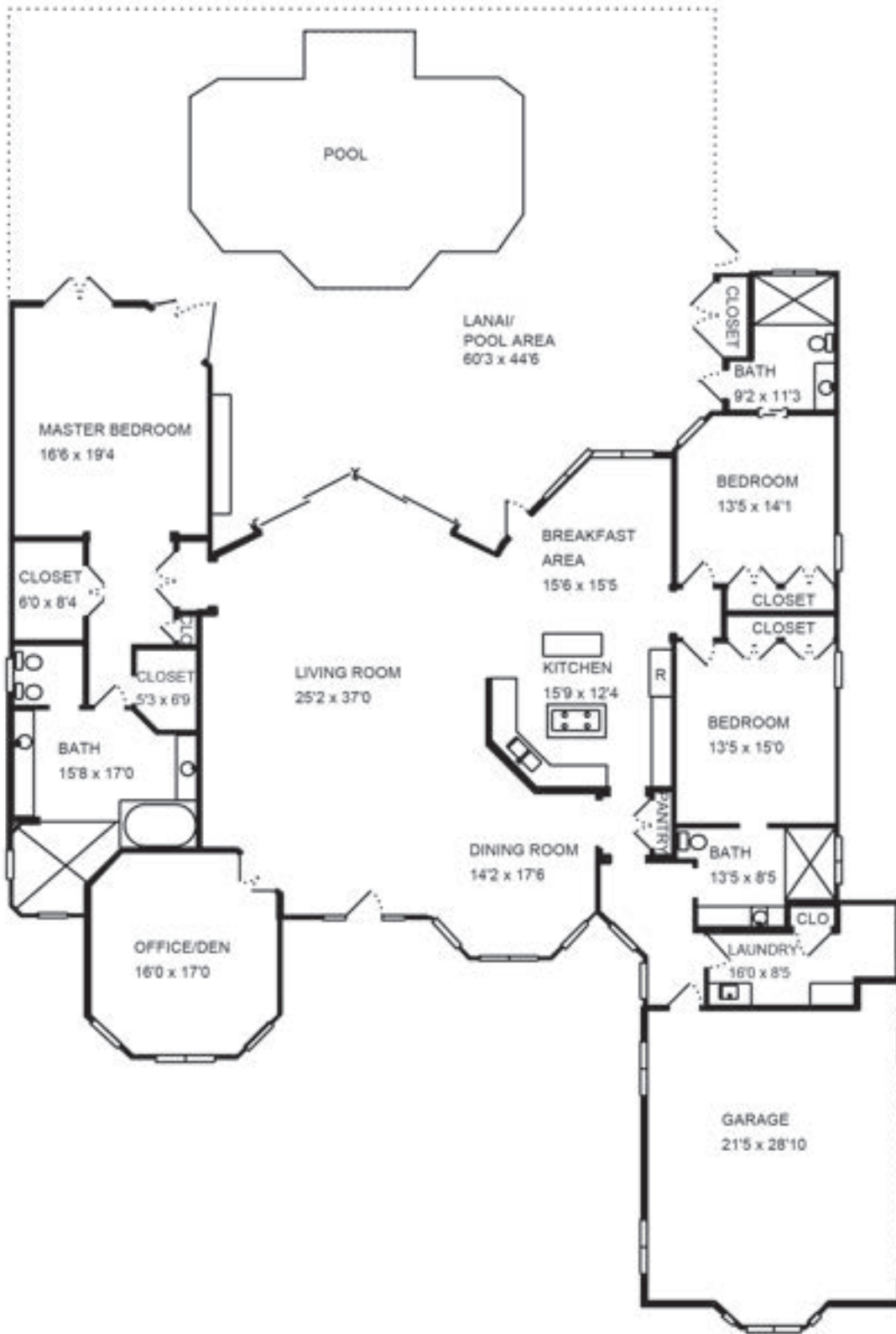




Dimensions and specifications are subject to change without notice

Offered exclusively by Collier's Reserve Realty, Inc Co-Broker participation encouraged  
 Prices and availability are subject to change without notice Rendering is an artist's conception.

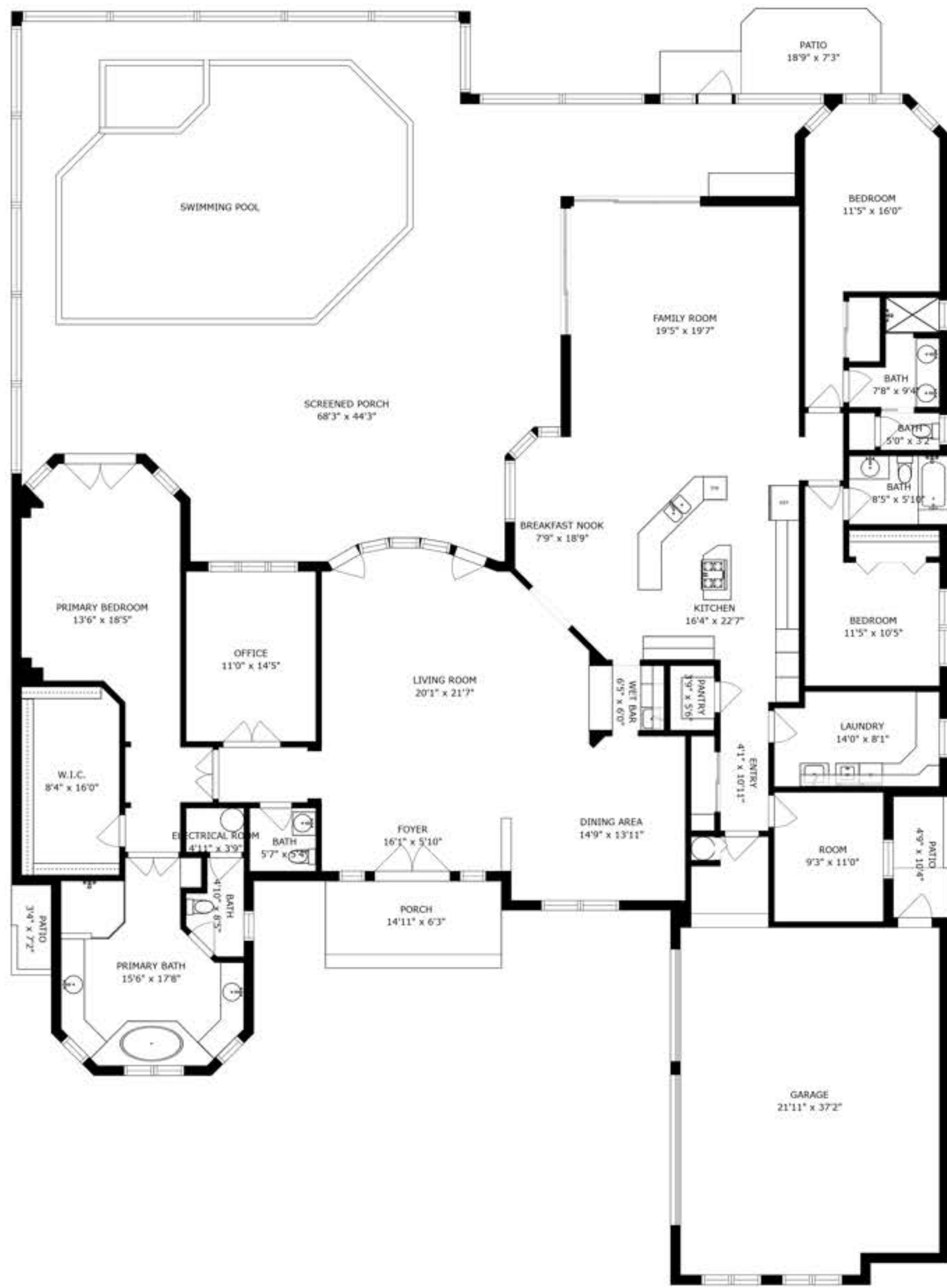




12243 Colliers Reserve Drive , Naples, FL 34104

First Level

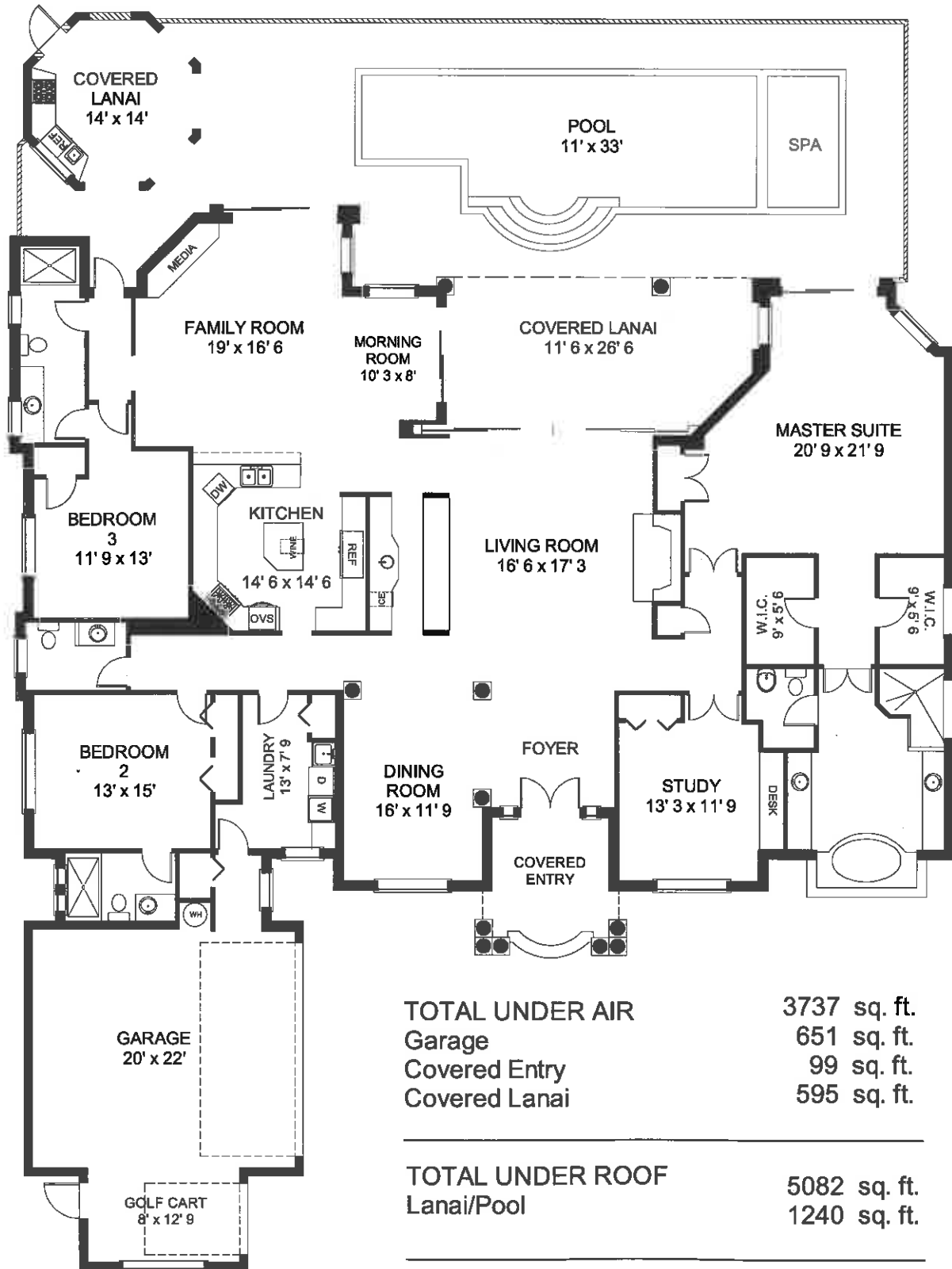




SIZES AND DIMENSIONS ARE APPROXIMATE, ACTUAL MAY VARY.



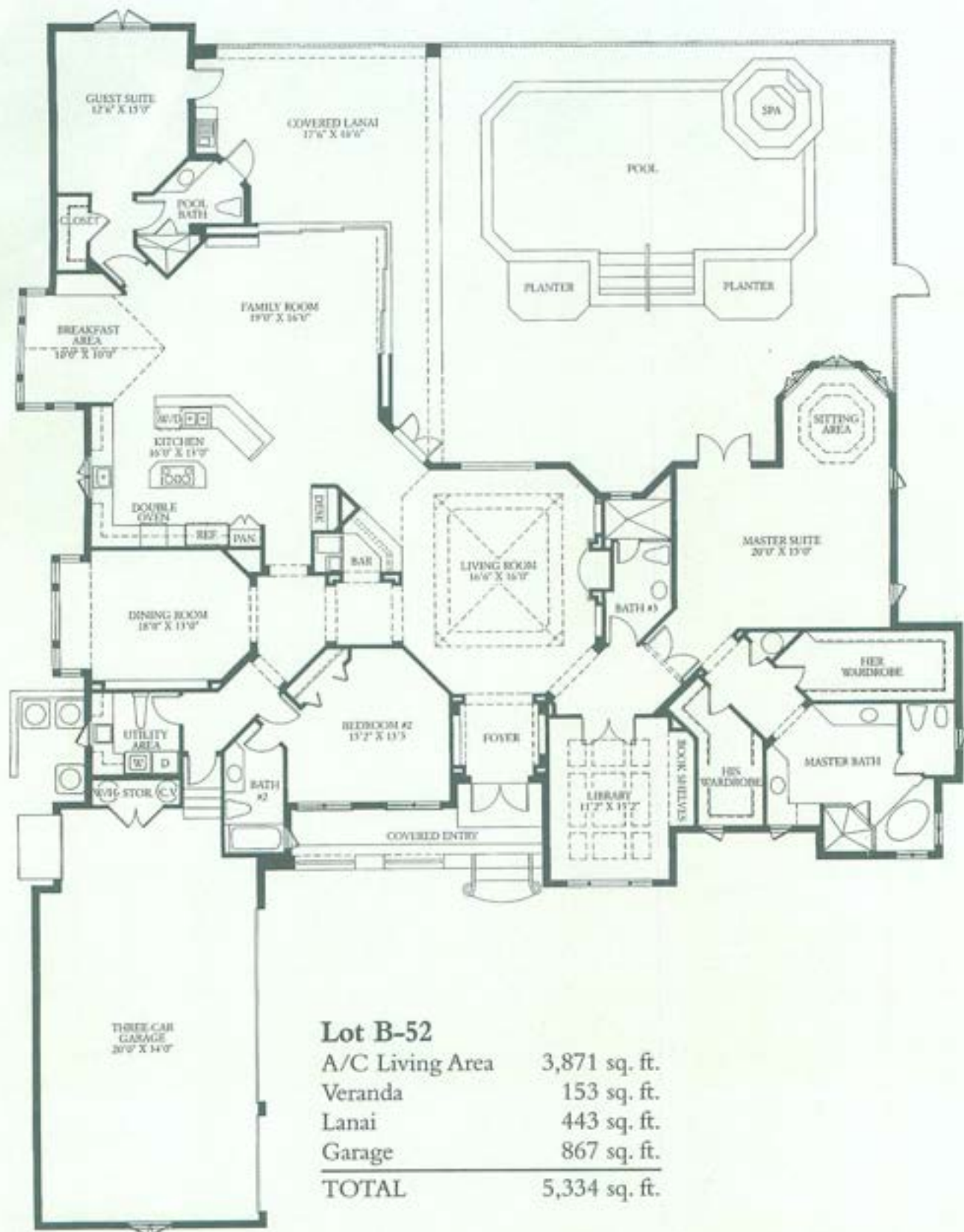




<b>TOTAL UNDER AIR</b>	<b>3737 sq. ft.</b>
Garage	651 sq. ft.
Covered Entry	99 sq. ft.
Covered Lanai	595 sq. ft.

<b>TOTAL UNDER ROOF</b>	<b>5082 sq. ft.</b>
Lanai/Pool	1240 sq. ft.

<b>TOTAL AREA</b>	<b>6322 sq. ft.</b>
-------------------	---------------------



Located 3 miles west of I-75 and 1/3 mile east off US 41, on Immokalee Road.  
1000 Crosspointe Drive, Naples, FL 34110. Call 941-592-1000 or 800-695-5263.

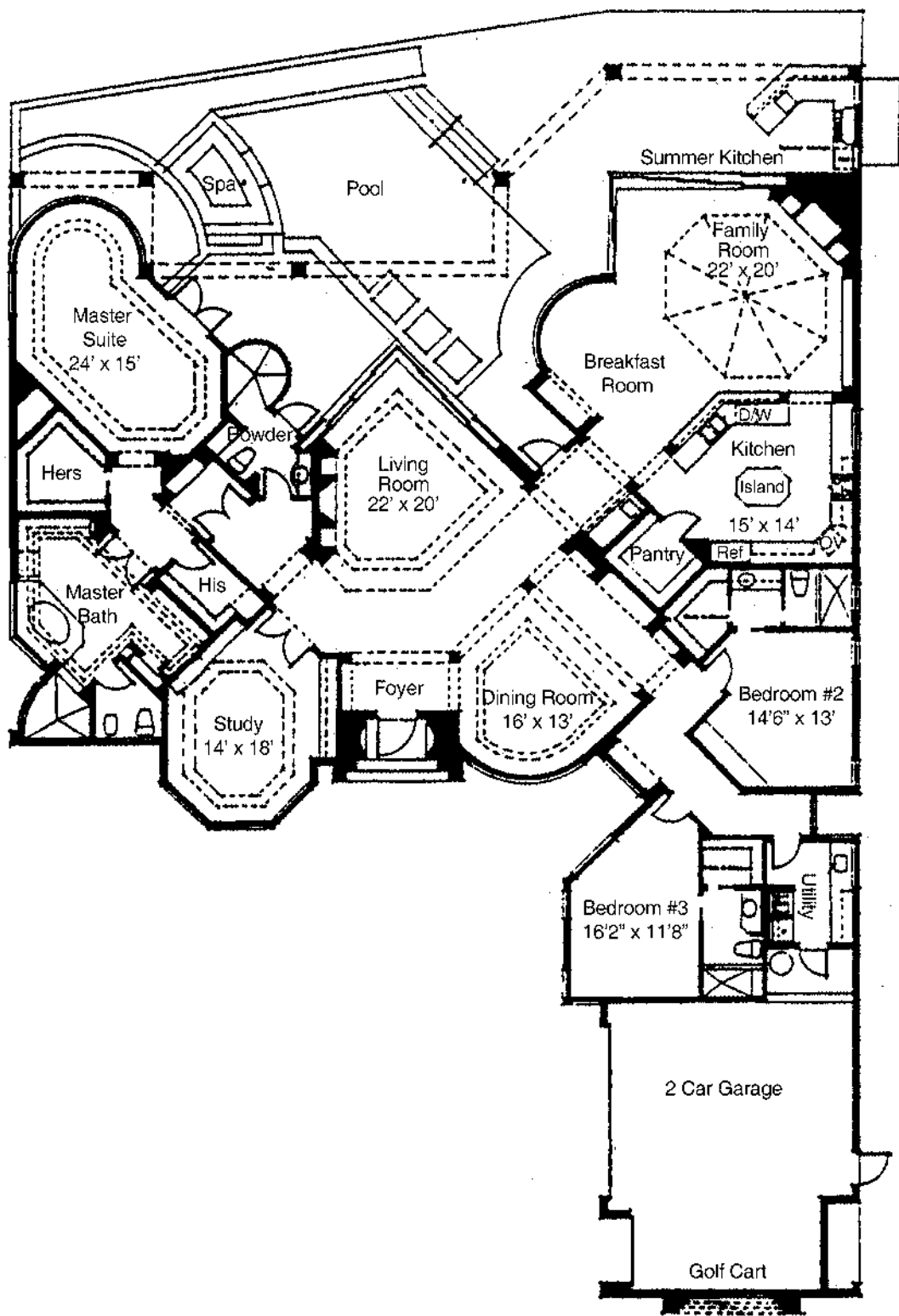


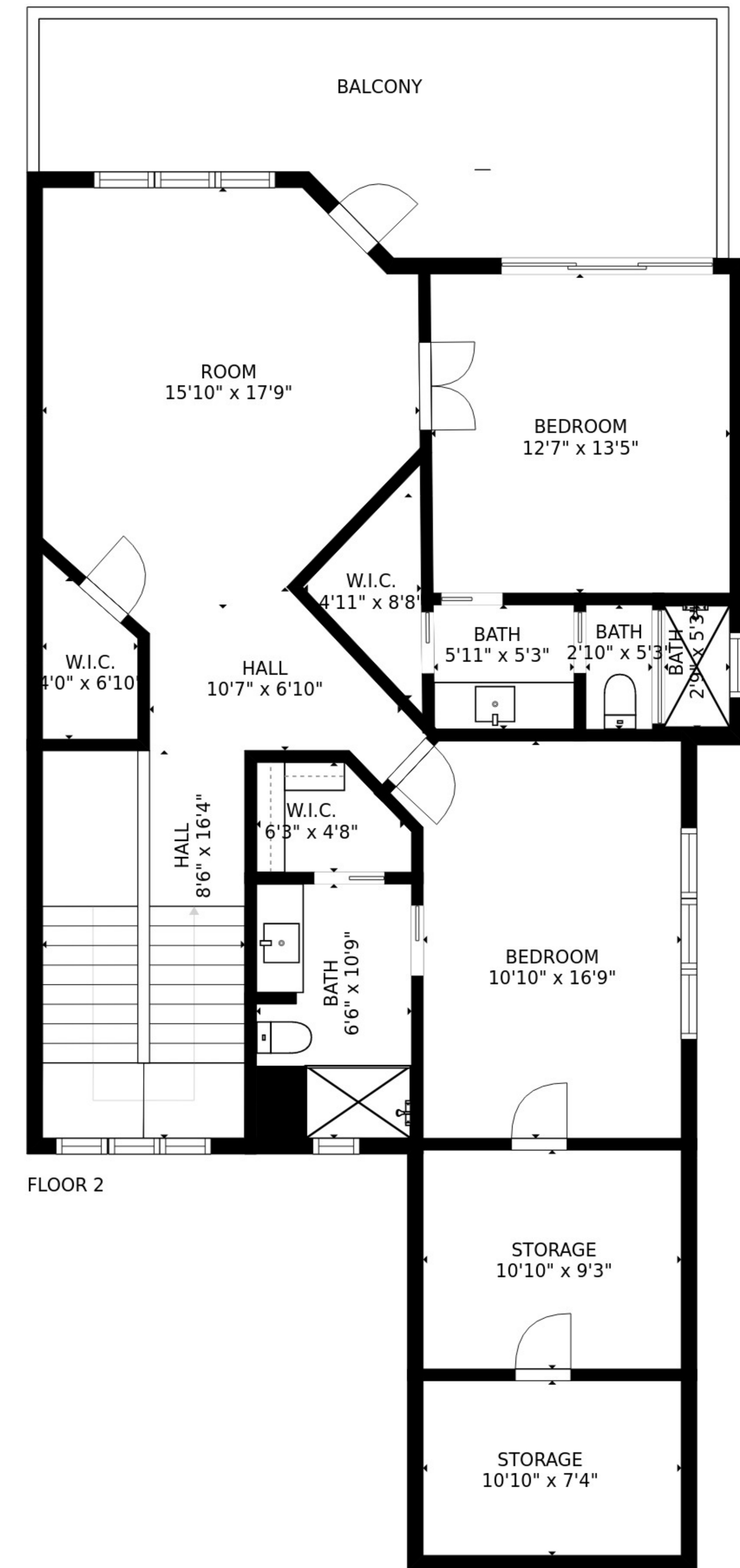
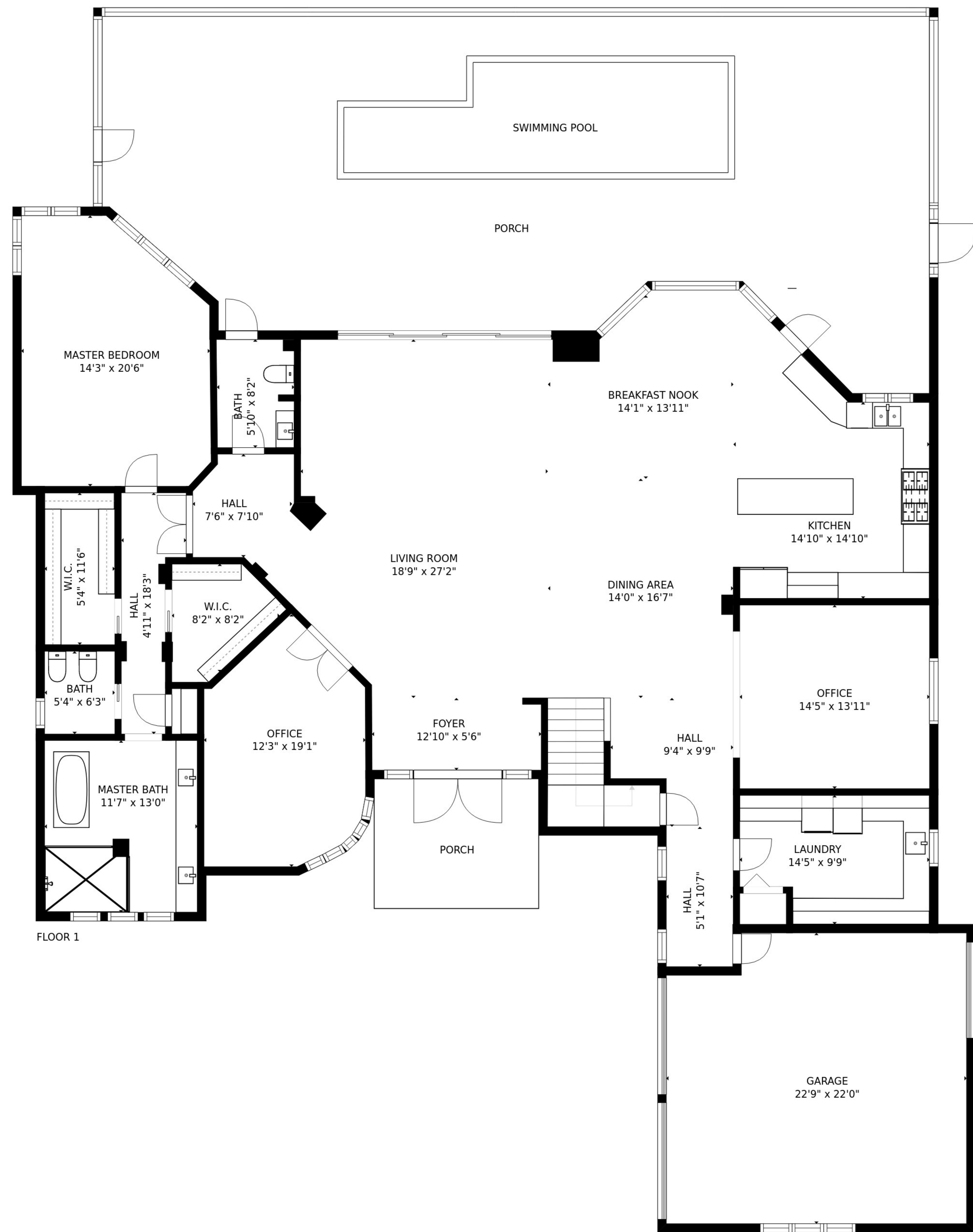
*Collier's Reserve*

Dimensions and specifications are subject to change without notice.

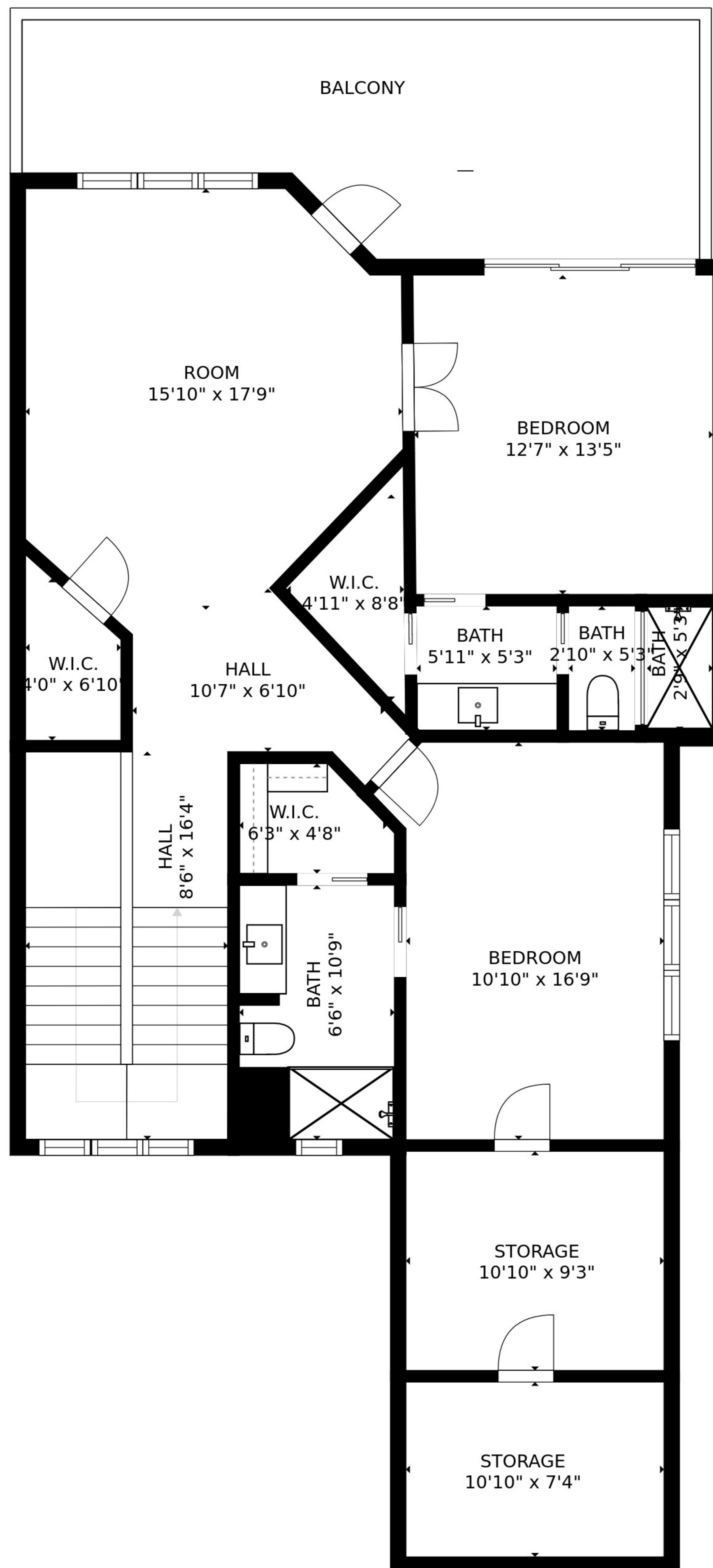
Offered exclusively by Collier's Reserve Realty, Inc. Co-Broker participation encouraged.  
Prices and availability are subject to change without notice. Rendering is an artist's conception.



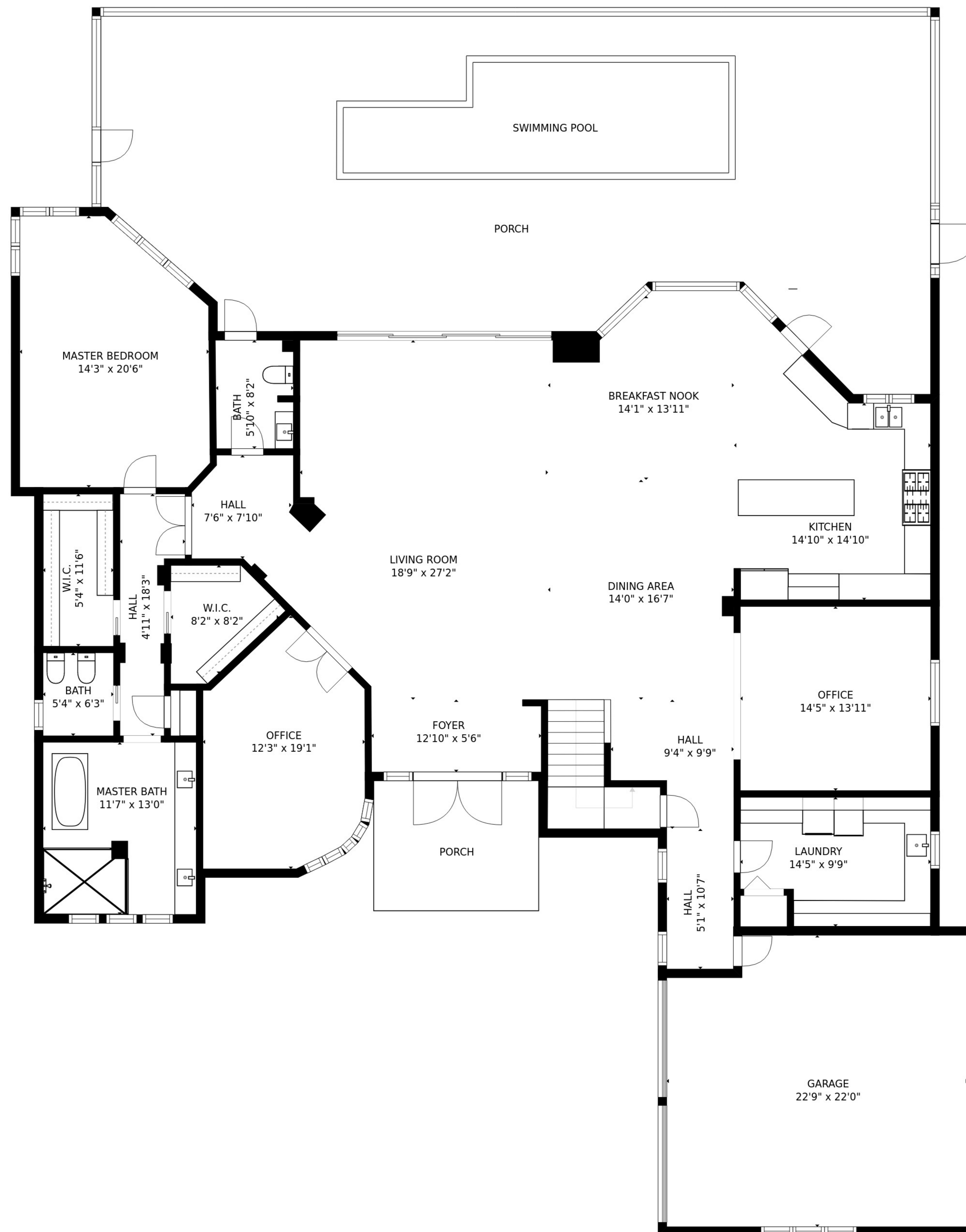




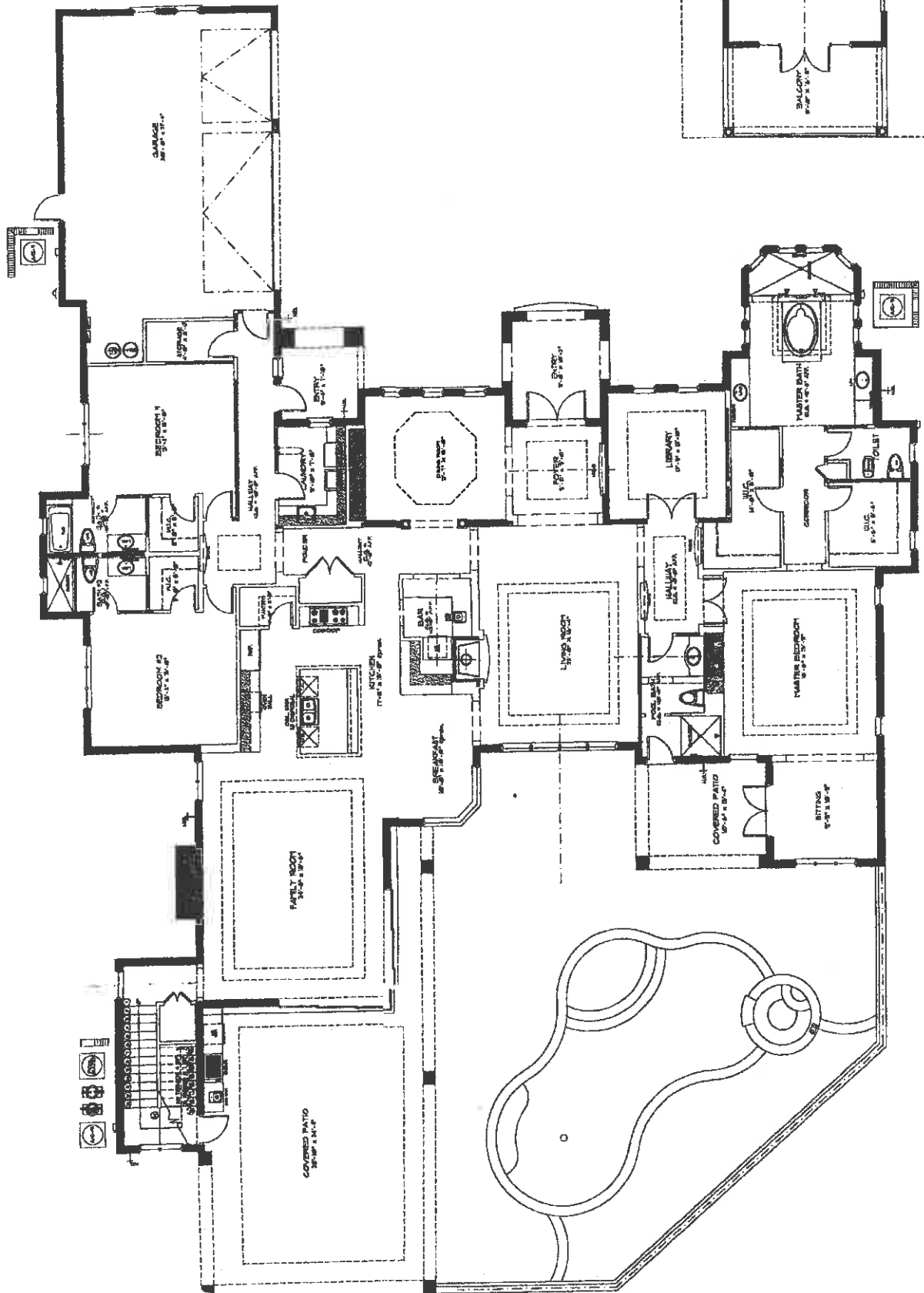
SIZES AND DIMENSIONS ARE APPROXIMATE, ACTUAL MAY VARY.



SIZES AND DIMENSIONS ARE APPROXIMATE, ACTUAL MAY VARY.



SIZES AND DIMENSIONS ARE APPROXIMATE, ACTUAL MAY VARY.

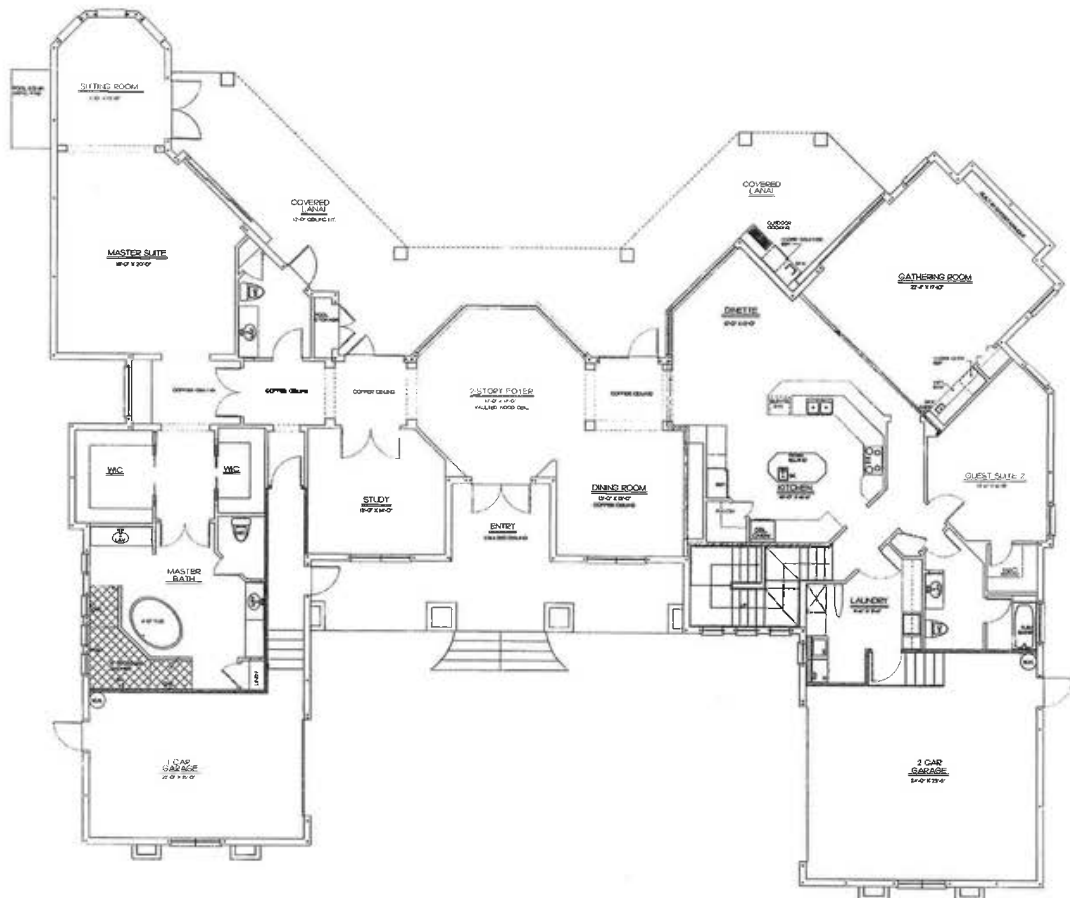


SECOND FLOOR PLAN

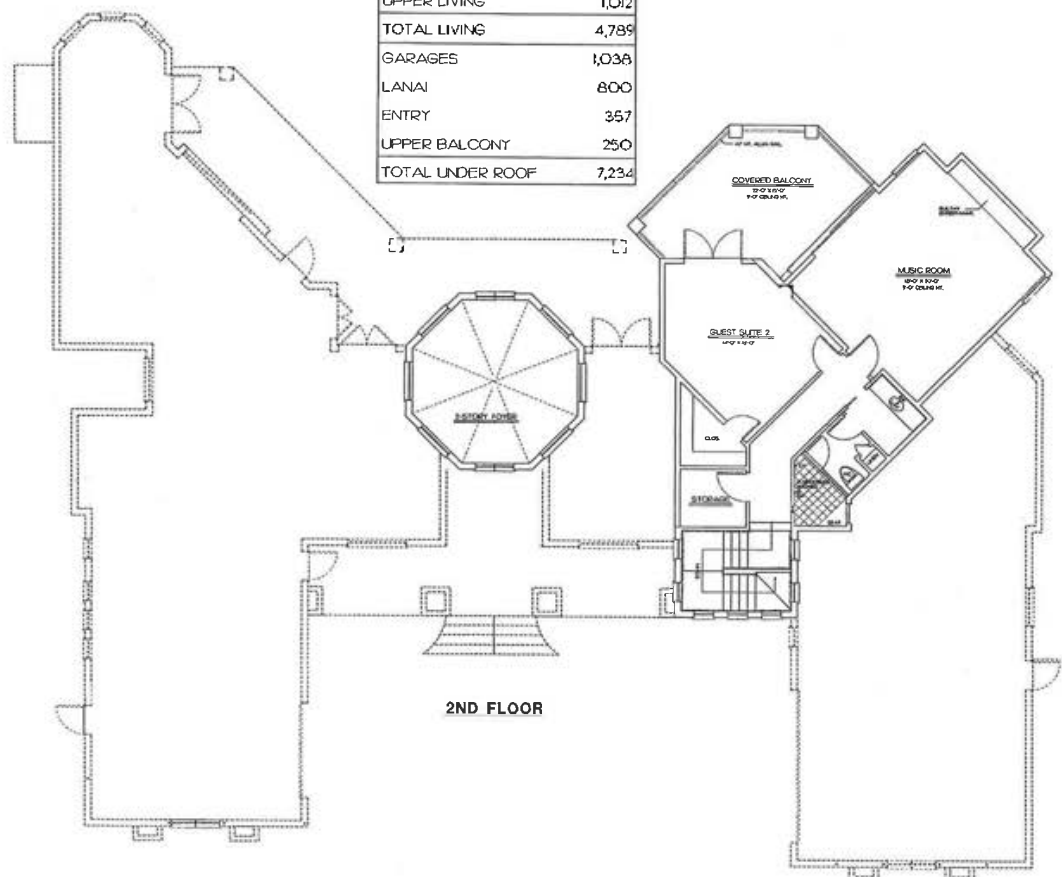
FIRST FLOOR PLAN

BUILDING AREAS	4,338 SF
FIRST FLOOR	400 SF
SECOND FLOOR	4,738 SF
TOTAL A/C	

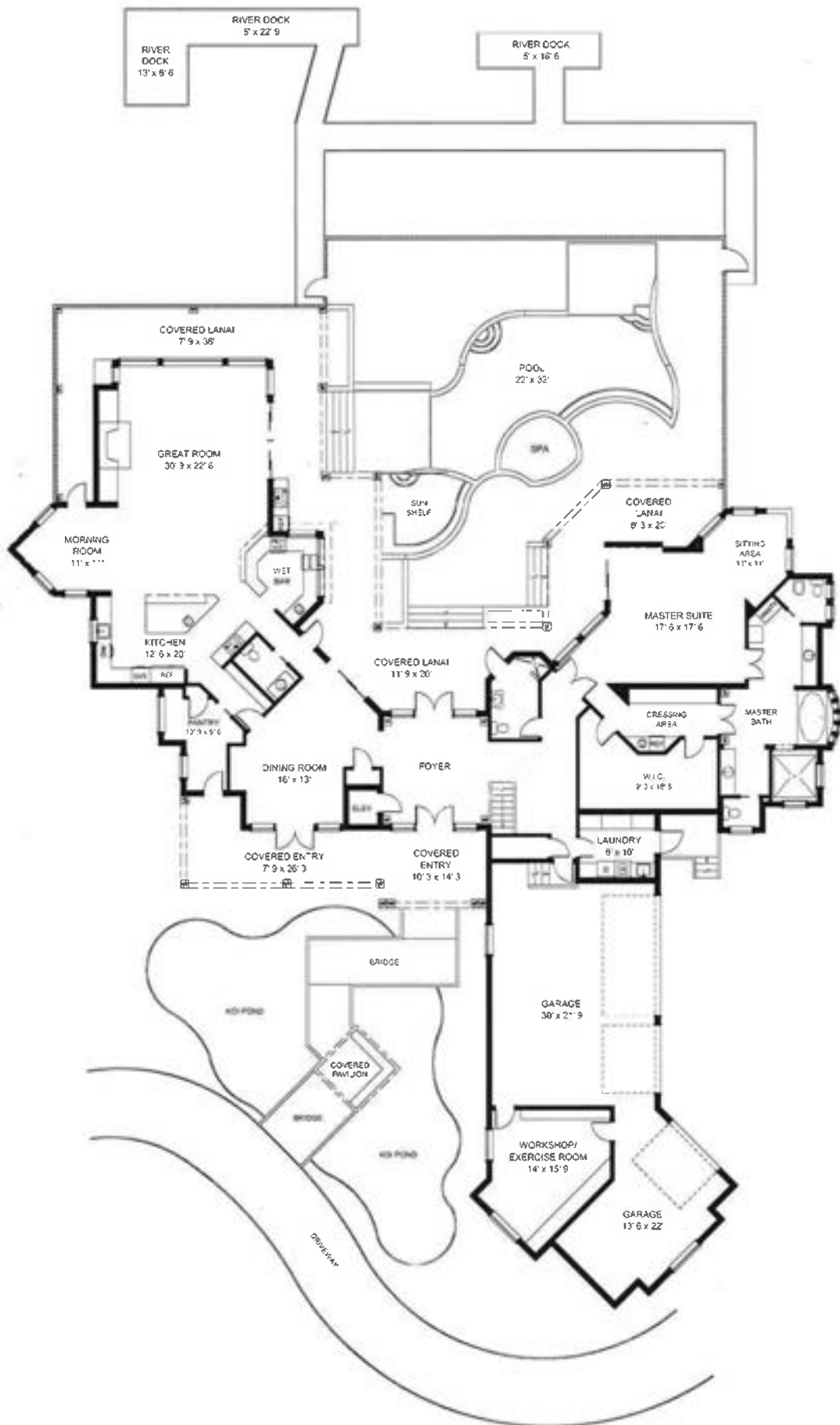


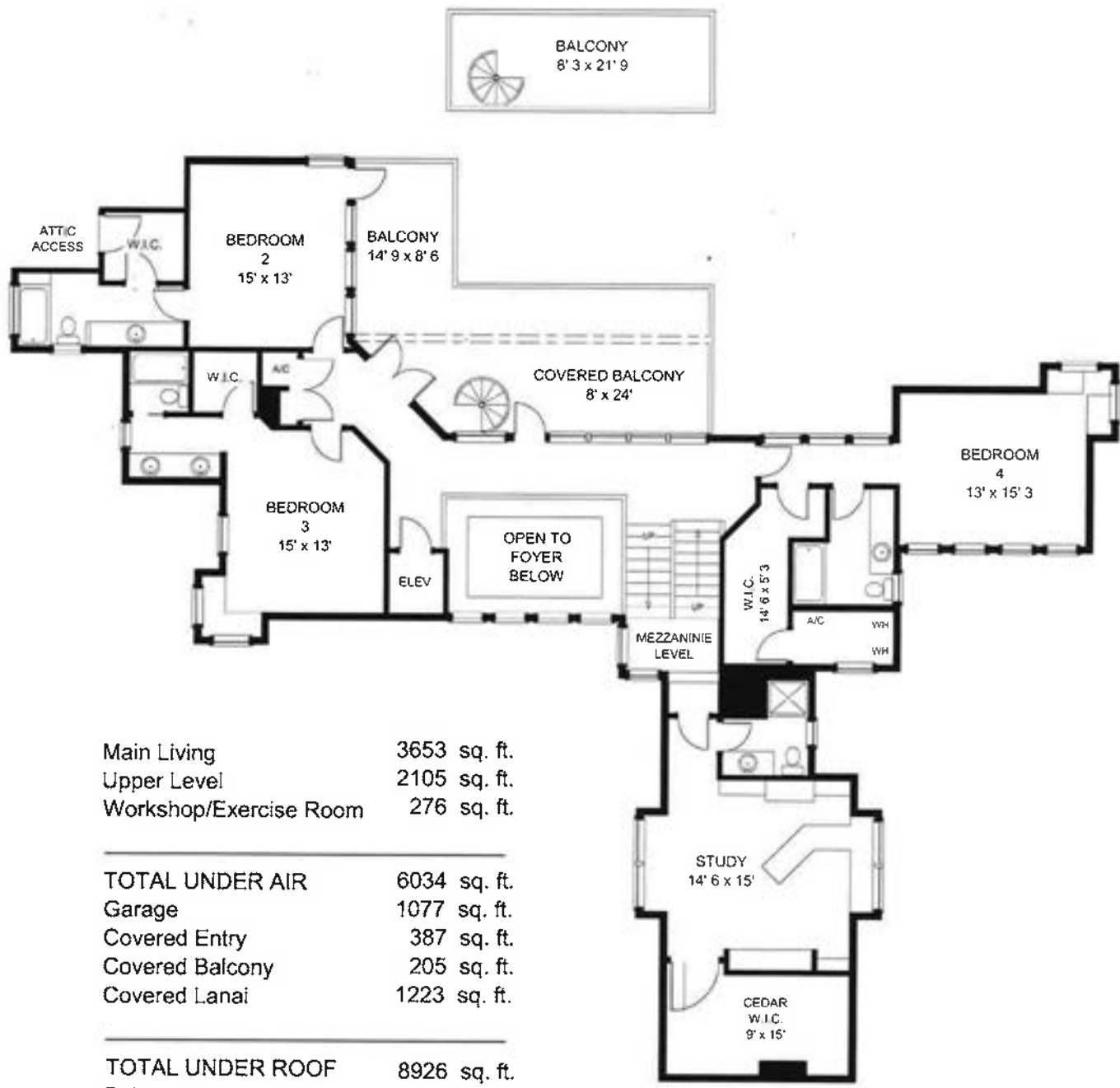


SQUARE FOOTAGE	
MAIN LIVING	3,777
UPPER LIVING	1,012
TOTAL LIVING	4,789
GARAGES	1,038
LANAI	800
ENTRY	357
UPPER BALCONY	250
TOTAL UNDER ROOF	7,234

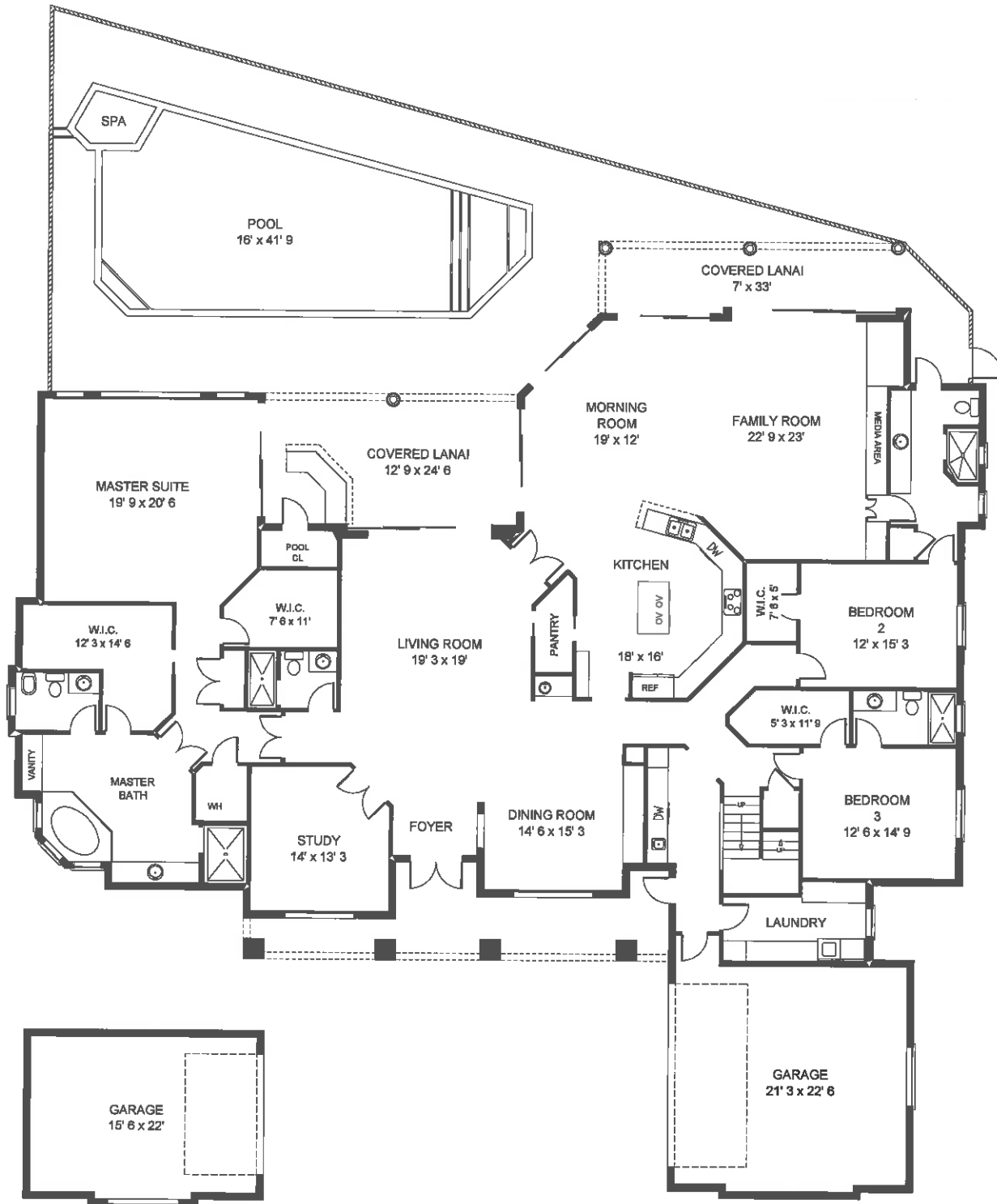


2ND FLOOR





Main Living	3653 sq. ft.
Upper Level	2105 sq. ft.
Workshop/Exercise Room	276 sq. ft.
<hr/>	
TOTAL UNDER AIR	6034 sq. ft.
Garage	1077 sq. ft.
Covered Entry	387 sq. ft.
Covered Balcony	205 sq. ft.
Covered Lanai	1223 sq. ft.
<hr/>	
TOTAL UNDER ROOF	8926 sq. ft.
Balcony	390 sq. ft.
Lanai/Pool	2163 sq. ft.
River Dock	306 sq. ft.
<hr/>	
TOTAL AREA	11785 sq. ft.



Main Living 4497 sq. ft.  
Upper Level 1560 sq. ft.

TOTAL UNDER AIR 6057 sq. ft.  
Garage 947 sq. ft.  
Covered Entry 259 sq. ft.  
Covered Lanai 603 sq. ft.

TOTAL UNDER ROOF 7866 sq. ft.  
Lanai/Pool 1712 sq. ft.

TOTAL AREA 9578 sq. ft.

